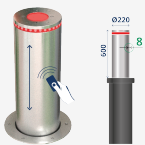


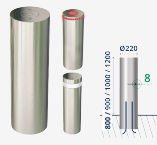
Installation with bollards from BENITO to control access to downtown Sant Antoni in Ibiza.



Automatic Telescopic Ø220 x 600 mm  
H6008



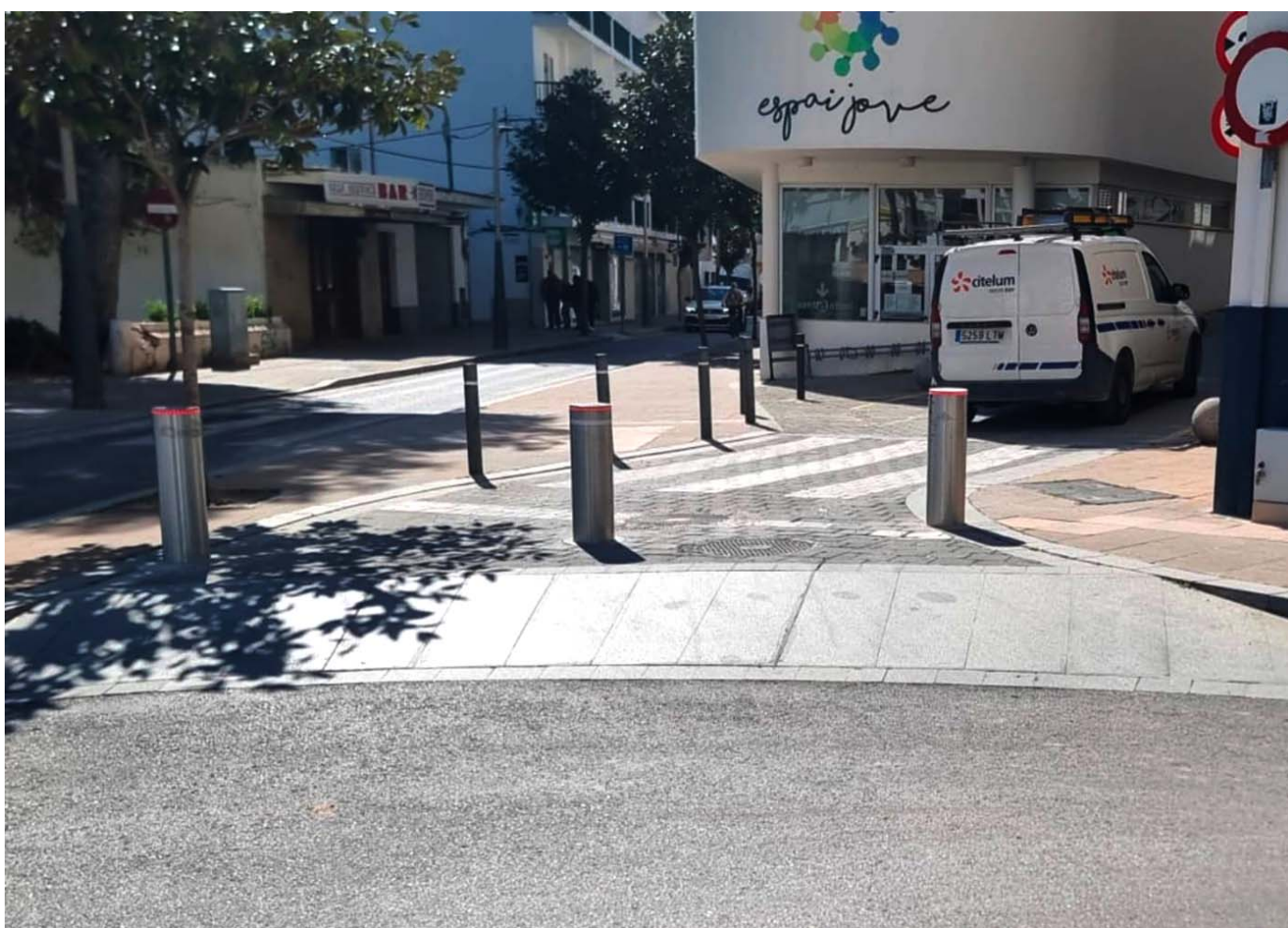
Embedded Fixed Ø220  
HE220



BENITO has installed 26 automatic bollards with LED lights to control access to the town of Sant Antoni, in Ibiza, and 24 fixed bollards. Specifically, the bollards with remote opening system have been installed in the streets Vara de Rey, Sant Antoni, Ample, Rossel, Ignasi Riquer, Santa Agnès, Bisbe Torres, Bisbe Cardona, the church square, and the Passeig de Ses Fonts. They open and close the passage with a remote opening system and at times defined by the municipality.

The automatic telescopic bollards are made of stainless steel and have signaling with a red and green LED ring to indicate if access is closed or open, respectively. The project aims to reduce vehicle traffic and improve air quality.

The constant improvement and evolution of our products may result in some modifications of the technical specifications and characteristics of the products without prior notice.



The constant improvement and evolution of our products may result in some modifications of the technical specifications and characteristics of the products without prior notice.