

Benito's Neovilla-Alu luminaires, suitable for both indoor and outdoor use, have been installed at the Tel Aviv-Hashalom station, one of the busiest in Israel.

---

**Tel Avivi-Hashalom (Israel)**

# BENITO

## -Street Lighting

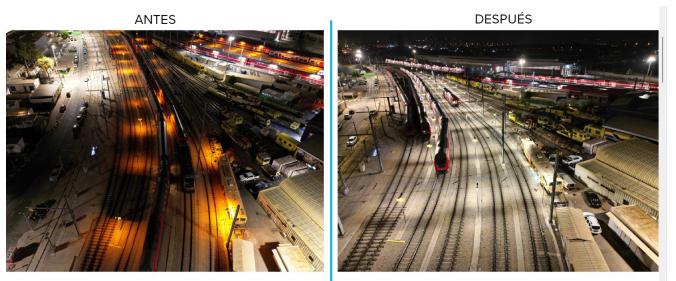
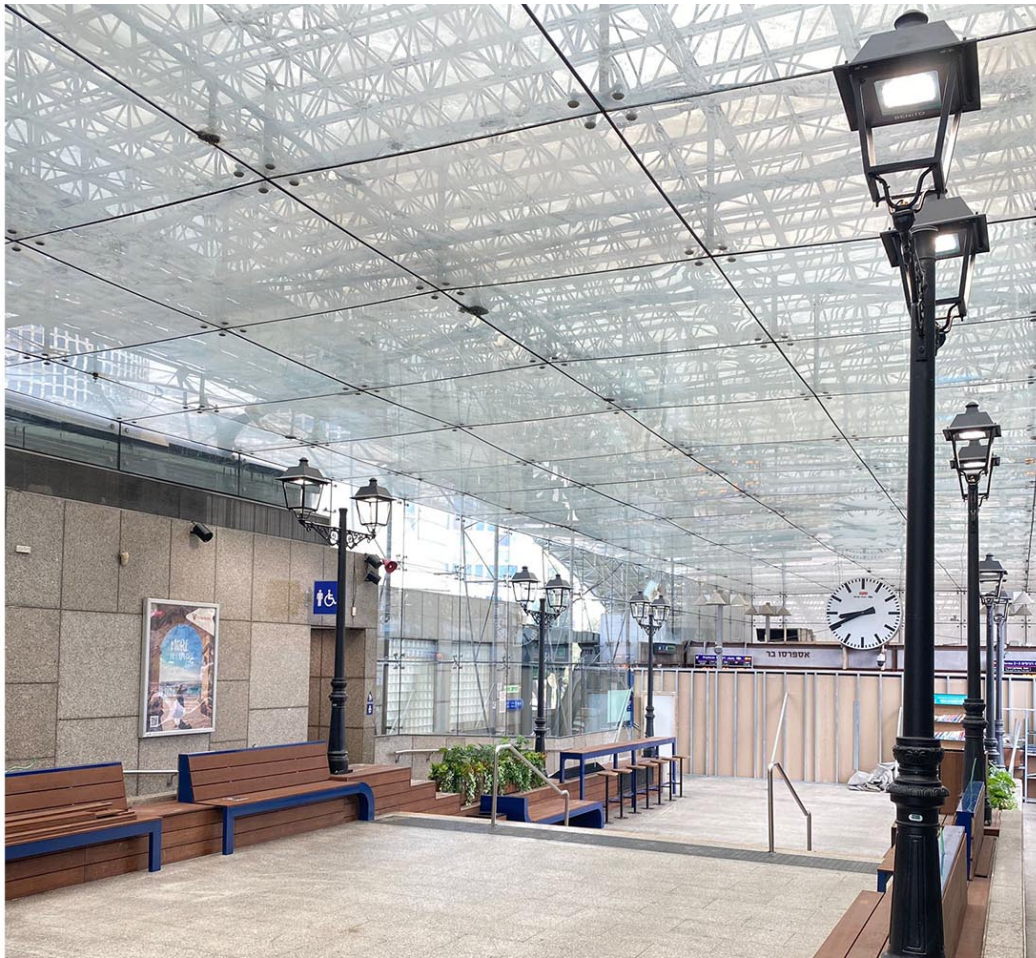
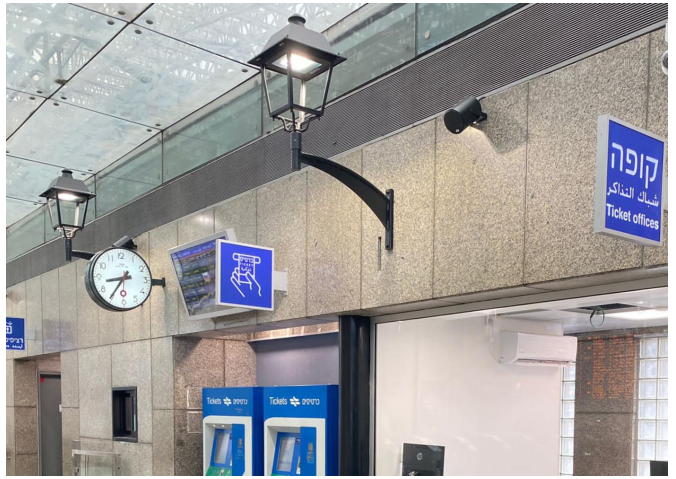
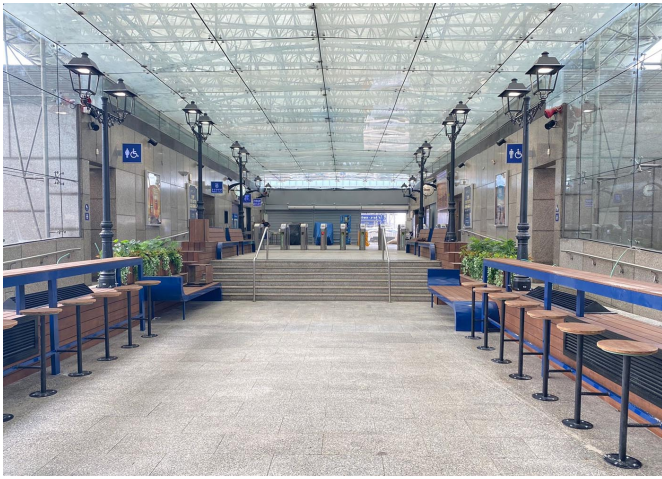
## Tel Avivi-Hashalom (Israel)

Benito's Neovilla-Alu luminaires, suitable for both indoor and outdoor use, have been installed at the Tel Aviv-Hashalom station, one of the busiest in Israel.



Israel is implementing an ambitious plan to replace all its lighting with LED technology in **62 train and metro stations across the country**, from north to south, with the aim of improving energy efficiency and safety. The selected models include **Neo-Villa, Citizen, and Elium luminaires**. This change covers both outdoor areas as well as the platforms and interiors of the stations, providing a white light that improves the perception of safety compared to the yellow light previously used (see before and after photo).

The photos show the interior of one of the **busiest stations in Tel-Aviv**, where the luminaires were integrated with the existing design and furniture. For the interior, **the Villa luminaires and Neo-Villa columns were chosen**, while in areas where columns could not be installed, **Camprodon arms were used**, achieving perfect integration without obstructing the passage.



V. | The constant improvement and evolution of our products may result in some modifications of the technical specifications and characteristics of the products without prior notice.