



New park in Playa Honda (Lanzarote) promoting active lifestyles, featuring sports areas, robinia playground equipment, a skate park, and bicycle racks, enhancing the use of public space.

---

**Lanzarote (Spain)**

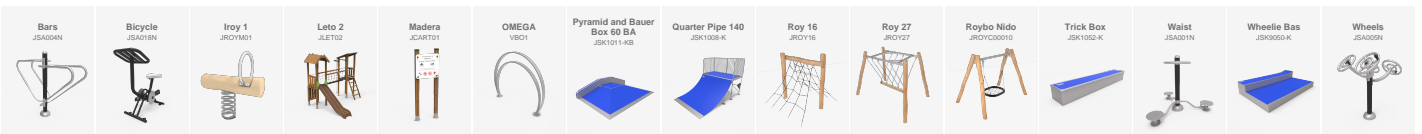


Benches, luminaires and bike racks to improve a park in France.

---

**Lavour (France)**

New park in Playa Honda (Lanzarote) promoting active lifestyles, featuring sports areas, robinia playground equipment, a skate park, and bicycle racks, enhancing the use of public space.



In the town of Playa Honda, **on the island of Lanzarote**, a new park has been inaugurated next to the airport, designed to enhance the use of public space and promote outdoor living.

**The project integrates different areas designed for all ages.** It includes **fitness-oriented elements** that encourage active lifestyles, **as well as children's play areas with robinia wood structures** that blend naturally into the surroundings. In addition, the **park features a LETO modular play unit**, expanding recreational opportunities for younger users.

The intervention is completed with a large skate park area, creating a dynamic meeting point for young people and sports users.

**All areas are equipped with OMEGA bike racks**, facilitating sustainable access and promoting cycling.

A project that combines sport, play and urban design to create a versatile, accessible space adapted to the needs of the community.



V. | The constant improvement and evolution of our products may result in some modifications of the technical specifications and characteristics of the products without prior notice.

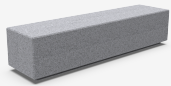
**BENITO**

info@benito.com  
tel. 93 852 1000

Benches, luminaires and bike racks to improve a park in France.



**Kube**  
UM372



**OMEGA**  
VB01



**SOL**  
VVP002



**Tomsk**  
ACTML+ALTM



Lavour is a town in the department of Tarn, in the Occitanie region of France. BENITO has installed a pack of urban furniture in a park that includes benches from the Kube range and Omega bicycle racks protected by bollards and the Sol fence. The Kube bench is made of concrete, a solution for areas with extreme temperatures, a characteristic that the green-painted steel bicycle rack also has. It has been complemented by the modern Tomsk luminaires, which stand out for their robustness and durability.

The entire set gives an image of solidity with a sober aesthetic that adapts to the town, known for its Saint-Alain cathedral.



V. | The constant improvement and evolution of our products may result in some modifications of the technical specifications and characteristics of the products without prior notice.

**BENITO**

info@benito.com  
tel. 93 852 1000