



The new furnishings at the Parque Ecológico Lago de Texcoco include Kube chairs and bins, Petrus loungers and Lisa concrete planters, along with Stark luminaires and Benito sports courts.

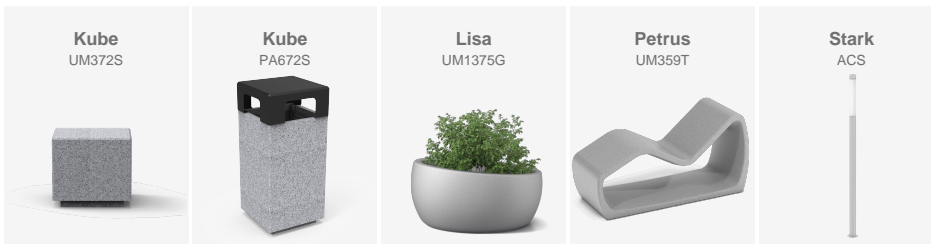
Ciudad de México (Mexico)

BENITO

-Site Furnishing

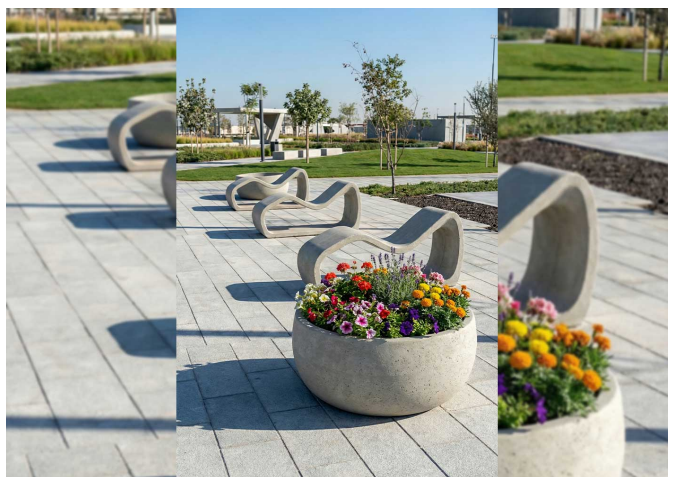
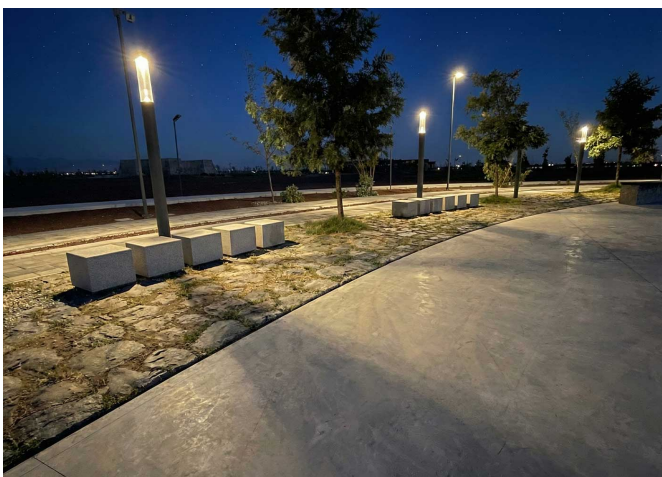
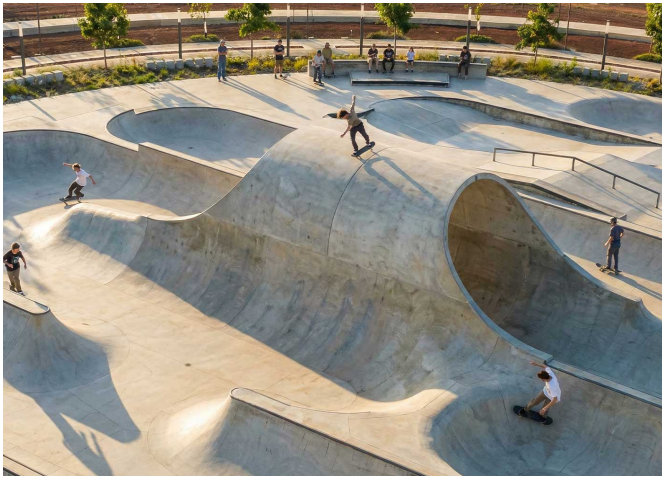
Ciudad de México (Mexico)

The new furnishings at the Parque Ecológico Lago de Texcoco include Kube chairs and bins, Petrus loungers and Lisa concrete planters, along with Stark luminaires and Benito sports courts.



In Ecatepec de Morelos, very close to Mexico City, the **Parque Ecológico Lago de Texcoco** has been developed as one of the country's largest environmental, recreational and sports projects. **Designed to restore the former lacustrine environment and transform it into a green space accessible to millions of people**, the park integrates a wide network of facilities: **football and American-football fields, baseball fields and batting cages, multi-use courts, a skatepark, parkour circuits, a labyrinth, picnic areas, a bicycle-rental station, outdoor gyms and multiple rest and social spaces.**

Benito Urban has contributed to the equipment of this landmark project by installing **Kube chairs and bins, Petrus loungers and Lisa planters, all made of concrete**, a material that ensures high resistance and maximum durability in an intensive-use environment. Additionally, **Benito sports courts and Stark luminaires** have been incorporated, strengthening the park's activity offering and providing lighting suited to its needs. Thanks to these actions, the Parque Ecológico Lago de Texcoco is consolidated as a modern, ecological and fully equipped public space for sports, recreation and social integration.



BENITO

info@benito.com
tel. 93 852 1000