

# BENITO

-Street Lighting



## Project

PROJ-045-2022

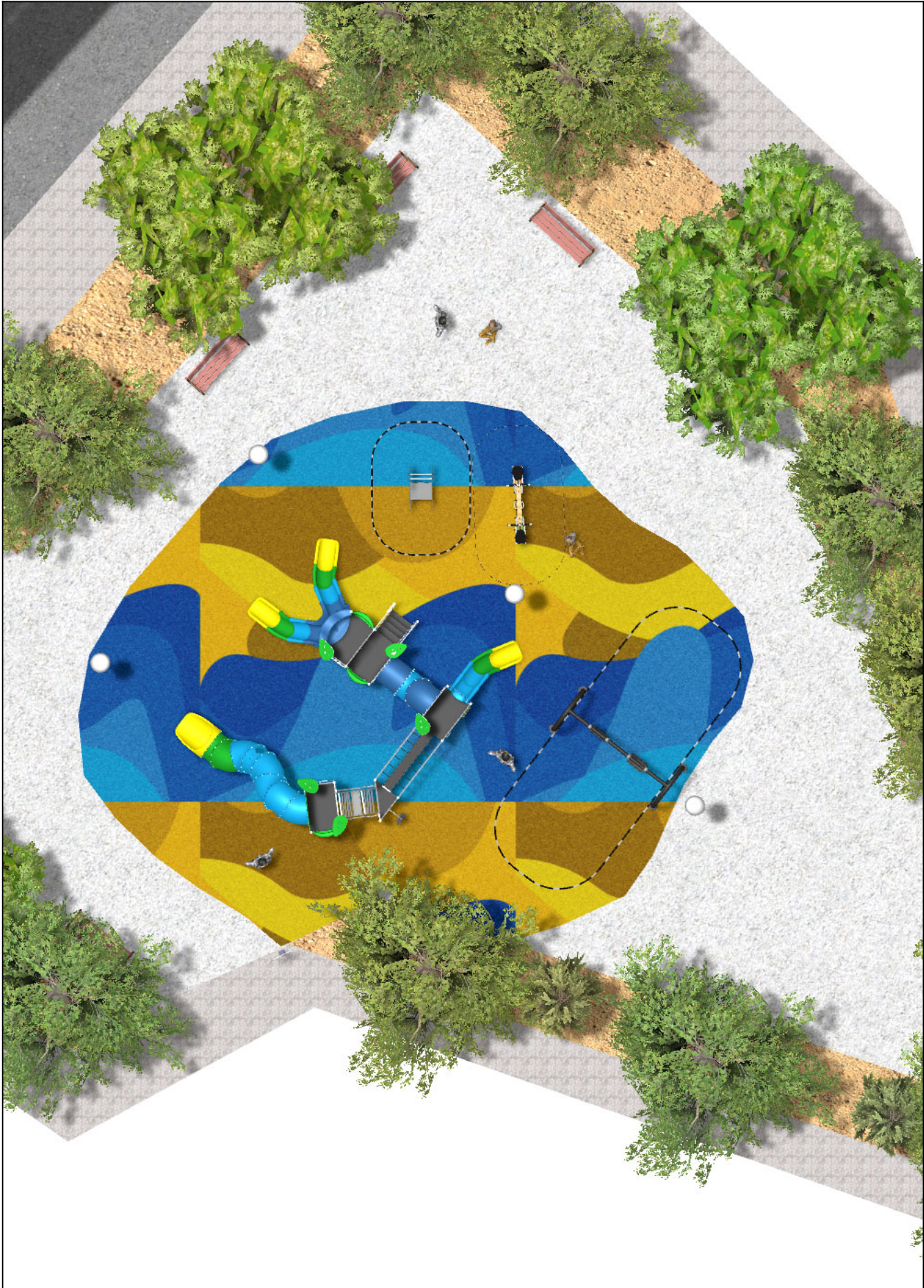
Surface: 160 m<sup>2</sup>

Email: [info@benito.com](mailto:info@benito.com)

Telephone: +34 93 852 1000

# BENITO

-Street Lighting



# BENITO








-Street Lighting



# BENITO

-Street Lighting



Product	Description
<p data-bbox="188 159 248 185">ILCZ</p> 	<p data-bbox="365 159 515 185"><b>Citizen Clear</b></p> <p data-bbox="365 190 1505 275">Decorative or functional luminaire ideal for residential areas (green spaces, pedestrian areas, parks...). Extensive optical and light distributions, glare control and cut-off suitable for pedestrians. Excellent relation between efficiency and cost.</p> <p data-bbox="365 304 549 331"><a href="#">Data Sheet ILCZ</a></p>
<p data-bbox="172 427 264 454">JALU06</p> 	<p data-bbox="365 427 432 454"><b>Alu 6</b></p> <p data-bbox="365 459 1505 544">The ALU collection <b>maximises playability</b>. Including lots of slides, bridges and dynamic elements, the ALU line encourages children to play, even those with disabilities. Its bright colours don't go unnoticed and the quality of materials guarantee high durability.</p> <p data-bbox="365 573 1062 600"><a href="#">Data Sheet JALU06</a> <a href="#">Certificate Conformity</a> <a href="#">Acreditative Letter</a></p>
<p data-bbox="164 696 272 723">JCART02</p> 	<p data-bbox="365 696 432 723"><b>Metal</b></p> <p data-bbox="365 728 898 754"><b>Structure, Metal:</b> Zinc-plated and lacquered iron.</p> <p data-bbox="365 784 603 810"><a href="#">Data Sheet JCART02</a></p>
<p data-bbox="180 965 256 992">JFS10</p> 	<p data-bbox="365 965 432 992"><b>Rider</b></p> <p data-bbox="365 996 1473 1023">Fun and educative see-saw for children. Made of resistant materials according to the EN1176 standard.</p> <p data-bbox="365 1052 884 1079"><a href="#">Data Sheet</a> <a href="#">Certificate</a> <a href="#">Certificate Conformity</a></p>
<p data-bbox="172 1234 264 1261">JJMM03</p> 	<p data-bbox="365 1234 442 1261"><b>Julián</b></p> <p data-bbox="365 1265 1473 1319">Designed by <b>Javier Mariscal</b>. Half-artist half-designer, his childlike strokes and Latin aesthetic combine perfectly with this kind of product.</p> <p data-bbox="365 1348 983 1375"><a href="#">Data Sheet JJMM03</a> <a href="#">Certificate</a> <a href="#">Certificate Conformity</a></p>
<p data-bbox="156 1503 280 1529">JKSP11000</p> 	<p data-bbox="365 1503 512 1529"><b>Curvo Mixto</b></p> <p data-bbox="365 1534 1473 1588">Swings for children made of different materials such as wood and steel. Resistant to abrasion, corrosion and bad weather conditions.</p> <p data-bbox="365 1617 884 1644"><a href="#">Data Sheet</a> <a href="#">Certificate</a> <a href="#">Certificate Conformity</a></p>
<p data-bbox="180 1771 256 1798">UM301</p> 	<p data-bbox="365 1771 448 1798"><b>Citizen</b></p> <p data-bbox="365 1803 1505 1964">Exclusive CITIZEN design Bench , total dimensions (length x height x depth) 1800x820x650 mm, manufactured with ductile iron legs (treated with the Ferrus process, the triple-layer protector for iron, which guarantees optimal corrosion resistance). Epoxy primer finish and Marson-colored polyester powder paint. Five tropical wood planks (treated with a triple-layer Lignus coating, a fungicidal, insecticidal and water-repellent protector) in a natural finish. Stainless steel hardware. Recommended anchoring: four M10 expansion bolts depending on the surface and project.</p> <p data-bbox="365 1968 667 1995">Optional items not included:</p> <p data-bbox="365 2000 1118 2027">Customizable marking with 74x35 mm aluminum plate or milled board.</p> <p data-bbox="365 2056 1023 2083"><a href="#">Data Sheet UM301</a> <a href="#">Data Sheet</a> <a href="#">Certificate TMA/851/2021</a></p>