

BENITO

–Playground Equipment



Project

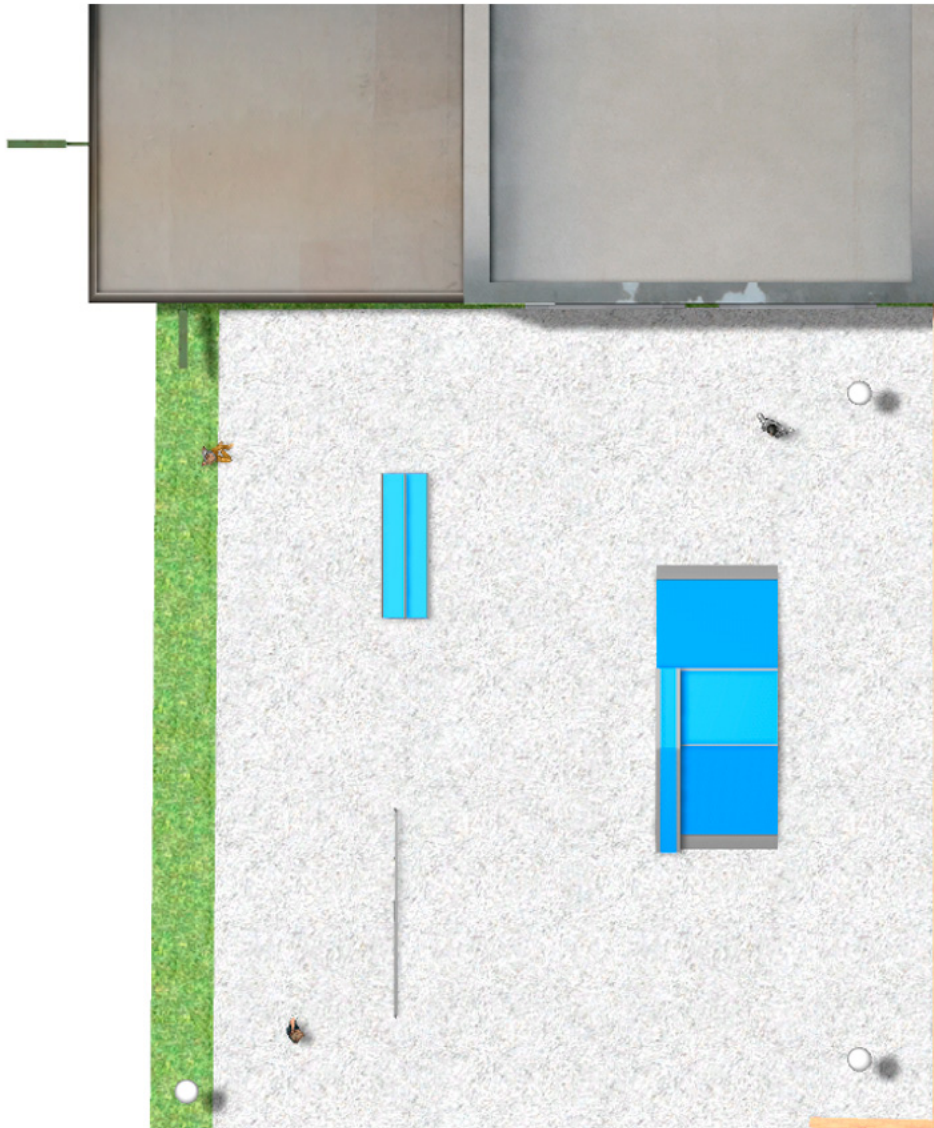
PROJ-047-2018

Surface: 250 m²

Email: info@benito.com

Telephone: +34 93 852 1000

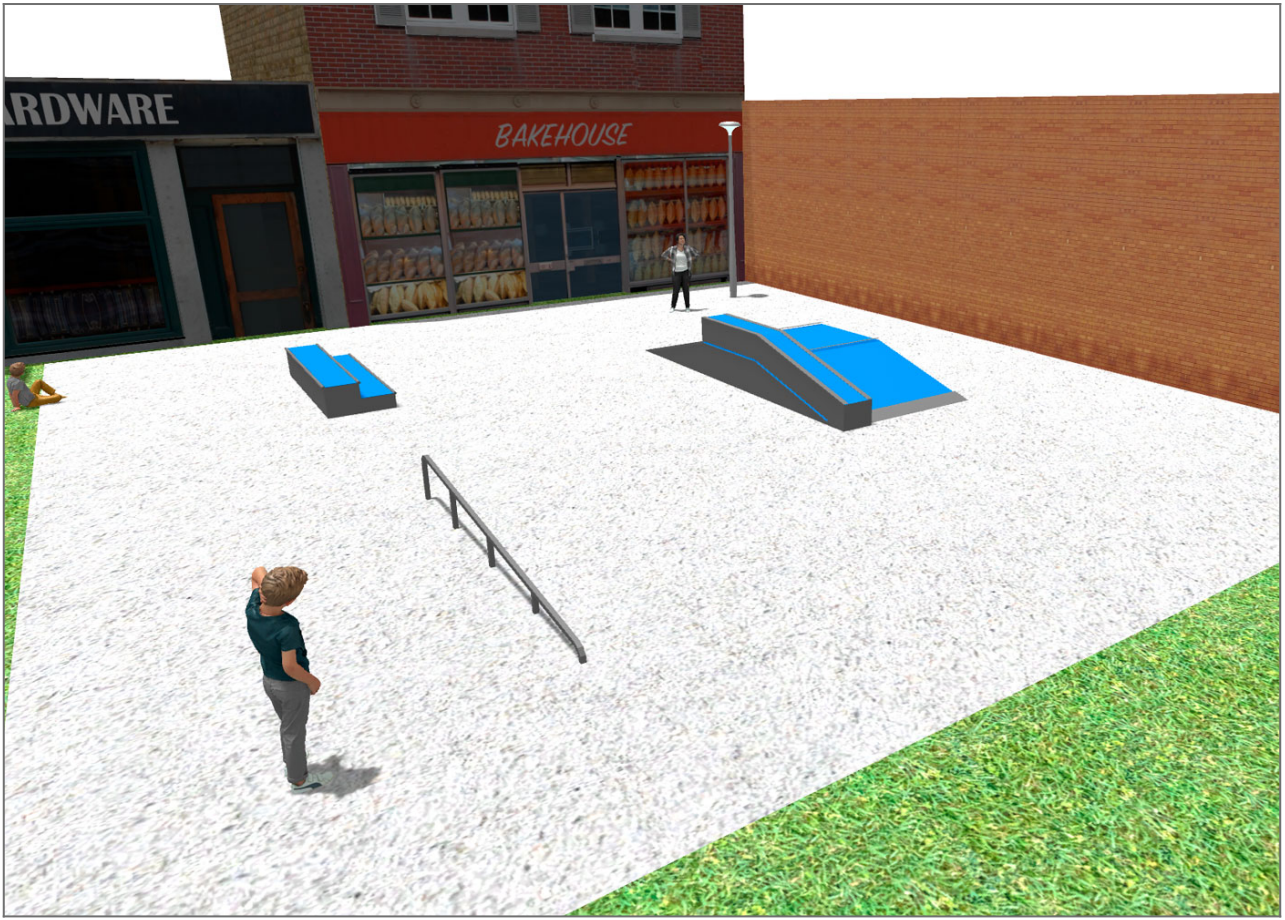
BENITO
-Playground Equipment






BENITO
-Playground Equipment



BENITO
-Playground Equipment



Product	Description
JSK9025-KBS 	<p>One side Curb Box 60</p> <p>The Skates elements are of modular construction that allows with the minimum effort the ability to modify the situation of the modules according to the criteria of each group of skaters. with minimum maintenance and 100% resistant to UVA rays, ice and impacts. Great adherence to the ground. The surface is not heated. Based on modular construction.</p> <p>Data Sheet Certificate</p>
JSK1052-K 	<p>Trick Box</p> <p>The Skates elements are of modular construction that allows with the minimum effort the ability to modify the situation of the modules according to the criteria of each group of skaters. with minimum maintenance and 100% resistant to UVA rays, ice and impacts. Great adherence to the ground. The surface is not heated. Based on modular construction.</p> <p>Data Sheet Certificate</p>
JSK1048-C 	<p>Rail C</p> <p>The Skates elements are of modular construction that allows with the minimum effort the ability to modify the situation of the modules according to the criteria of each group of skaters. with minimum maintenance and 100% resistant to UVA rays, ice and impacts. Great adherence to the ground. The surface is not heated. Based on modular construction.</p> <p>Data Sheet Certificate</p>