

# BENITO

-Street Lighting



## Project

PROJ-045-2022

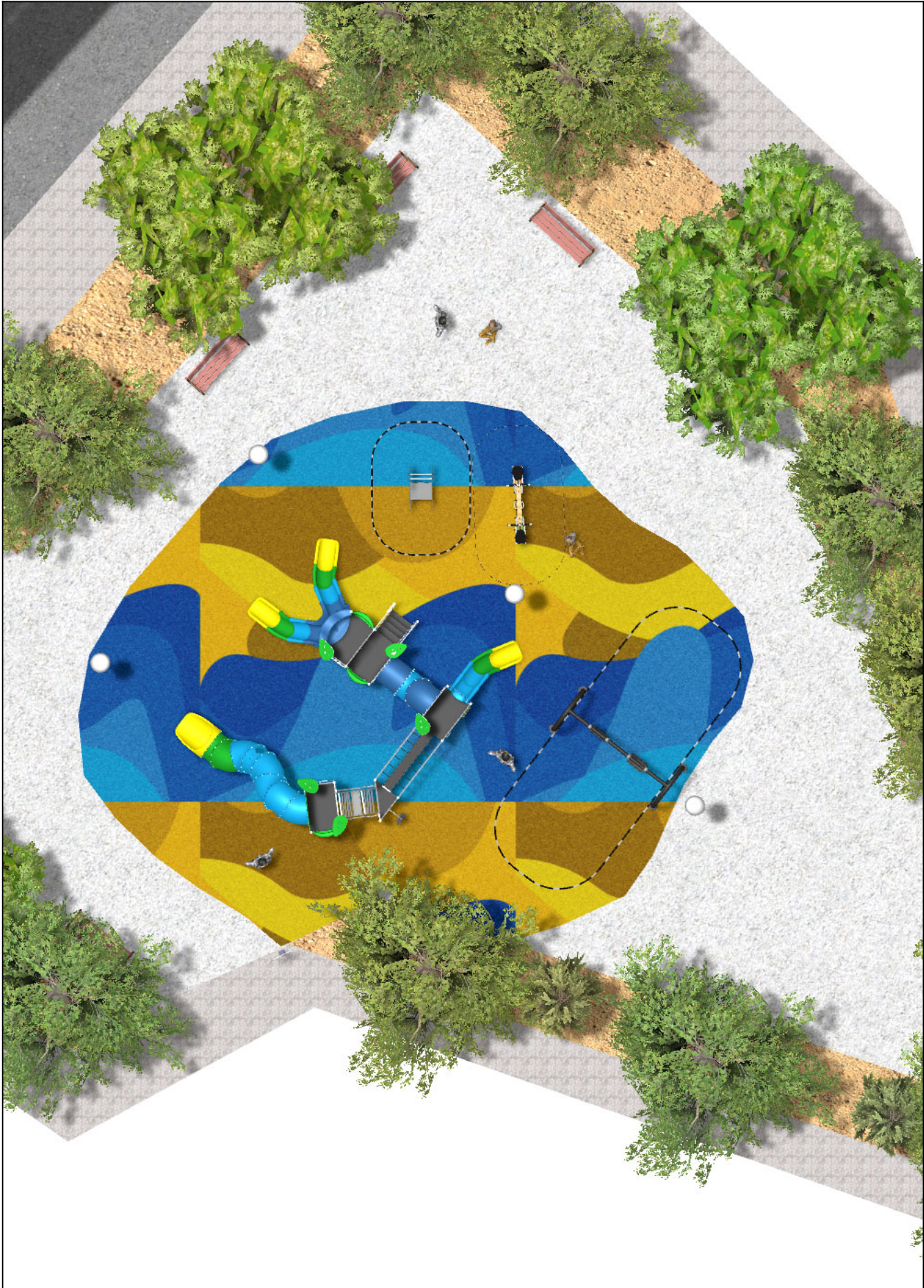
Surface: 160 m<sup>2</sup>

Email: [info@benito.com](mailto:info@benito.com)

Telephone: +34 93 852 1000

# BENITO

-Street Lighting



# BENITO








-Street Lighting



# BENITO

-Street Lighting



Product	Description
<p data-bbox="188 159 248 185">ILCZ</p> 	<p data-bbox="365 159 517 185"><b>Citizen Clear</b></p> <p data-bbox="365 188 1505 275">Decorative or functional luminaire ideal for residential areas (green spaces, pedestrian areas, parks...). Extensive optical and light distributions, glare control and cut-off suitable for pedestrians. Excellent relation between efficiency and cost.</p> <p data-bbox="365 304 549 331"><a href="#">Data Sheet ILCZ</a></p>
<p data-bbox="172 427 264 454">JALU06</p> 	<p data-bbox="365 427 432 454"><b>Alu 6</b></p> <p data-bbox="365 456 1505 544">The ALU collection <b>maximises playability</b>. Including lots of slides, bridges and dynamic elements, the ALU line encourages children to play, even those with disabilities. Its bright colours don't go unnoticed and the quality of materials guarantee high durability.</p> <p data-bbox="365 573 1062 600"><a href="#">Data Sheet JALU06</a> <a href="#">Certificate Conformity</a> <a href="#">Acreditative Letter</a></p>
<p data-bbox="164 696 272 723">JCART02</p> 	<p data-bbox="365 696 432 723"><b>Metal</b></p> <p data-bbox="365 725 898 752"><b>Structure, Metal:</b> Zinc-plated and lacquered iron.</p> <p data-bbox="365 781 603 808"><a href="#">Data Sheet JCART02</a></p>
<p data-bbox="180 965 256 992">JFS10</p> 	<p data-bbox="365 965 432 992"><b>Rider</b></p> <p data-bbox="365 994 1473 1021">Fun and educative see-saw for children. Made of resistant materials according to the EN1176 standard.</p> <p data-bbox="365 1050 884 1077"><a href="#">Data Sheet</a> <a href="#">Certificate</a> <a href="#">Certificate Conformity</a></p>
<p data-bbox="172 1234 264 1261">JJMM03</p> 	<p data-bbox="365 1234 440 1261"><b>Julián</b></p> <p data-bbox="365 1263 1473 1317">Designed by <b>Javier Mariscal</b>. Half-artist half-designer, his childlike strokes and Latin aesthetic combine perfectly with this kind of product.</p> <p data-bbox="365 1346 884 1373"><a href="#">Data Sheet</a> <a href="#">Certificate</a> <a href="#">Certificate Conformity</a></p>
<p data-bbox="156 1503 280 1529">JKSP11000</p> 	<p data-bbox="365 1503 512 1529"><b>Curvo Mixto</b></p> <p data-bbox="365 1532 1473 1585">Swings for children made of different materials such as wood and steel. Resistant to abrasion, corrosion and bad weather conditions.</p> <p data-bbox="365 1615 884 1641"><a href="#">Data Sheet</a> <a href="#">Certificate</a> <a href="#">Certificate Conformity</a></p>
<p data-bbox="180 1771 256 1798">UM301</p> 	<p data-bbox="365 1771 448 1798"><b>Citizen</b></p> <p data-bbox="365 1800 1505 1966">Exclusive CITIZEN design Bench , total dimensions (length x height x depth) 1800x820x650 mm, manufactured with ductile iron legs (treated with the Ferrus process, the triple-layer protector for iron, which guarantees optimal corrosion resistance). Epoxy primer finish and Marson-colored polyester powder paint. Five tropical wood planks (treated with a triple-layer Lignus coating, a fungicidal, insecticidal and water-repellent protector) in a natural finish. Stainless steel hardware. Recommended anchoring: four M10 expansion bolts depending on the surface and project.</p> <p data-bbox="365 1968 667 1995">Optional items not included:</p> <p data-bbox="365 1998 1118 2024">Customizable marking with 74x35 mm aluminum plate or milled board.</p> <p data-bbox="365 2054 1023 2080"><a href="#">Data Sheet UM301</a> <a href="#">Data Sheet</a> <a href="#">Certificate TMA/851/2021</a></p>