

BENITO

-Street Lighting



Project

PROJ-045-2022

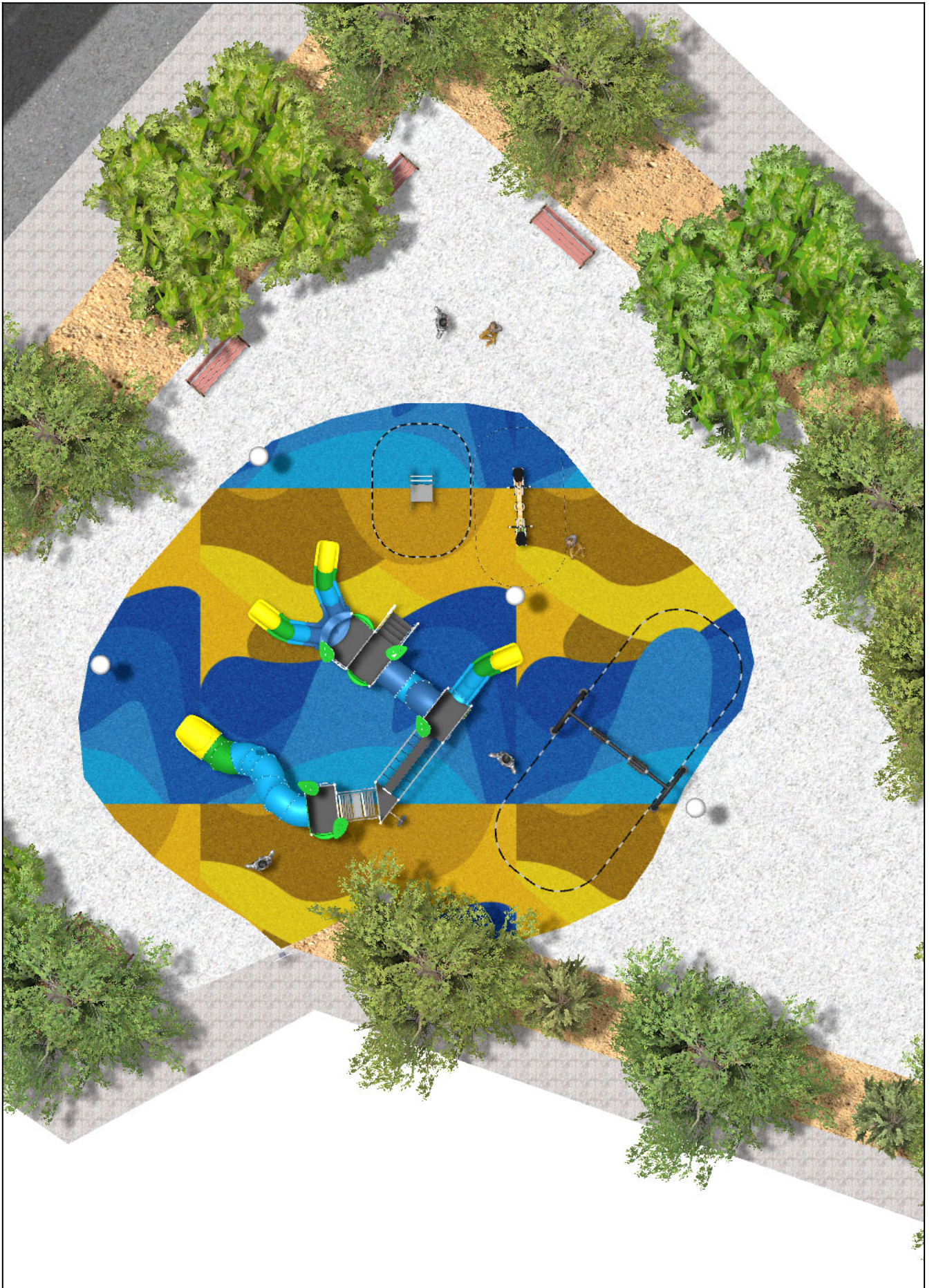
Surface: 160 m²

Email: info@benito.com

Telephone: +34 93 852 1000

BENITO

-Street Lighting



BENITO








-Street Lighting



BENITO

-Street Lighting



Product	Description
<p data-bbox="188 159 248 185">ILCZ</p> 	<p data-bbox="368 159 517 185">Citizen Clear</p> <p data-bbox="368 190 1501 275">Decorative or functional luminaire ideal for residential areas (green spaces, pedestrian areas, parks...). Extensive optical and light distributions, glare control and cut-off suitable for pedestrians. Excellent relation between efficiency and cost.</p> <p data-bbox="368 304 549 331">Data Sheet ILCZ</p>
<p data-bbox="172 427 264 454">JALU06</p> 	<p data-bbox="368 427 432 454">Alu 6</p> <p data-bbox="368 459 1501 544">The ALU collection maximises playability. Including lots of slides, bridges and dynamic elements, the ALU line encourages children to play, even those with disabilities. Its bright colours don't go unnoticed and the quality of materials guarantee high durability.</p> <p data-bbox="368 573 1062 600">Data Sheet JALU06 Certificate Conformity Acreditative Letter</p>
<p data-bbox="164 696 272 723">JCART02</p> 	<p data-bbox="368 696 432 723">Metal</p> <p data-bbox="368 728 898 754">Structure, Metal: Zinc-plated and lacquered iron.</p> <p data-bbox="368 784 603 810">Data Sheet JCART02</p>
<p data-bbox="180 965 256 992">JFS10</p> 	<p data-bbox="368 965 432 992">Rider</p> <p data-bbox="368 996 1469 1023">Fun and educative see-saw for children. Made of resistant materials according to the EN1176 standard.</p> <p data-bbox="368 1052 884 1079">Data Sheet Certificate Certificate Conformity</p>
<p data-bbox="172 1234 264 1261">JJMM03</p> 	<p data-bbox="368 1234 440 1261">Julián</p> <p data-bbox="368 1265 1469 1319">Designed by Javier Mariscal. Half-artist half-designer, his childlike strokes and Latin aesthetic combine perfectly with this kind of product.</p> <p data-bbox="368 1348 884 1375">Data Sheet Certificate Certificate Conformity</p>
<p data-bbox="156 1503 280 1529">JKSP11000</p> 	<p data-bbox="368 1503 507 1529">Curvo Mixto</p> <p data-bbox="368 1534 1469 1588">Swings for children made of different materials such as wood and steel. Resistant to abrasion, corrosion and bad weather conditions.</p> <p data-bbox="368 1617 884 1644">Data Sheet Certificate Certificate Conformity</p>
<p data-bbox="180 1771 256 1798">UM301</p> 	<p data-bbox="368 1771 448 1798">Citizen</p> <p data-bbox="368 1803 1501 1964">Exclusive CITIZEN design Bench , total dimensions (length x height x depth) 1800x820x650 mm, manufactured with ductile iron legs (treated with the Ferrus process, the triple-layer protector for iron, which guarantees optimal corrosion resistance). Epoxy primer finish and Marson-colored polyester powder paint. Five tropical wood planks (treated with a triple-layer Lignus coating, a fungicidal, insecticidal and water-repellent protector) in a natural finish. Stainless steel hardware. Recommended anchoring: four M10 expansion bolts depending on the surface and project.</p> <p data-bbox="368 1968 667 1995">Optional items not included:</p> <p data-bbox="368 2000 1118 2027">Customizable marking with 74x35 mm aluminum plate or milled board.</p> <p data-bbox="368 2056 1023 2083">Data Sheet UM301 Data Sheet Certificate TMA/851/2021</p>