



Installation of Apolo XL projectors in Nouvelle Aquitaine, thus improving the local sports area with advanced technology that guarantees a high-quality visual experience.

Nouvelle Aquitaine (France)



The 1st Division Football Field in Herzliya, Israel, equipped with 1500W Apolo XL projectors, arranged in columns of 28 units each, meets the demanding lighting standards set by FIFA.

Israel



Illumination of the UE Rubi field for the Copa del Rey competition.

Barcelona

BENITO

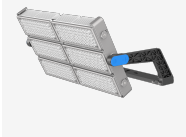
-Street Lighting

Nouvelle Aquitaine (France)

Installation of Apolo XL projectors in Nouvelle Aquitaine, thus improving the local sports area with advanced technology that guarantees a high-quality visual experience.



Apolo XL
APALXL



In the town of Saint-Junien, in Nouvelle-Aquitaine, an innovative upgrade has been made to the sports infrastructure with the installation of **Apolo XL projectors** in five fields: football athletics, rugby, synthetic football, training, and annex. These advanced projectors not only offer exceptional visual quality but also feature an Onfield control system, which allows for managing the lights and adjusting the power from a mobile device.

This functionality facilitates turning the lights on and off and enables adjusting the lighting according to the needs of the event or the conditions of the field. The incorporation of this modern technology not only enhances the visual experience for spectators and athletes but also provides great flexibility and convenience in managing the sports facilities.

BENITO

info@benito.com
tel. 93 852 1000



BENITO

info@benito.com
tel. 93 852 1000

V. | The constant improvement and evolution of our products may result in some modifications of the technical specifications and characteristics of the products without prior notice.

BENITO

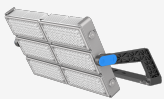
-Street Lighting

Israel

The 1st Division Football Field in Herzliya, Israel, equipped with 1500W Apolo XL projectors, arranged in columns of 28 units each, meets the demanding lighting standards set by FIFA.



Apolo XL
APALXL



V. | The constant improvement and evolution of our products may result in some modifications of the technical specifications and characteristics of the products without prior notice.



V. | The constant improvement and evolution of our products may result in some modifications of the technical specifications and characteristics of the products without prior notice.

BENITO

info@benito.com
tel. 93 852 1000

BENITO

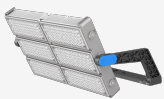
-Street Lighting

Barcelona

Illumination of the UE Rubí field for the Copa del Rey competition.



Apolo XL
APALXL



The Apolo and Milán XXL projectors have been installed at the UE Rubí football field. They contain the necessary and requested parameters to be broadcast on television.

They were used for the Copa del Rey match between UE Rubí and Athletic Club. The Basque team won by two goals to one.

BENITO

info@benito.com
tel. 93 852 1000



BENITO

info@benito.com
tel. 93 852 1000