



Installation of RAMBLA automatic bollards at the Port of Barcelona to control vehicle access, ensuring security without compromising design or aesthetic integration with the surroundings.

Barcelona (Spain)



New automatic LED-equipped Rambla bollards have been installed in the city center of Alicante, with the aim of blocking vehicle access to the seafront promenade.

Alicante (Spain)



Rambla bollards made of satin-finished AISI-304 stainless steel with a diameter of Ø220 x 750 mm in height, installed next to the Port of Barcelona for vehicle access control.

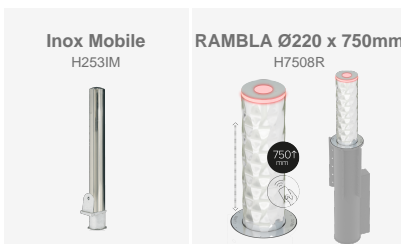
Port of Barcelona

BENITO

-Site Furnishing

Barcelona (Spain)

Installation of RAMBLA automatic bollards at the Port of Barcelona to control vehicle access, ensuring security without compromising design or aesthetic integration with the surroundings.



At the Port of Barcelona, a clear need arose: to strengthen vehicle access control at certain strategic points without affecting daily operations or the image of the surroundings. The coexistence of service traffic, restricted areas, and pedestrian routes required a solution capable of organizing access, increasing safety, and reducing the risk of unauthorized entry, while maintaining a friendly, functional space well integrated into the port landscape. The challenge was to replace the permanent physical barrier that had existed until now, with a significant visual impact and limited operational flexibility, with a more discreet and efficient system.

To address this challenge, a system of RAMBLA automatic bollards by BENITO has been implemented, allowing vehicle access to be regulated in an agile and reliable manner. Their remote-control operation facilitates daily management: authorized personnel can raise or lower the bollards instantly, adapting access control to the different activity periods of the port. This solution provides order and protection in sensitive areas, enhancing safety without compromising design.

In addition, the intervention is complemented by movable stainless-steel bollards, designed for specific situations where access for large vehicles is required. As a result, the Port of Barcelona incorporates a comprehensive solution that combines security, operability, and design, offering flexibility and access management aligned with the real needs of the port environment.



BENITO

info@benito.com
tel. 93 852 1000

BENITO

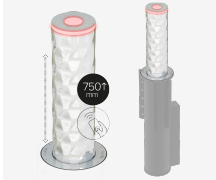
-Site Furnishing

Alicante (Spain)

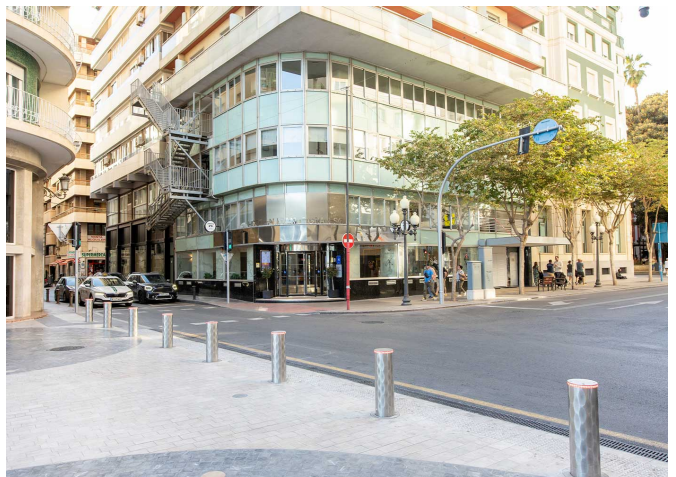
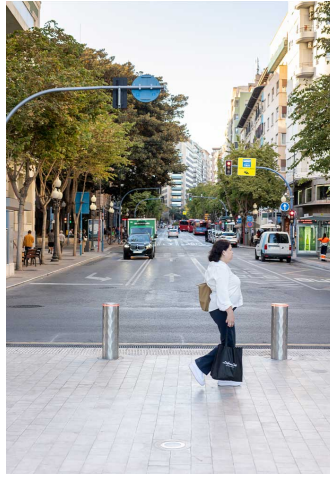
New automatic LED-equipped Rambla bollards have been installed in the city center of Alicante, with the aim of blocking vehicle access to the seafront promenade.



RAMBLA Ø220 x 750mm
H7508R



In Alicante, they present **the new automatic Rambla bollards (H7508R)**, merging functionality and beauty. These emblematic structures not only fulfill the purpose of controlling access to the promenade but also add a touch of elegance and ensure the tranquility of pedestrians. The Rambla bollards stand out for their organic shapes and intricate design, creating a harmonious connection between modernity and tradition. Additionally, their special surface reflects light in a unique way, producing a gleam that makes them visible and attractive even from afar, much more than a conventional smooth bollard. This combination of functionality and aesthetics makes the Rambla bollards a distinctive and memorable element of Alicante's urban center.



V. | The constant improvement and evolution of our products may result in some modifications of the technical specifications and characteristics of the products without prior notice.

BENITO

info@benito.com
tel. 93 852 1000

BENITO

-Site Furnishing

Port of Barcelona

Rambla bollards made of satin-finished AISI-304 stainless steel with a diameter of Ø220 x 750 mm in height, installed next to the Port of Barcelona for vehicle access control.



RAMBLA Ø220 x 750mm
H7508R





BENITO

info@benito.com
tel. 93 852 1000