

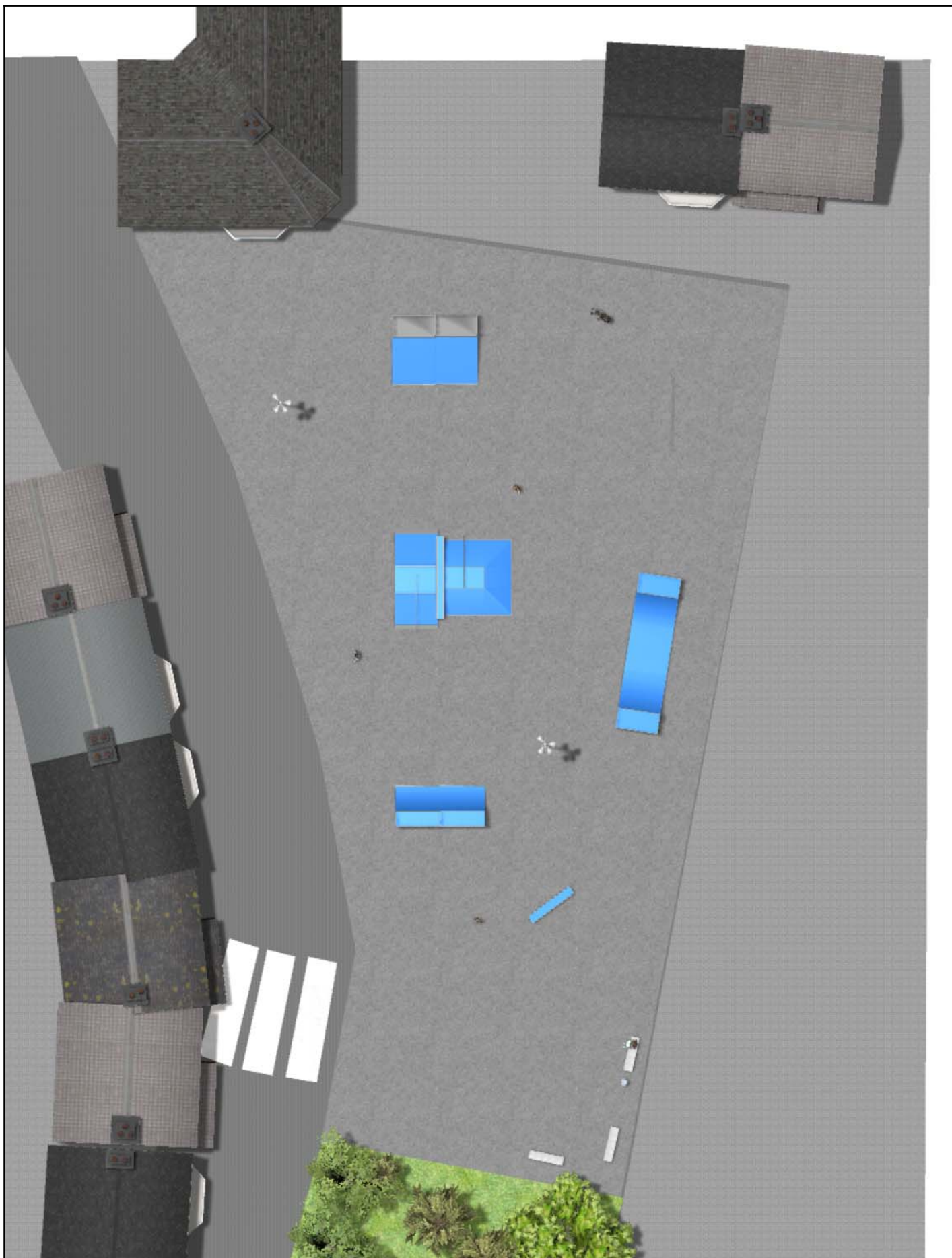
PROJECT

PROJ-174-2025

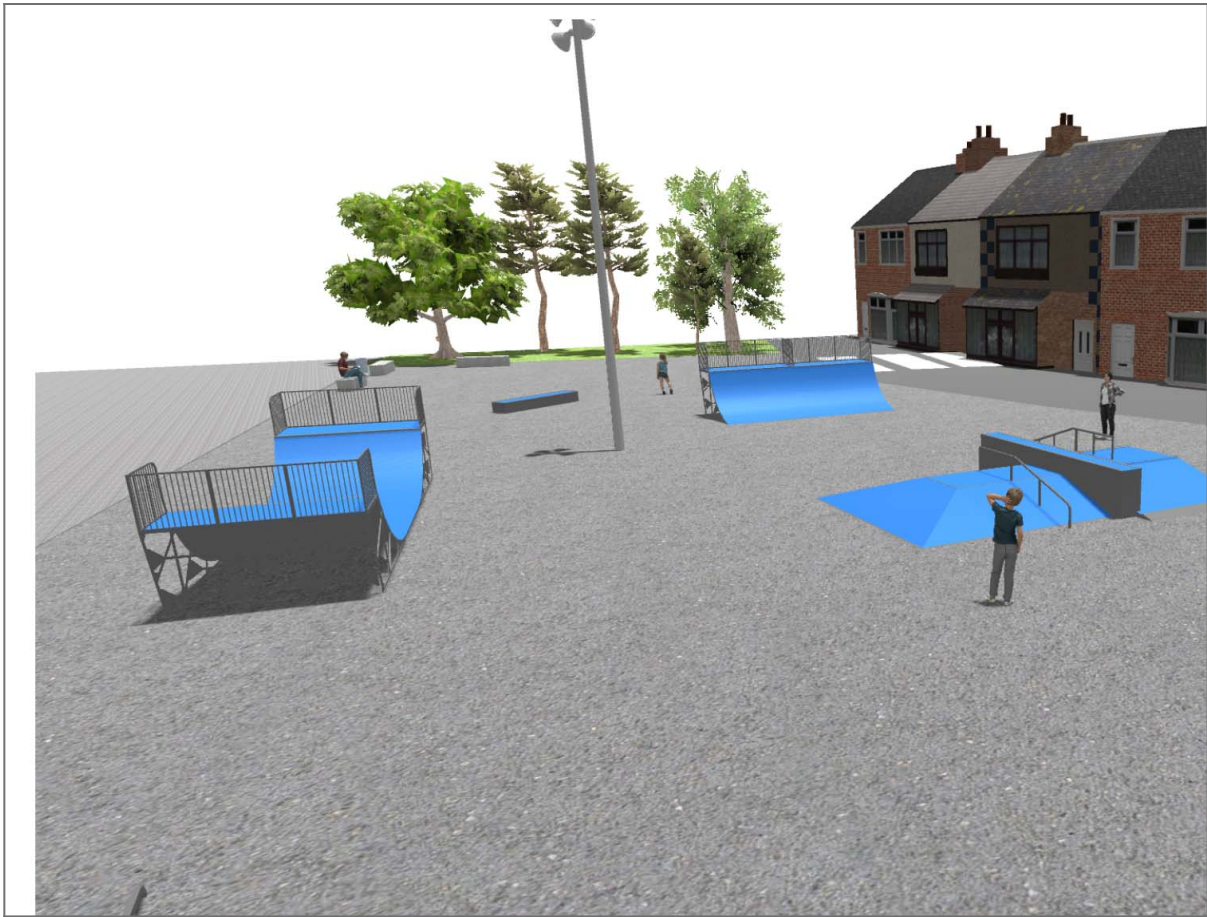
Surface: 540 m²

Email: info@benito.com

Telephone: +34 93 852 1000



BENITO
-Playground Equipment



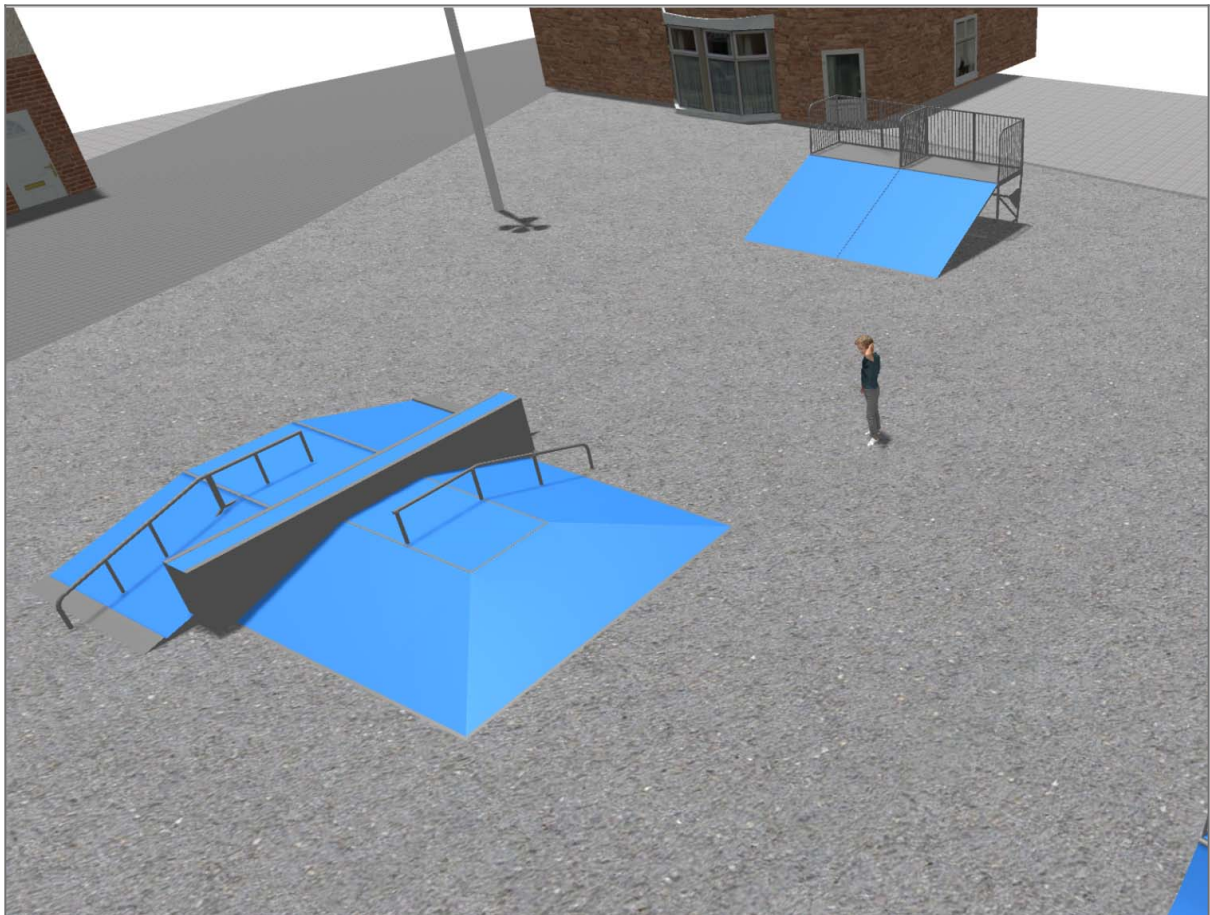
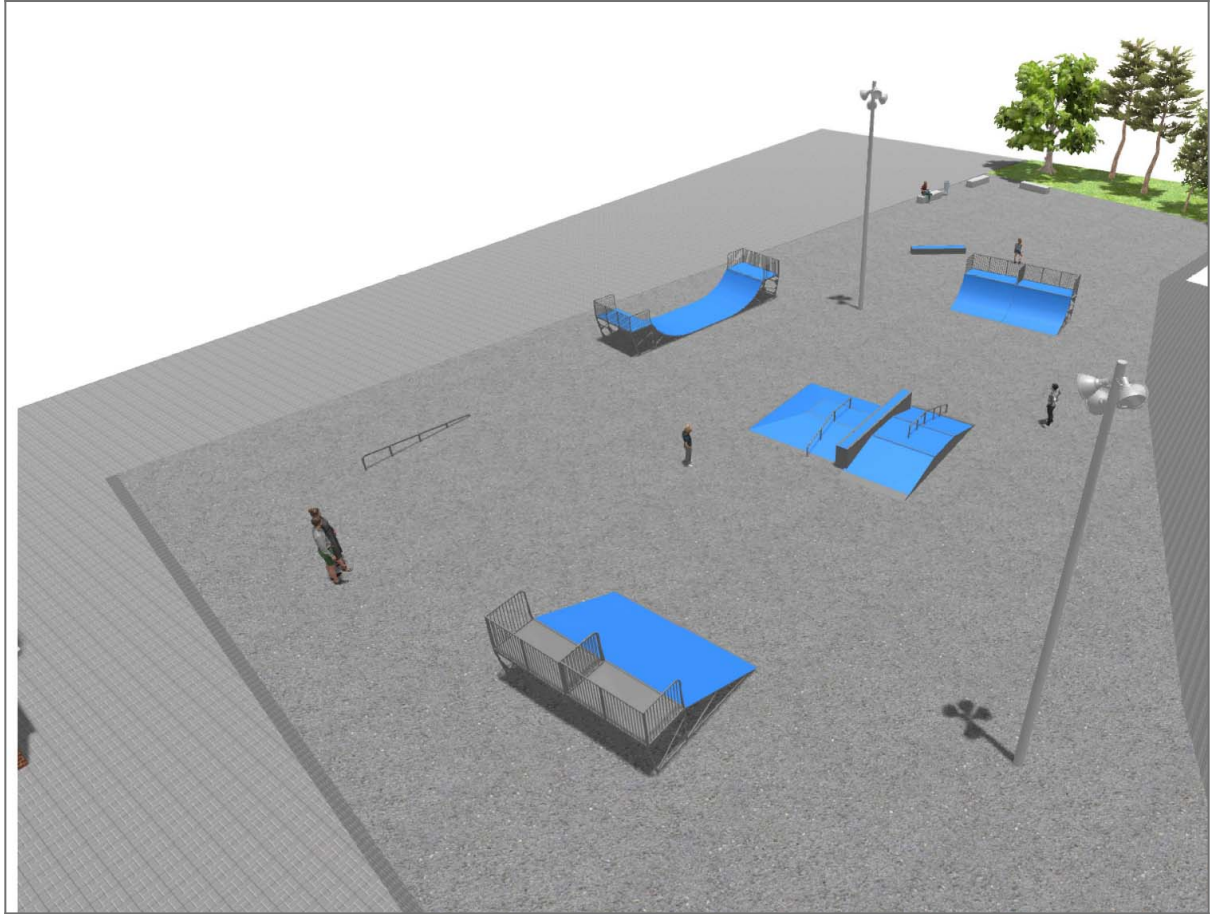
BENITO




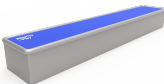
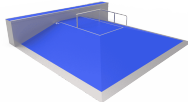
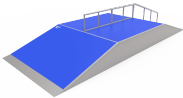
—Playground Equipment



BENITO

—Playground Equipment



Product	Description
JSK1006-K 	Bank 125 The Skates elements are of modular construction that allows with the minimum effort the ability to modify the situation of the modules according to the criteria of each group of skaters. with minimum maintenance and 100% resistant to UVA rays, ice and impacts. Great adherence to the ground. The surface is not heated. Based on modular construction. Data Sheet
JSK1008-K 	Quarter Pipe 140 The Skates elements are of modular construction that allows with the minimum effort the ability to modify the situation of the modules according to the criteria of each group of skaters. with minimum maintenance and 100% resistant to UVA rays, ice and impacts. Great adherence to the ground. The surface is not heated. Based on modular construction. Data Sheet
JSK1048-C 	Rail C The Skates elements are of modular construction that allows with the minimum effort the ability to modify the situation of the modules according to the criteria of each group of skaters. with minimum maintenance and 100% resistant to UVA rays, ice and impacts. Great adherence to the ground. The surface is not heated. Based on modular construction. Data Sheet
JSK1052-K 	Trick Box The Skates elements are of modular construction that allows with the minimum effort the ability to modify the situation of the modules according to the criteria of each group of skaters. with minimum maintenance and 100% resistant to UVA rays, ice and impacts. Great adherence to the ground. The surface is not heated. Based on modular construction. Data Sheet
JSK5013-K 	Pyramid and Curb The Skates elements are of modular construction that allows with the minimum effort the ability to modify the situation of the modules according to the criteria of each group of skaters. with minimum maintenance and 100% resistant to UVA rays, ice and impacts. Great adherence to the ground. The surface is not heated. Based on modular construction. Data Sheet
JSK9025-KBR 	One side Curb Rail 60 The Skates elements are of modular construction that allows with the minimum effort the ability to modify the situation of the modules according to the criteria of each group of skaters. with minimum maintenance and 100% resistant to UVA rays, ice and impacts. Great adherence to the ground. The surface is not heated. Based on modular construction. Data Sheet