

Light fittings for the inside of a mall in Jeddah, Saudi Arabia

---

Jeddah (Arabia Saudita)



BENITO installs 126 light points around a hotel in Doha.

---

Doha (Qatar)



Petah Tikva is a city in the Central District of Israel, equipped with Elium and Vialia Evo luminaires by BENITO.

---

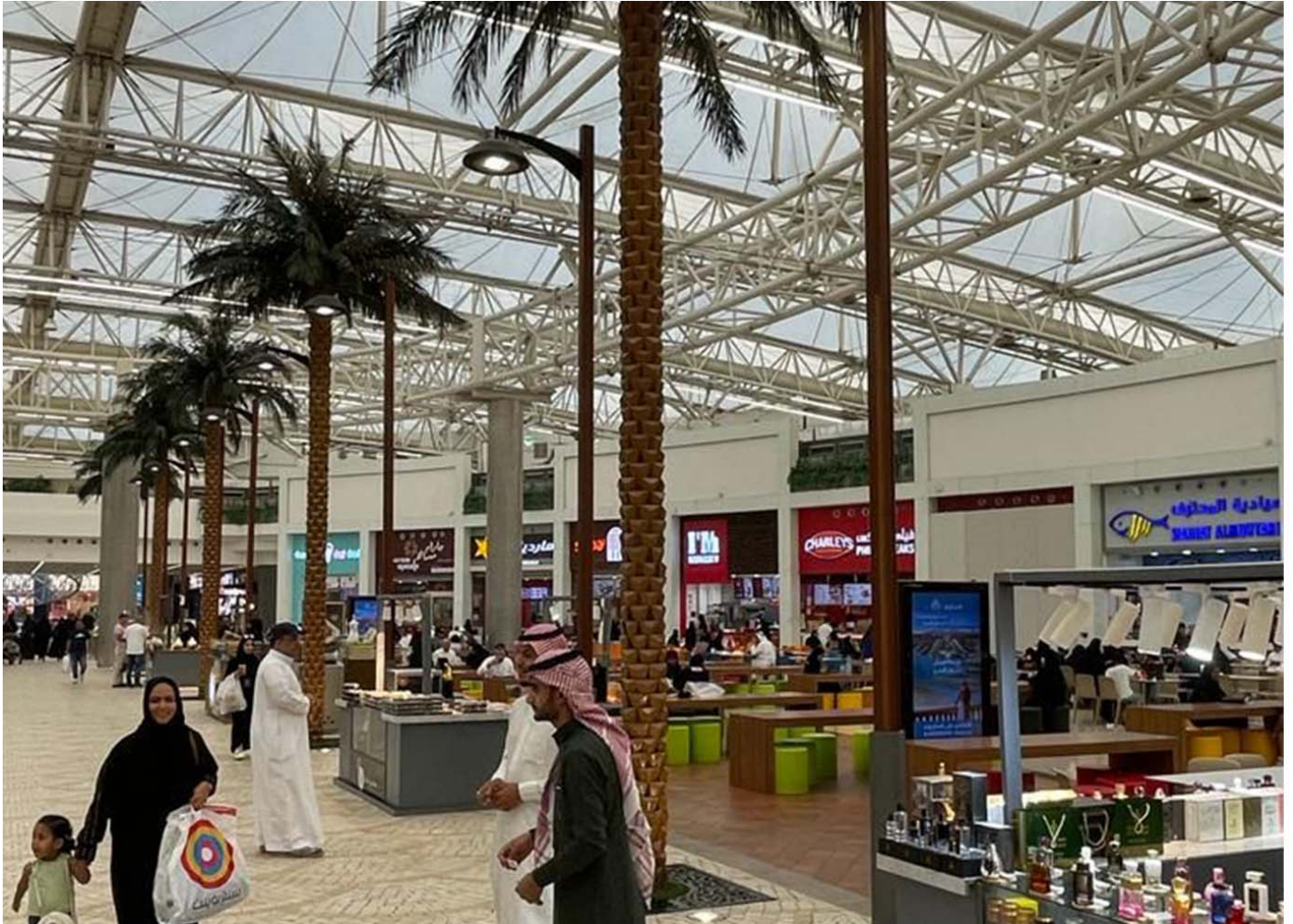
Petah Tikva (Israel)

# BENITO

## -Street Lighting

## Jeddah (Arabia Saudita)

Light fittings for the inside of a mall in Jeddah, Saudi Arabia



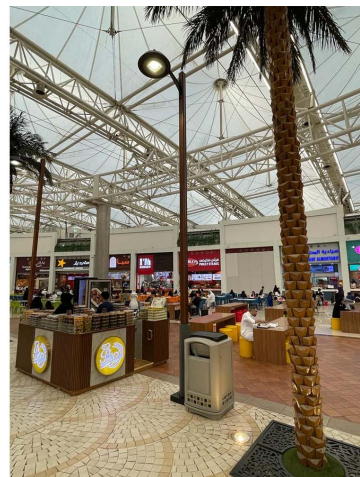
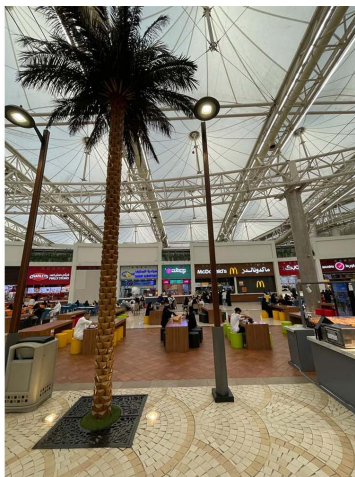
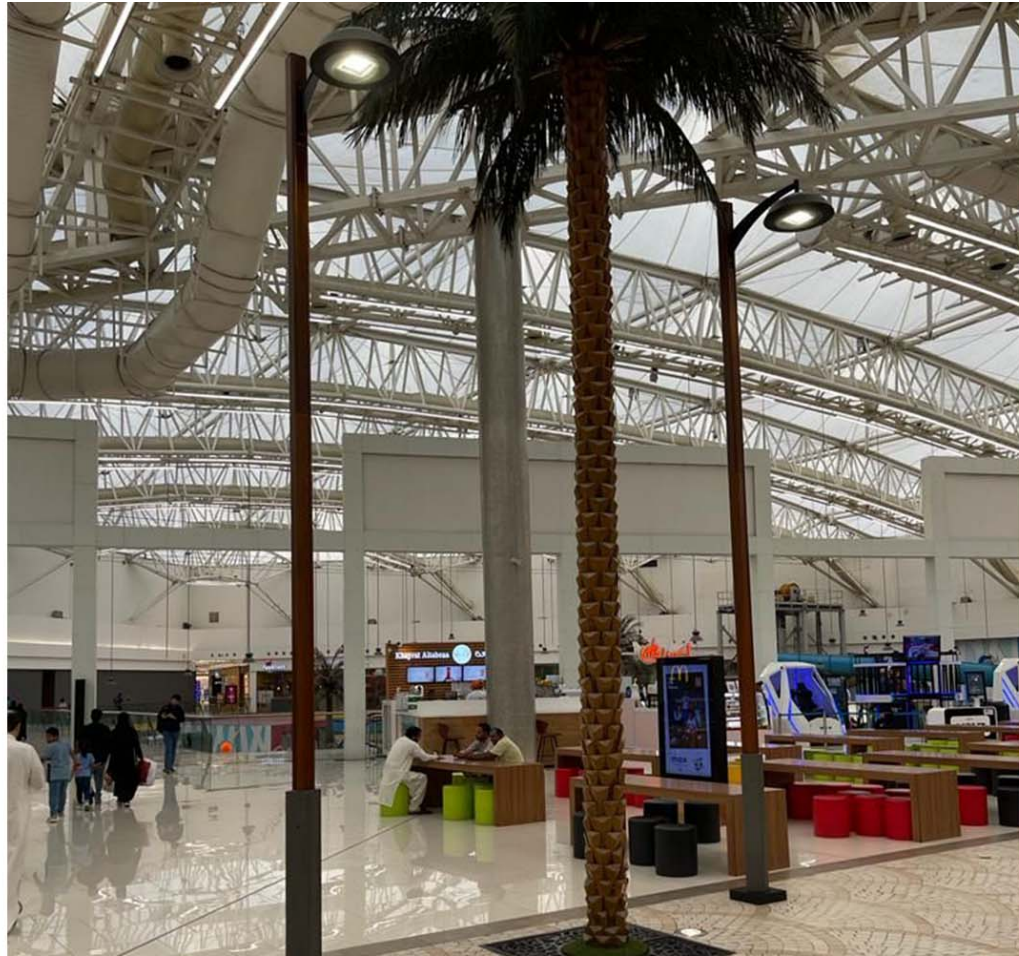
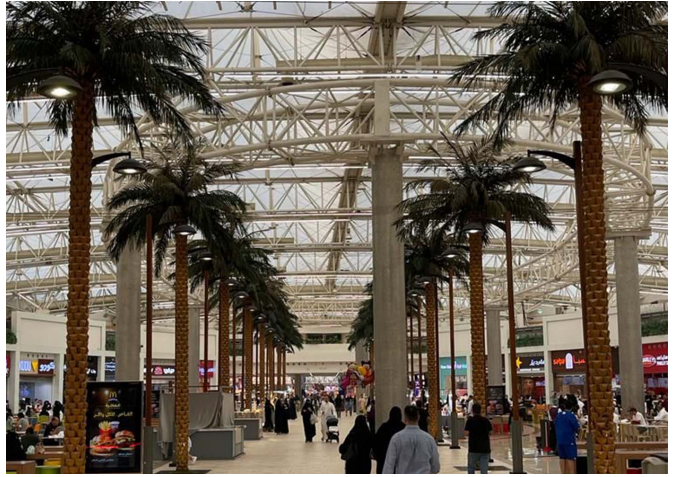
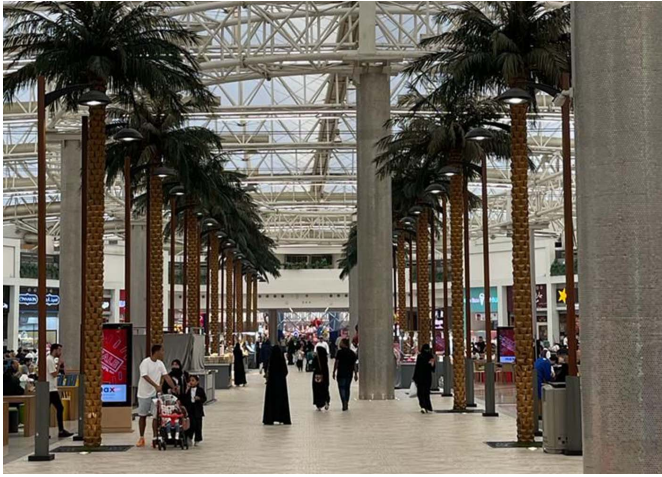
Vialia Evo  
ILVE



INTROPDF##

The Mall of Arabia, located in the city of Jeddah in Saudi Arabia, has installed 50 light fittings inside the 261,000 square metre shopping centre. The Vialia model is a column-mounted light fitting with a compact profile and an internal LED cooling system.

This shopping centre is located 10 minutes from this city's airport, located on the shores of the Red Sea and the starting point of the pilgrimage to the holy cities of Mecca and Medina



V. | The constant improvement and evolution of our products may result in some modifications of the technical specifications and characteristics of the products without prior notice.

# BENITO

## -Street Lighting

# Doha (Qatar)

BENITO installs 126 light points around a hotel in Doha.



Vialia Evo  
ILVE

In order to provide services around the Rizos Gulf Hotel Doha, BENITO has installed 126 Vialia Evo light points with 5 meter Ter columns. They are located in an area next to the sports facilities where the World Cup was held and where an Accor Group hotel is built.

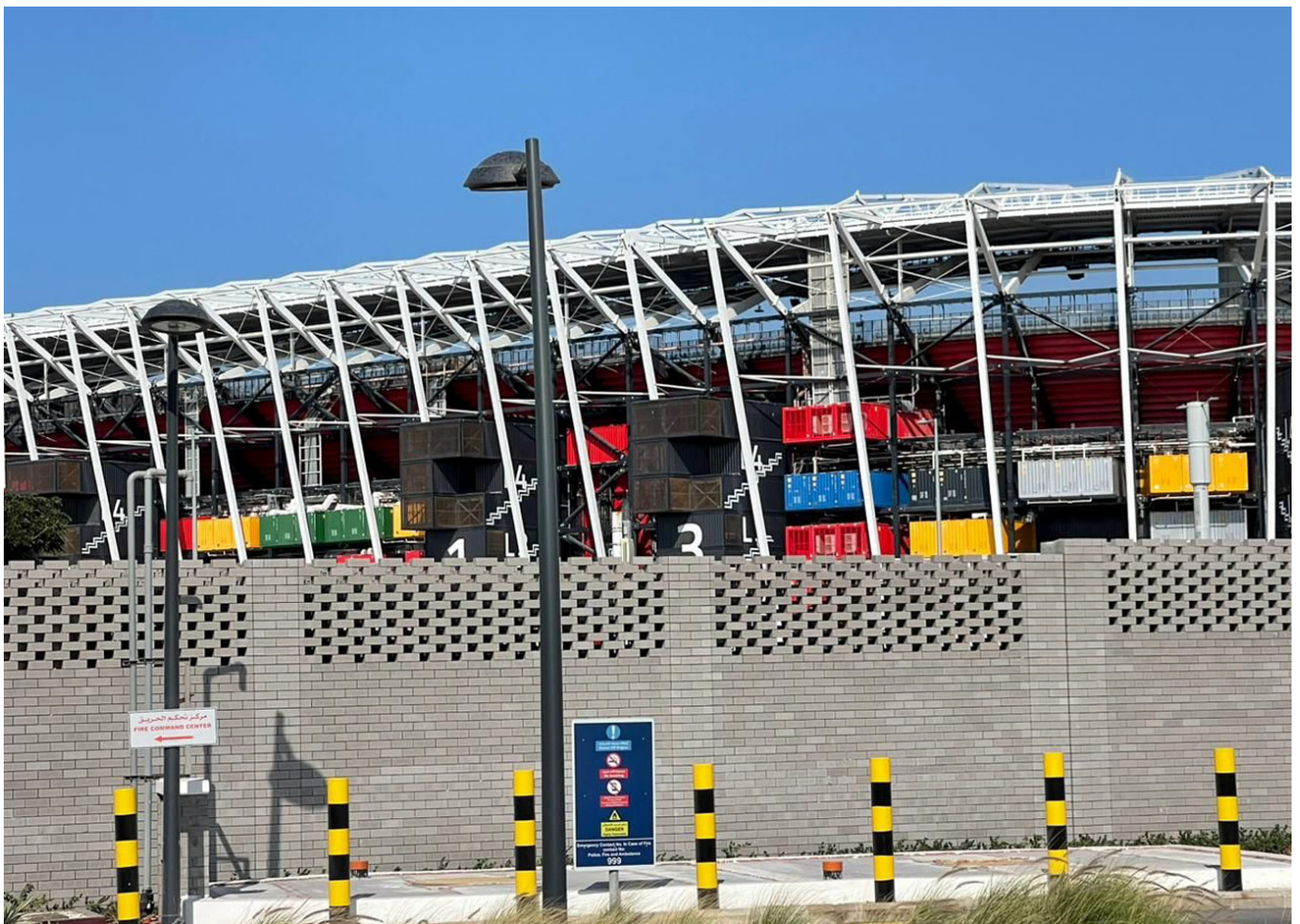
The Vialia Evo is a luminaire with a classic design that is very suitable for urban residential environments and is prepared for any remote control system.

The Ter column is made in one piece and it is designed to withstand extreme weather conditions. It includes a steel bracket that gives it better security.

V. | The constant improvement and evolution of our products may result in some modifications of the technical specifications and characteristics of the products without prior notice.

# BENITO

[info@benito.com](mailto:info@benito.com)  
tel. 93 852 1000



V. | The constant improvement and evolution of our products may result in some modifications of the technical specifications and characteristics of the products without prior notice.

**BENITO**

info@benito.com  
tel. 93 852 1000

# BENITO

## -Street Lighting

## Petah Tikva (Israel)

Petah Tikva is a city in the Central District of Israel, equipped with Elium and Vialia Evo luminaires by BENITO.



Elium M  
ILLIM



Vialia Evo  
ILVE



Extra flat **Elium luminaires**, with an excellent relation between efficiency and cost were installed. **Vialia Evo luminaires** were also installed in this residential area. These are very functional luminaires with a technically impeccable design. They are ideal to be installed on 4m to 12m lighting poles in residential and urban large and narrow streets, urban roads, cycle lanes, parking lots, squares and avenues.

The constant improvement and evolution of our products may result in some modifications of the technical specifications and characteristics of the products without prior notice.



The constant improvement and evolution of our products may result in some modifications of the technical specifications and characteristics of the products without prior notice.