

BENITO

–Playground Equipment



Project

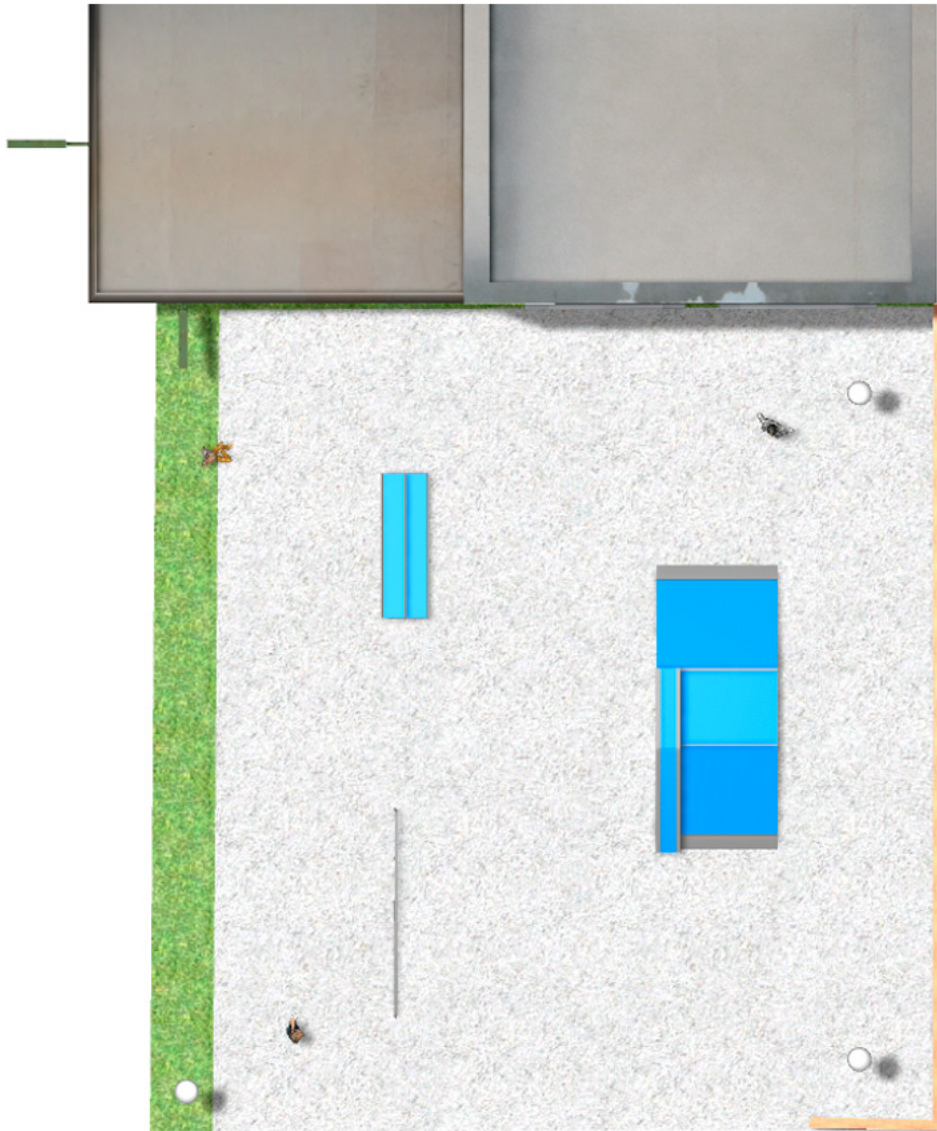
PROJ-047-2018

Surface: 250 m²

Email: info@benito.com

Telephone: +34 93 852 1000

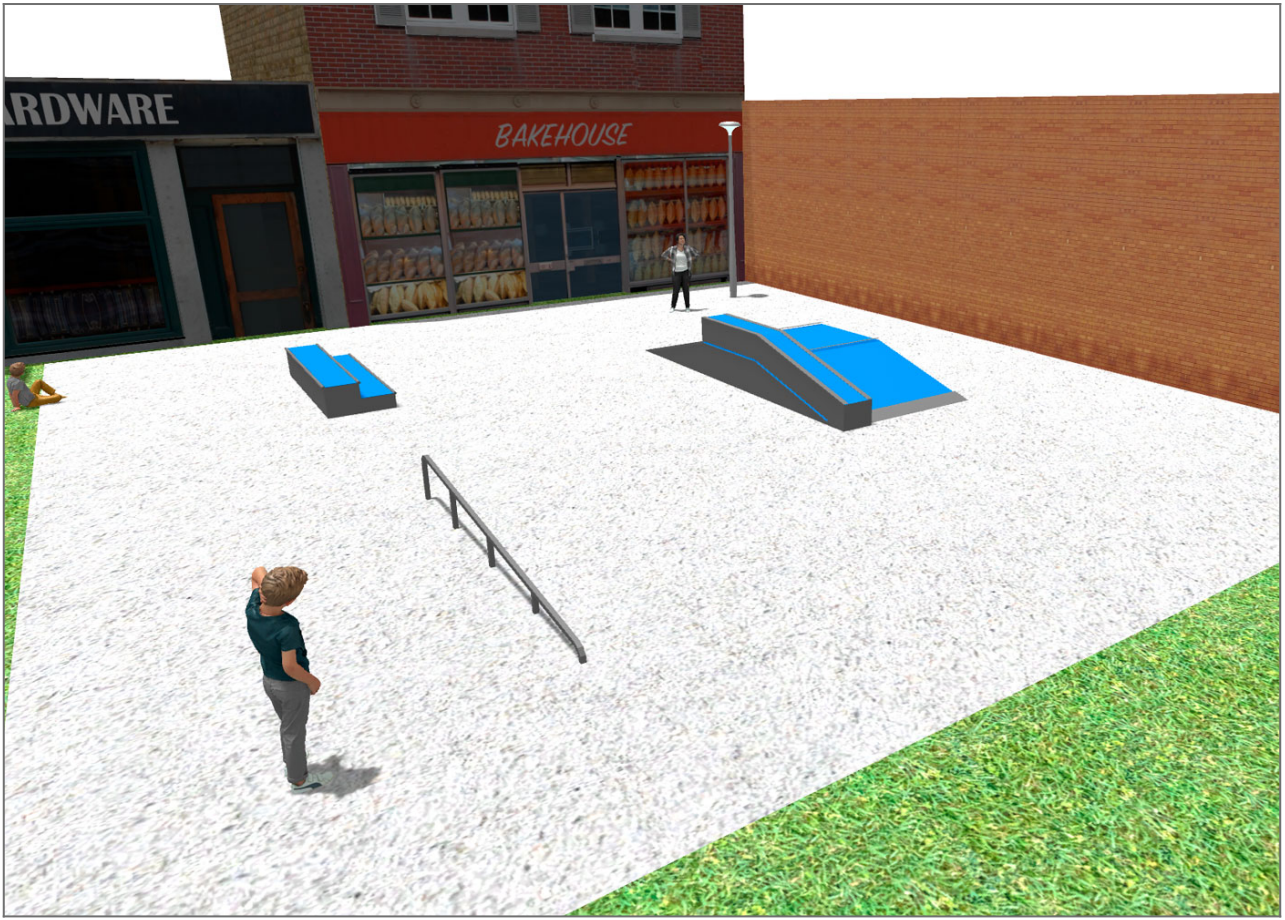
BENITO
-Playground Equipment

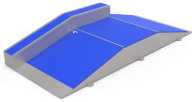
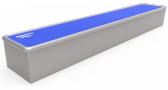



BENITO
-Playground Equipment



BENITO
-Playground Equipment



| Product | Description |
|--|--|
| <p data-bbox="140 161 300 188">JSK9025-KBS</p>  | <p data-bbox="363 161 622 188">One side Curb Box 60</p> <p data-bbox="363 192 1497 300">The Skates elements are of modular construction that allows with the minimum effort the ability to modify the situation of the modules according to the criteria of each group of skaters. with minimum maintenance and 100% resistant to UVA rays, ice and impacts. Great adherence to the ground. The surface is not heated. Based on modular construction.</p> <p data-bbox="363 331 625 358">Data Sheet Certificate</p> |
| <p data-bbox="156 430 284 456">JSK1052-K</p>  | <p data-bbox="363 430 478 456">Trick Box</p> <p data-bbox="363 461 1497 568">The Skates elements are of modular construction that allows with the minimum effort the ability to modify the situation of the modules according to the criteria of each group of skaters. with minimum maintenance and 100% resistant to UVA rays, ice and impacts. Great adherence to the ground. The surface is not heated. Based on modular construction.</p> <p data-bbox="363 600 625 627">Data Sheet Certificate</p> |
| <p data-bbox="156 698 284 725">JSK1048-C</p>  | <p data-bbox="363 698 440 725">Rail C</p> <p data-bbox="363 730 1497 837">The Skates elements are of modular construction that allows with the minimum effort the ability to modify the situation of the modules according to the criteria of each group of skaters. with minimum maintenance and 100% resistant to UVA rays, ice and impacts. Great adherence to the ground. The surface is not heated. Based on modular construction.</p> <p data-bbox="363 869 625 896">Data Sheet Certificate</p> |