

BENITO

-Street Lighting



Project

PROJ-045-2022

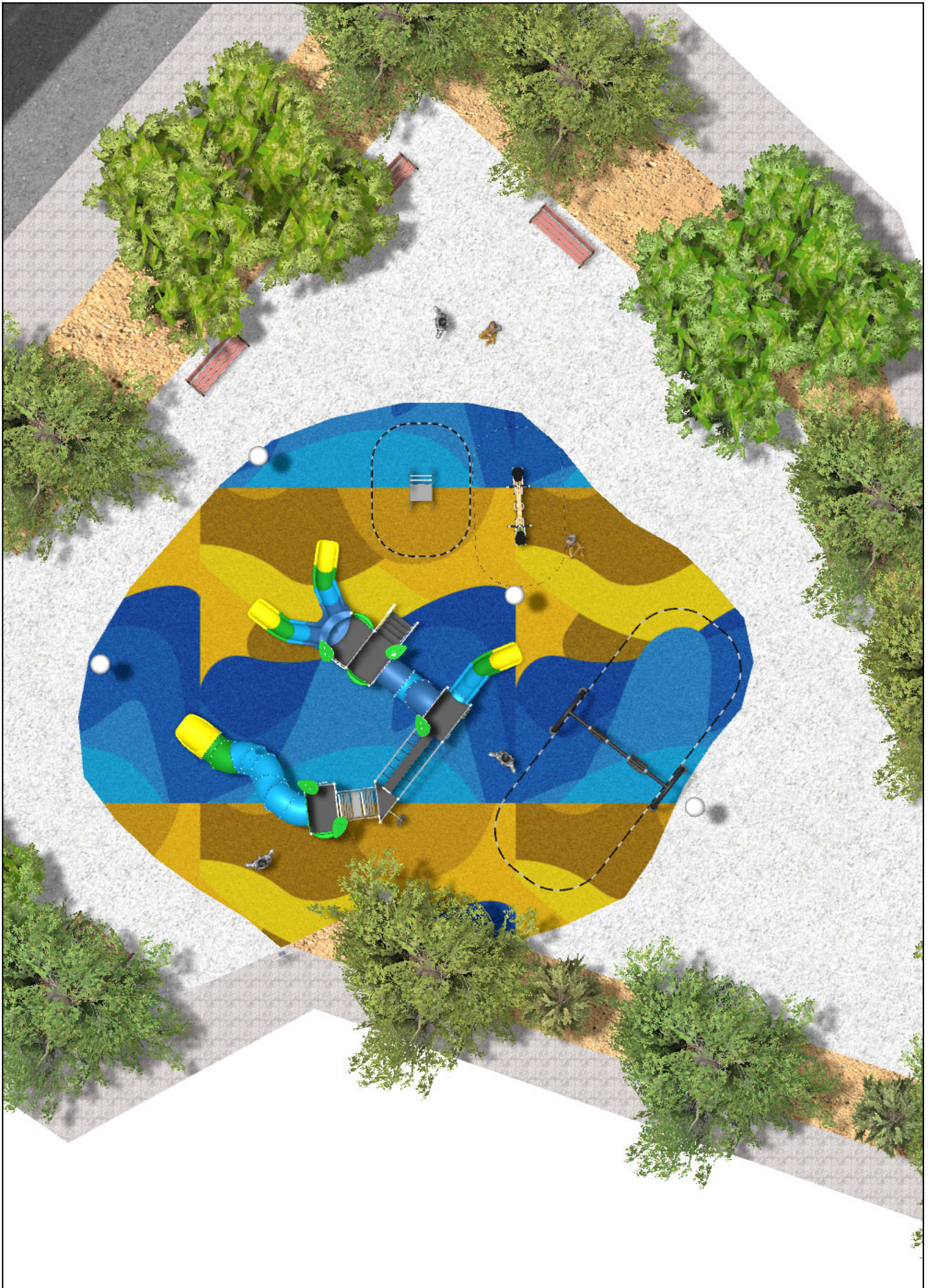
Surface: 160 m²

Email: info@benito.com

Telephone: +34 93 852 1000

BENITO

-Street Lighting



BENITO








-Street Lighting



BENITO

-Street Lighting



Product	Description
<p data-bbox="188 159 252 185">ILCZ</p> 	<p data-bbox="363 159 517 185">Citizen Clear</p> <p data-bbox="363 188 1506 275">Decorative or functional luminaire ideal for residential areas (green spaces, pedestrian areas, parks...). Extensive optical and light distributions, glare control and cut-off suitable for pedestrians. Excellent relation between efficiency and cost.</p> <p data-bbox="363 302 552 329">Data Sheet ILCZ</p>
<p data-bbox="172 427 268 454">JALU06</p> 	<p data-bbox="363 427 432 454">Alu 6</p> <p data-bbox="363 456 1506 544">The ALU collection maximises playability. Including lots of slides, bridges and dynamic elements, the ALU line encourages children to play, even those with disabilities. Its bright colours don't go unnoticed and the quality of materials guarantee high durability.</p> <p data-bbox="363 571 1062 598">Data Sheet JALU06 Acreditative Letter Certificate Conformity</p>
<p data-bbox="164 696 276 723">JCART02</p> 	<p data-bbox="363 696 432 723">Metal</p> <p data-bbox="363 725 900 752">Structure, Metal: Zinc-plated and lacquered iron.</p> <p data-bbox="363 779 603 806">Data Sheet JCART02</p>
<p data-bbox="180 965 260 992">JFS10</p> 	<p data-bbox="363 965 432 992">Rider</p> <p data-bbox="363 994 1474 1021">Fun and educative see-saw for children. Made of resistant materials according to the EN1176 standard.</p> <p data-bbox="363 1048 887 1075">Data Sheet Certificate Certificate Conformity</p>
<p data-bbox="172 1234 268 1261">JJMM03</p> 	<p data-bbox="363 1234 440 1261">Julián</p> <p data-bbox="363 1263 1474 1317">Designed by Javier Mariscal. Half-artist half-designer, his childlike strokes and Latin aesthetic combine perfectly with this kind of product.</p> <p data-bbox="363 1344 983 1370">Data Sheet JJMM03 Certificate Certificate Conformity</p>
<p data-bbox="156 1503 284 1529">JKSP11000</p> 	<p data-bbox="363 1503 512 1529">Curvo Mixto</p> <p data-bbox="363 1532 1474 1585">Swings for children made of different materials such as wood and steel. Resistant to abrasion, corrosion and bad weather conditions.</p> <p data-bbox="363 1612 887 1639">Data Sheet Certificate Certificate Conformity</p>
<p data-bbox="180 1771 260 1798">UM301</p> 	<p data-bbox="363 1771 448 1798">Citizen</p> <p data-bbox="363 1800 1506 1966">Exclusive CITIZEN design Bench , total dimensions (length x height x depth) 1800x820x650 mm, manufactured with ductile iron legs (treated with the Ferrus process, the triple-layer protector for iron, which guarantees optimal corrosion resistance). Epoxy primer finish and Marson-colored polyester powder paint. Five tropical wood planks (treated with a triple-layer Lignus coating, a fungicidal, insecticidal and water-repellent protector) in a natural finish. Stainless steel hardware. Recommended anchoring: four M10 expansion bolts depending on the surface and project.</p> <p data-bbox="363 1968 667 1995">Optional items not included:</p> <p data-bbox="363 1998 1118 2024">Customizable marking with 74x35 mm aluminum plate or milled board.</p> <p data-bbox="363 2051 1023 2078">Data Sheet UM301 Data Sheet Certificate TMA/851/2021</p>