



The Elche bus interchange incorporates Riga benches from the Benito DESIGN+ collection, modular pieces with versatile design that allow the creation of linear, curved, or fully circular configurations.

Alicante (Spain)

BENITO

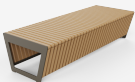
-Site Furnishing

Alicante (Spain)

The Elche bus interchange incorporates Riga benches from the Benito DESIGN+ collection, modular pieces with versatile design that allow the creation of linear, curved, or fully circular configurations.



RIGA
UM3D65



RIGA
UM3D67



Olea
PA651



The new bus interchange in Elche, in the province of Alicante, opts for contemporary and functional urban furniture with the installation of Riga benches from the Benito DESIGN+ collection and the OLEA bin in corten steel finish. This bench model stands out for its modular concept and elegant aesthetics, which allow comfort and versatility to be combined in high-traffic public spaces.

The long Riga bench offers linear solutions to organize waiting areas, while the curved Riga bench makes it possible to configure enveloping and dynamic shapes. Thanks to their full compatibility, both models can be easily integrated, creating furniture systems that adapt to the different needs of the urban environment. One of their most distinctive applications is the creation of fully circular benches, encouraging social interaction and collective rest.

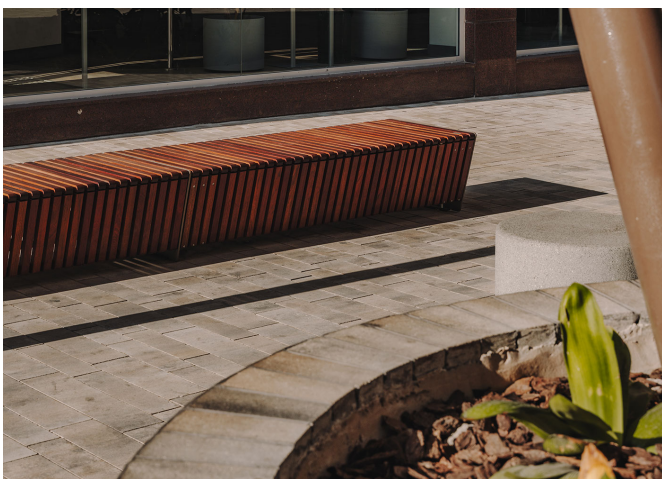
With this choice, Elche reaffirms its commitment to a more welcoming, innovative, and sustainable public space, in addition to a spectacular installation.

Architects: ARN

Photographer: Oleh Kardash

BENITO

info@benito.com
tel. 93 852 1000



V. | The constant improvement and evolution of our products may result in some modifications of the technical specifications and characteristics of the products without prior notice.

BENITO

info@benito.com
tel. 93 852 1000