

# BENITO

–Playground Equipment



## Project

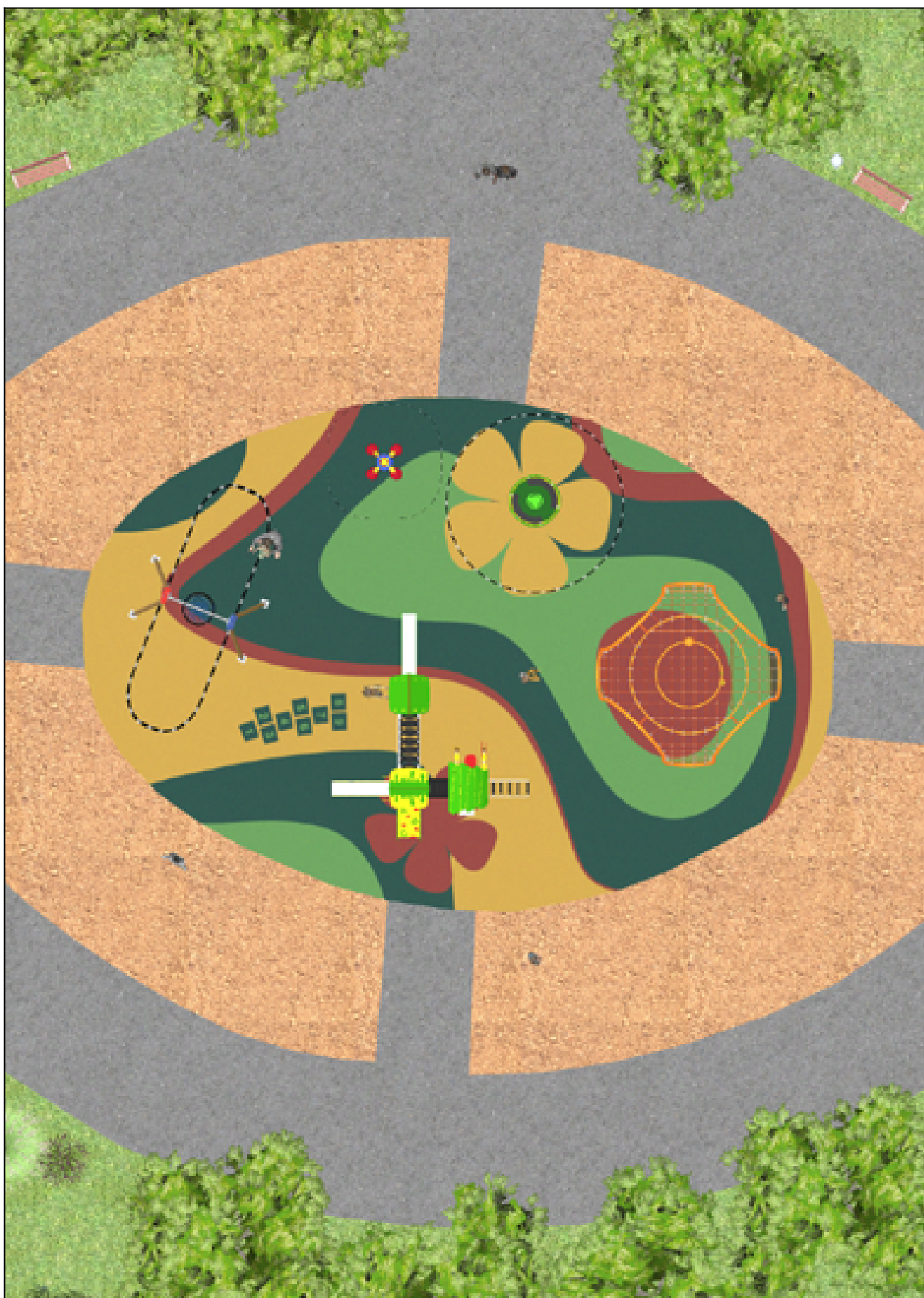
PROJ-136-2022

Surface: 275 m<sup>2</sup>

Email: [info@benito.com](mailto:info@benito.com)

Telephone: +34 93 852 1000

**BENITO**  
-Playground Equipment



**BENITO**  
-Playground Equipment

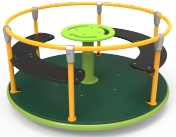



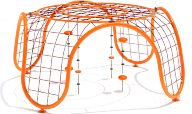


**BENITO**  
-Playground Equipment



**BENITO**  
-Playground Equipment



| Product  | Description  |
|--|--|
| <p>JC06B</p>      | <p><b>Cosmic</b><br/> <b>Structure, Metal:</b> galvanised and powder-coated steel resistant to corrosion. Colours: RAL6018, RAL1028</p> <p><a href="#">Data Sheet JC06B</a> <a href="#">Certificate</a></p>  |
| <p>JFS06</p>      | <p><b>Flop</b><br/> Fun and educative spring swing for children. Made of resistant materials according to the EN1176 standard.</p> <p><a href="#">Data Sheet</a> <a href="#">Certificate</a> <a href="#">Certificate Conformity</a></p>  |
| <p>JL1000010</p>  | <p><b>METAL 1 Nest</b><br/> Swings for children made of different materials such as wood and steel. Resistant to abrasion, corrosion and bad weather conditions.</p> <p><a href="#">Data Sheet</a> <a href="#">Certificate</a> <a href="#">Certificate Conformity</a></p>  |
| <p>JPIN03</p>   | <p><b>Three</b><br/> A collection of children's play equipment <b>made with maintenance-free materials</b>, featuring an innovative mixed-extrusion post made of aluminum and polymer, one-piece aluminum steps, and non-slip polymer platforms. Perfect industrialization for a collection where no design detail has been overlooked. Users will find inclusive play in every aspect.</p> <p><a href="#">Data Sheet JPIN03</a> <a href="#">Acreditative Letter</a> <a href="#">Certificate Conformity</a></p>  |
| <p>PRI5</p>     | <p><b>Red Cuat</b><br/> <b>How high can you go?</b><br/> The CUAT Network is a large-scale climbing structure, made with a metal frame and vandal-resistant ropes. It is designed to promote motor skills in up to 20 children simultaneously, adapting to all ages. Its modern and attractive aesthetic invites active play, stimulating the improvement of motor skills, balance and dexterity, while offering an exciting and dynamic play experience. With a surface area of 60 m², this net becomes a key element capable of bringing uniqueness, visual impact and high playability to any space.</p> <p><a href="#">Data Sheet PRI5</a></p> |