



The new furnishings at the Parque Ecológico Lago de Texcoco include Kube chairs and bins, Petrus loungers and Lisa concrete planters, along with Stark luminaires and Benito sports courts.

---

**Ciudad de México (Mexico)**



A new urban installation is presented in Reus. With Kube Kurve elements, Dara litter bins, and planters and chairs Lisa, the space is transformed into a modern and functional area for the community.

---

**Tarragona (Spain)**



Excellent combination of planters and benches from the LISA collection, an aesthetic, pleasant, and unique line that invites relaxation and enjoyment of the beauty of the place. The best choice for creating a charming space!

---

**Jaén**



The Barcelona-El Prat Airport is equipped with planters made of precast textured grey granite concrete highly resistant to vandalism.

---

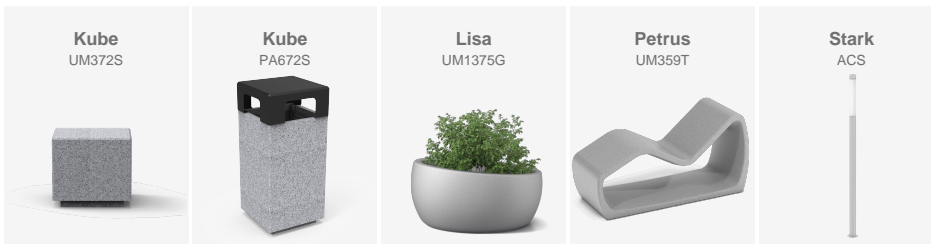
**Barcelona (Spain)**

# BENITO

## -Site Furnishing

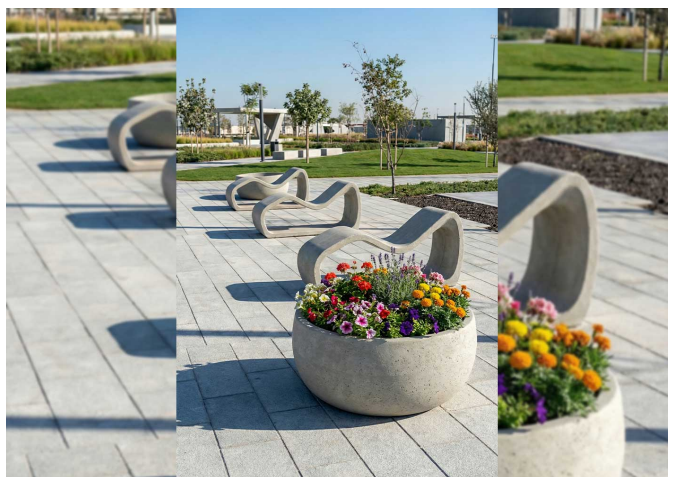
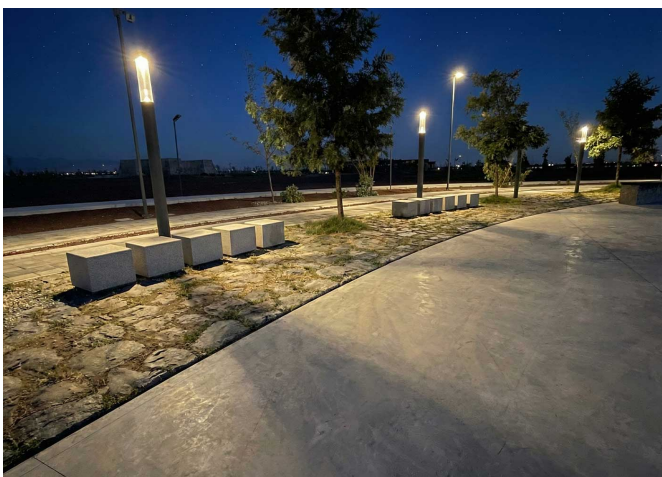
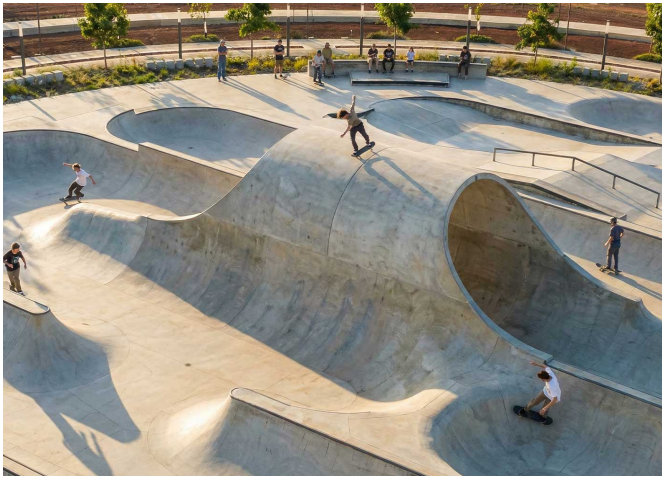
## Ciudad de México (Mexico)

The new furnishings at the Parque Ecológico Lago de Texcoco include Kube chairs and bins, Petrus loungers and Lisa concrete planters, along with Stark luminaires and Benito sports courts.



In Ecatepec de Morelos, very close to Mexico City, the **Parque Ecológico Lago de Texcoco** has been developed as one of the country's largest environmental, recreational and sports projects. **Designed to restore the former lacustrine environment and transform it into a green space accessible to millions of people**, the park integrates a wide network of facilities: **football and American-football fields, baseball fields and batting cages, multi-use courts, a skatepark, parkour circuits, a labyrinth, picnic areas, a bicycle-rental station, outdoor gyms and multiple rest and social spaces.**

Benito Urban has contributed to the equipment of this landmark project by installing **Kube chairs and bins, Petrus loungers and Lisa planters, all made of concrete**, a material that ensures high resistance and maximum durability in an intensive-use environment. Additionally, **Benito sports courts and Stark luminaires** have been incorporated, strengthening the park's activity offering and providing lighting suited to its needs. Thanks to these actions, the Parque Ecológico Lago de Texcoco is consolidated as a modern, ecological and fully equipped public space for sports, recreation and social integration.



**BENITO**

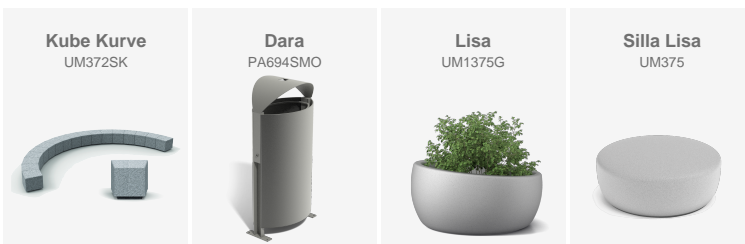
info@benito.com  
tel. 93 852 1000

# BENITO

## -Site Furnishing

## Tarragona (Spain)

A new urban installation is presented in Reus. With Kube Kurve elements, Dara litter bins, and planters and chairs Lisa, the space is transformed into a modern and functional area for the community.



The recent installation in front of the Mercadona in Reus, Tarragona, represents a step forward in sustainable and people-centered urbanism. This complete renovation, designed with minimalist elements, creates a welcoming space for the community. With Kube Kurve modules, Lisa chairs, Lisa planters, and Dara litter bins, resting areas and green spaces are provided. This approach not only enhances the urban landscape but also promotes social interaction and community well-being. This initiative reflects Reus's commitment to a more inclusive and environmentally respectful future, in line with sustainability values and community care.

V. | The constant improvement and evolution of our products may result in some modifications of the technical specifications and characteristics of the products without prior notice.

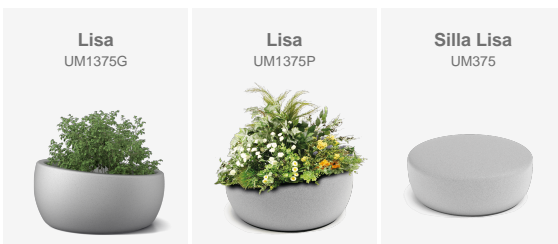


V. | The constant improvement and evolution of our products may result in some modifications of the technical specifications and characteristics of the products without prior notice.

**BENITO**

info@benito.com  
tel. 93 852 1000

Excellent combination of planters and benches from the LISA collection, an aesthetic, pleasant, and unique line that invites relaxation and enjoyment of the beauty of the place. The best choice for creating a charming space!



Jaén has chosen to install urban furniture from the LISA concrete collection, an innovative series designed for rest, care, and beautification of the environment. This furniture is robust and durable, ensuring its long lifespan. Additionally, these furniture elements not only enhance the landscape but also invite people to stop, rest, and enjoy the surroundings. With this combination, a cozy atmosphere is created that encourages relaxation and appreciation of the beauty of the place.

The LISA planters and backless benches offer a modern and durable design, manufactured with prefabricated gray granite-colored concrete, with a weathered and hydrophobic finish. This finish prevents the surface from getting dirty and degrading due to the effects of moisture, ensuring the long life of the furniture elements.



**BENITO**

info@benito.com  
tel. 93 852 1000

# BENITO

## -Site Furnishing

## Barcelona (Spain)

The Barcelona-El Prat Airport is equipped with planters made of precast textured grey granite concrete highly resistant to vandalism.



**Kube**  
UM1372



**Lisa**  
UM1375G



Implementing preventive measures against terrorist threats is essential in airports.

The Josep Tarradellas Barcelona-El Prat airport has opted for installing **Kube and Lisa concrete planters** in strategic areas such as entries. They have a double aesthetic and protective function as they allow to avoid ram-raids.

Concrete, which is a very resistant material, is always a good option when the aim of the installation is to prevent vandalism.

The constant improvement and evolution of our products may result in some modifications of the technical specifications and characteristics of the products without prior notice.



The constant improvement and evolution of our products may result in some modifications of the technical specifications and characteristics of the products without prior notice.