



Installation of white concrete Kube tables at the Santa Inés Valley viewpoint, on the island of Fuerteventura, creating a resting area integrated into the landscape.

Fuerteventura (Spain)



Casavatore, a municipality located in the Metropolitan City of Naples, has opted for BENITO products.

Casavatore (Italy)



Stadium for the FIFA World Cup 2022, equipped with street furniture by BENITO.

Al Wakrah (Qatar)

BENITO

-Site Furnishing

Fuerteventura (Spain)

Installation of white concrete Kube tables at the Santa Inés Valley viewpoint, on the island of Fuerteventura, creating a resting area integrated into the landscape.



Kube
UM372M

The **Santa Inés Valley Viewpoint** is a panoramic site located on the island of Fuerteventura, in the municipality of Betancuria, designed to offer privileged views of the valley and its natural surroundings. In this location, **Kube tables made of white concrete** have been installed with the aim of enhancing the visitor experience and highlighting the landscape.

Kube tables require no maintenance and are designed to withstand outdoor conditions, enduring continuous exposure to sun, rain, and wind, making them a particularly suitable solution for this type of space. Their sober and contemporary design allows for harmonious integration into the viewpoint without interfering with the views or altering the identity of the site.

The robustness and durability of concrete ensure intensive and long-term use in an outdoor environment with changing climatic conditions. This intervention reinforces the character of the viewpoint as a place for stopping and contemplation, encouraging social use and a closer relationship between people and the landscape of the Santa Inés Valley.

V. | The constant improvement and evolution of our products may result in some modifications of the technical specifications and characteristics of the products without prior notice.



V. | The constant improvement and evolution of our products may result in some modifications of the technical specifications and characteristics of the products without prior notice.

BENITO

-Street Lighting

Casavatore (Italy)

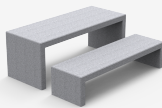
Casavatore, a municipality located in the Metropolitan City of Naples, has opted for BENITO products.



Citizen Clear
ILCZ0



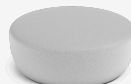
Kube
UM372M



Kube
PA672



Lisa
UM375



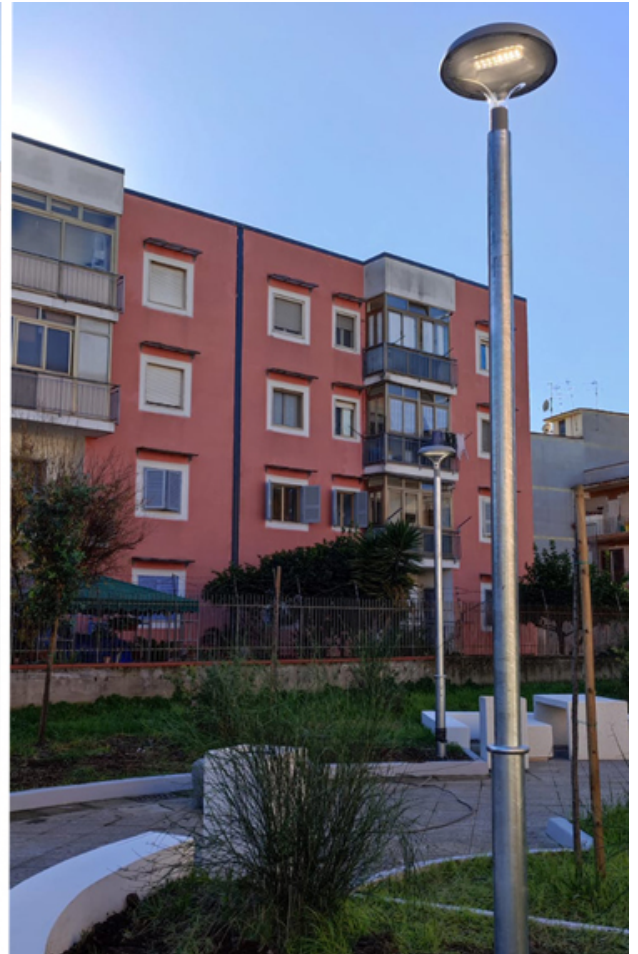
Oslo
ICN136



More precisely, the products installed are Kube tables (UM372M), made of precast textured granite white concrete, and matching Kube bins (PA672).

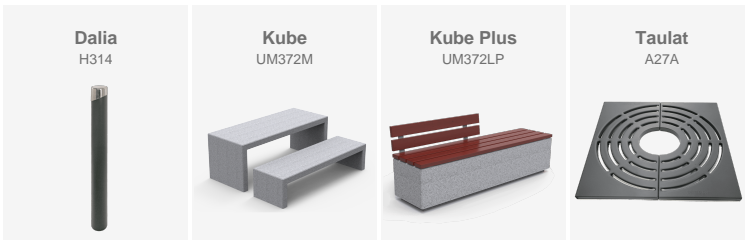
Citizen luminaires (ILCZ0) were also installed. This product outstands for its design as well as an excellent relation between efficiency and cost. It is ideal for all kinds of residential areas thanks to its extensive optical and light distributions.

The constant improvement and evolution of our products may result in some modifications of the technical specifications and characteristics of the products without prior notice.



The constant improvement and evolution of our products may result in some modifications of the technical specifications and characteristics of the products without prior notice.

Stadium for the FIFA World Cup 2022, equipped with street furniture by BENITO.



The stadium of Al Wakrah can host up to 40,000 people. It was designed by the British-Iraqi architect Zaha Hadid and it is located 15km at the South of Doha.

This city is known for its commercial port as well as for being the entry to the state capital.

“An extraordinary stadium for an adventurous city.”

Modern, futuristic and functional, it is still loyal to the Qatari tradition. It integrates cultural references according to the weather conditions and functional requirements.

BENITO urban furniture has been installed outside the stadium. The selected option was the **KUBE Collection** – benches (UM372), chairs (UM372S), bins (PA672) and tables (UM372M), with straight and balanced lines, designed to embellish the area by giving it a contemporary style. They have a robust structure made of precast textured granite grey concrete, which guarantees a comfortable sitting experience even when temperatures get really high during summer.

Dalia bollards (H251) and several types of tree grates were also installed near the stadium.

