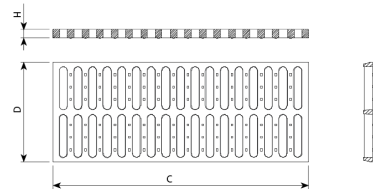


RM50

RM25



Mecalinea C2 is designed to support soft traffic. Perfect for installing on roads with an ADT of 500 to 1.000, particularly hard shoulders and ditches.

- Made from spheroidal graphite ductile cast iron, according to ISO 1083 (Type 500-7) and standard EN 1563.
- Compliant with the European standard UNE EN-124.
- Weight and/or chain device closure (optional).
- RMD joint system between grilles (optional).
- Metal non-slip surface.
- Coated with non-toxic, non-flammable and non-polluting water-soluble black paint.



[CAD](#) | [HD image](#)