

# BENITO

-Street Lighting



## Project

PROJ-045-2022

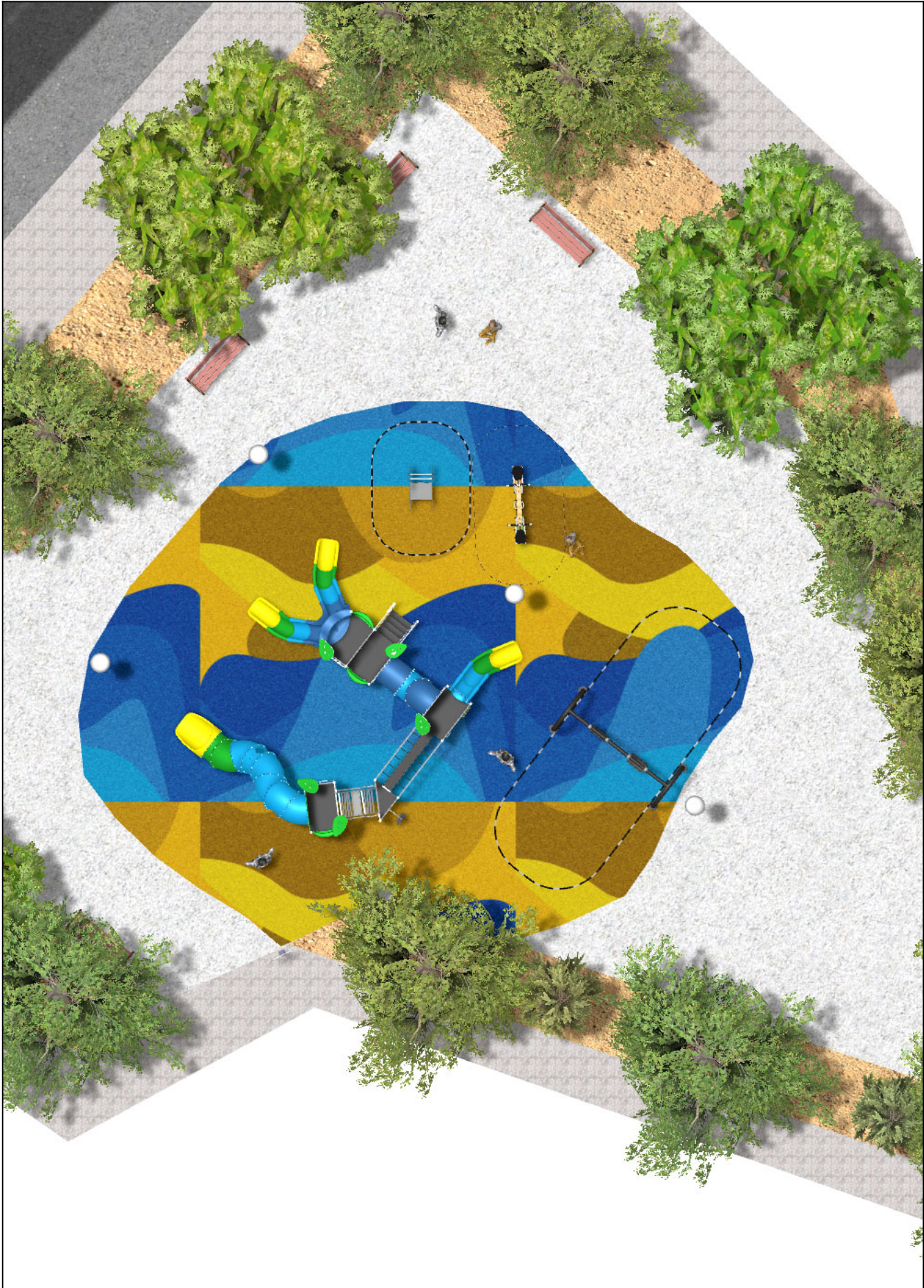
Surface: 160 m<sup>2</sup>

Email: [info@benito.com](mailto:info@benito.com)

Telephone: +34 93 852 1000

# BENITO

-Street Lighting



# BENITO








-Street Lighting



# BENITO

-Street Lighting



Product	Description
<p>ILCZ</p> 	<p><b>Citizen Clear</b> Decorative or functional luminaire ideal for residential areas (green spaces, pedestrian areas, parks...). Extensive optical and light distributions, glare control and cut-off suitable for pedestrians. Excellent relation between efficiency and cost.</p> <p><a href="#">Data Sheet ILCZ</a></p>
<p>JALU06</p> 	<p><b>Alu 6</b> The ALU collection <b>maximises playability</b>. Including lots of slides, bridges and dynamic elements, the ALU line encourages children to play, even those with disabilities. Its bright colours don't go unnoticed and the quality of materials guarantee high durability.</p> <p><a href="#">Data Sheet JALU06</a> <a href="#">Certificate Conformity</a> <a href="#">Acreditative Letter</a></p>
<p>JCART02</p> 	<p><b>Metal</b> <b>Structure, Metal:</b> Zinc-plated and lacquered iron.</p> <p><a href="#">Data Sheet JCART02</a></p>
<p>JFS10</p> 	<p><b>Rider</b> Fun and educative see-saw for children. Made of resistant materials according to the EN1176 standard.</p> <p><a href="#">Data Sheet</a> <a href="#">Certificate</a> <a href="#">Certificate Conformity</a></p>
<p>JJMM03</p> 	<p><b>Julián</b> Designed by <b>Javier Mariscal</b>. Half-artist half-designer, his childlike strokes and Latin aesthetic combine perfectly with this kind of product.</p> <p><a href="#">Data Sheet JJMM03</a> <a href="#">Certificate</a> <a href="#">Certificate Conformity</a></p>
<p>JKSP11000</p> 	<p><b>Curvo Mixto</b> Swings for children made of different materials such as wood and steel. Resistant to abrasion, corrosion and bad weather conditions.</p> <p><a href="#">Data Sheet</a> <a href="#">Certificate</a> <a href="#">Certificate Conformity</a></p>
<p>UM301</p> 	<p><b>Citizen</b> Exclusive CITIZEN design Bench , total dimensions (length x height x depth) 1800x820x650 mm, manufactured with ductile iron legs (treated with the Ferrus process, the triple-layer protector for iron, which guarantees optimal corrosion resistance). Epoxy primer finish and Marson-colored polyester powder paint. Five tropical wood planks (treated with a triple-layer Lignus coating, a fungicidal, insecticidal and water-repellent protector) in a natural finish. Stainless steel hardware. Recommended anchoring: four M10 expansion bolts depending on the surface and project. Optional items not included: Customizable marking with 74x35 mm aluminum plate or milled board.</p> <p><a href="#">Data Sheet UM301</a> <a href="#">Data Sheet</a> <a href="#">Certificate TMA/851/2021</a></p>