

BENITO

–Playground Equipment



Project

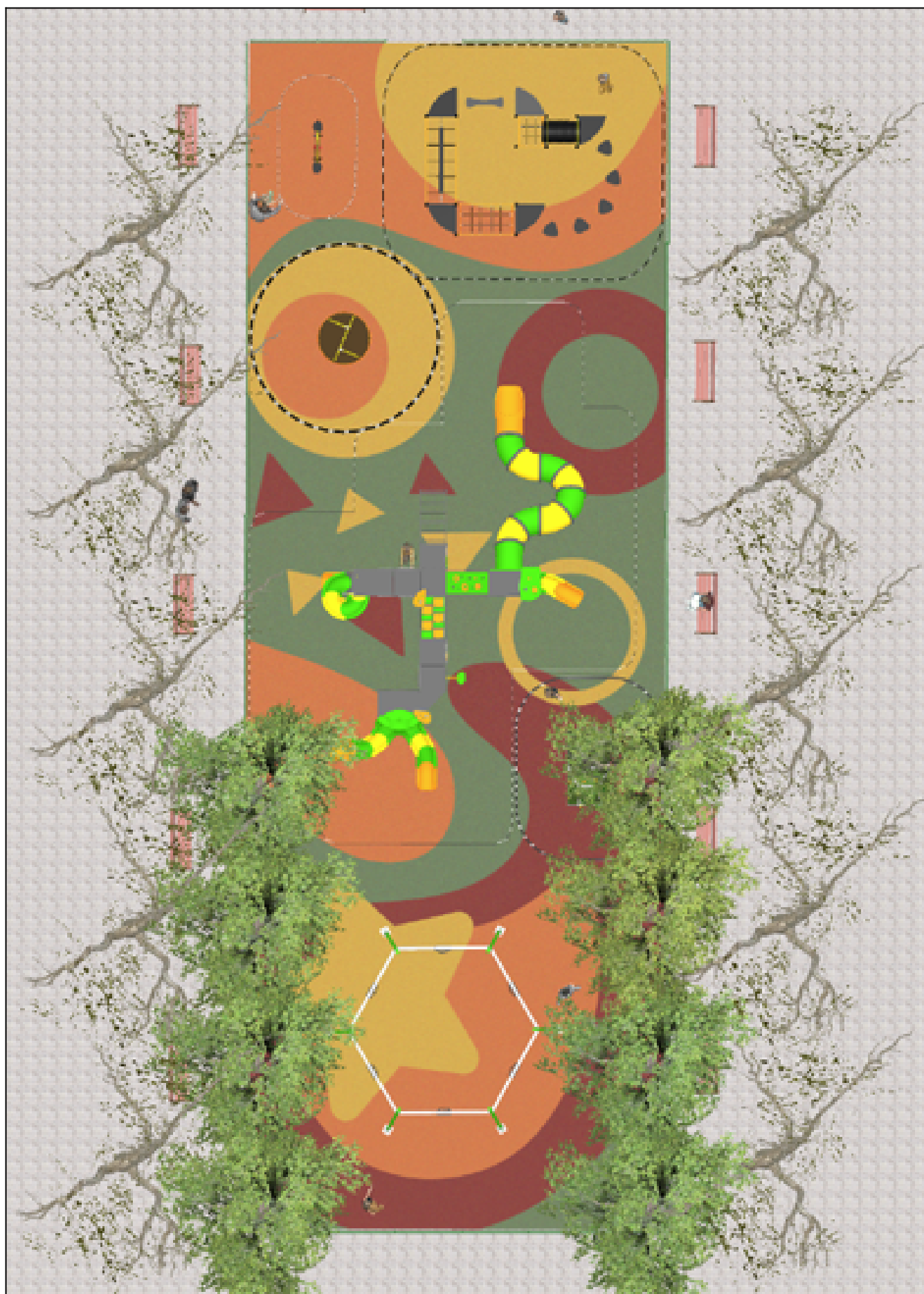
PROJ-135-2022

Surface: 408 m²

Email: info@benito.com

Telephone: +34 93 852 1000

BENITO
-Playground Equipment



BENITO
-Playground Equipment



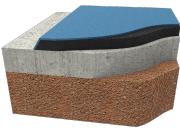






BENITO
-Playground Equipment



BENITO
-Playground Equipment



Product	Description
<p data-bbox="172 159 264 185">JALU10</p> 	<p data-bbox="368 159 416 185">Elix</p> <p data-bbox="368 188 1505 275">The ALU collection maximises playability. Including lots of slides, bridges and dynamic elements, the ALU line encourages children to play, even those with disabilities. Its bright colours don't go unnoticed and the quality of materials guarantee high durability.</p> <p data-bbox="368 304 584 331">Data Sheet JALU10</p>
<p data-bbox="188 427 248 454">JC05</p> 	<p data-bbox="368 427 459 454">Sputnik</p> <p data-bbox="368 456 1458 515">Structure, Metal: galvanised and powder-coated rotating shaft. Colours: JC05 - RAL6018, RAL1028 / JC05B - RAL2008, RAL1028.</p> <p data-bbox="368 544 884 571">Data Sheet Certificate Certificate Conformity</p>
<p data-bbox="193 696 244 723">JCC</p> 	<p data-bbox="368 696 571 723">Caucho Continuo</p> <p data-bbox="368 725 1417 813">High-quality, non-slip, non-toxic, and eco-friendly rubber, RECYCLED AND RECYCLABLE. Our continuous rubber flooring is manufactured using high-quality materials in accordance with current European safety standard EN-1177.</p> <p data-bbox="368 842 544 869">Data Sheet JCC</p>
<p data-bbox="181 965 255 992">JFS14</p> 	<p data-bbox="368 965 416 992">Gus</p> <p data-bbox="368 994 1485 1021">Fun and educative see-saws for children. Made of resistant materials according to the EN1176 standard.</p> <p data-bbox="368 1050 627 1077">Data Sheet Certificate</p>
<p data-bbox="161 1234 282 1261">JL2060000</p> 	<p data-bbox="368 1234 512 1261">Hexa Crome</p> <p data-bbox="368 1263 1477 1319">Swings for children made of different materials such as wood and steel. Resistant to abrasion, corrosion and bad weather conditions.</p> <p data-bbox="368 1348 1010 1375">Data Sheet JL2060000 Certificate Certificate Conformity</p>
<p data-bbox="177 1503 266 1529">JPV413</p> 	<p data-bbox="368 1503 448 1529">Loop 4</p> <p data-bbox="368 1532 1469 1619">Structure, Metal: hot-dip galvanised and powder coated 80x80x2mm posts resistant to abrasion, corrosion and bad weather conditions. 2mm thick AISI 304 polished stainless steel slide surface curved and molded in one piece. Ø32mm protective bars made of AISI 304 stainless steel.</p> <p data-bbox="368 1648 970 1675">Data Sheet Certificate Conformity Acreditative Letter</p>
<p data-bbox="172 1771 271 1798">JROK02</p> 	<p data-bbox="368 1771 448 1798">Roko 2</p> <p data-bbox="368 1800 1485 1968">Bouldering is a form of climbing that consists of climbing small walls, without the need for protective materials such as ropes or harnesses. With the ROKO modular elements we managed to turn this sport into a game and bring it to urban spaces. This line, characterised by its giant geometric shapes, is produced with high-quality materials that provide socialisation and climbing spaces for older children and teenagers. A game option with different levels of height to find different challenges depending on one's skills.</p> <p data-bbox="368 1998 724 2024">Data Sheet JROK02 Certificate</p>