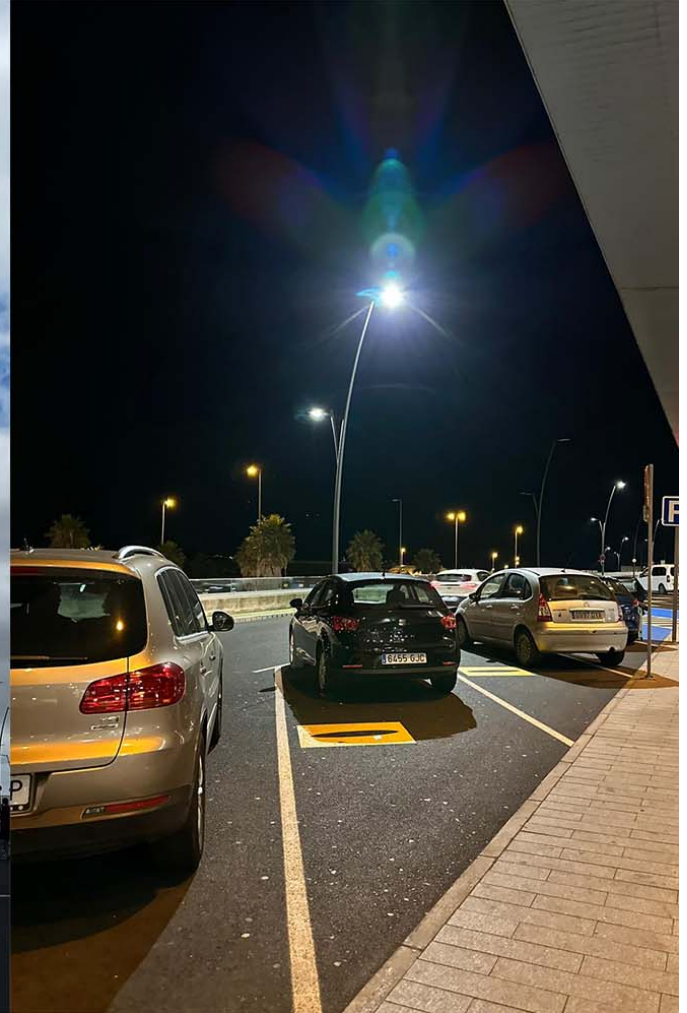


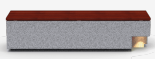
BENITO luminaires, benches and bollards in the Tenerife North Airport (Canary Islands).



**Kube Luz**  
UM372L



**Kube Luz Mad**  
UM372LML



**Milan M**  
ALM

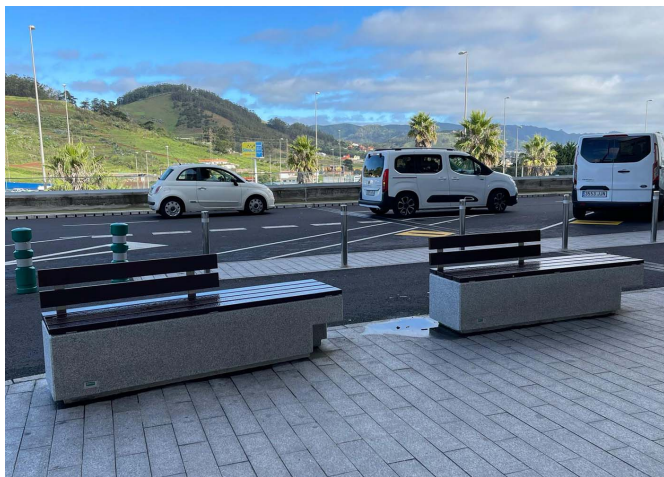


BENITO has improved the exterior of Tenerife North Airport, located in the municipality of San Cristóbal de La Laguna in the Canary Islands, with different elements. Specifically, it has installed luminaires with Milan M floodlights, the Kube bench model made of grey concrete and combined with and without wooden boards, and stainless steel bollards to mark the traffic route of cars.

At this airport, located 10 kilometers from the capital, Santa Cruz de Tenerife, there is regular national air traffic, and around 48% of flights are connections with the rest of the islands in the archipelago.

The constant improvement and evolution of our products may result in some modifications of the technical specifications and characteristics of the products without prior notice.





The constant improvement and evolution of our products may result in some modifications of the technical specifications and characteristics of the products without prior notice.