

# BENITO

-Playground Equipment



## Project

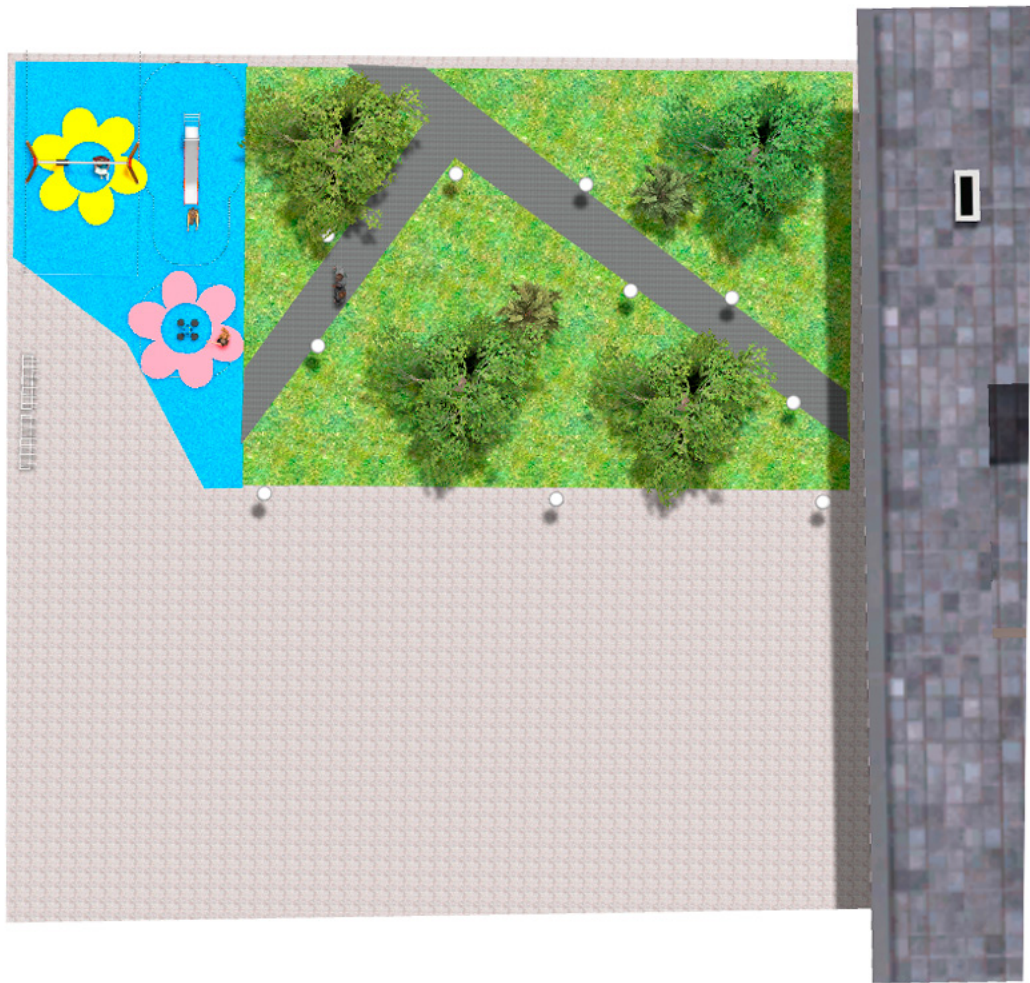
PROJ-026-2021

Surface: 75 m<sup>2</sup>

Email: [info@benito.com](mailto:info@benito.com)

Telephone: +34 93 852 1000

**BENITO**  
-Playground Equipment






**BENITO**  
-Playground Equipment



**BENITO**  
-Playground Equipment



Product	Description
<p data-bbox="188 159 248 185">JT05</p> 	<p data-bbox="363 159 421 185"><b>Fast</b></p> <p data-bbox="363 188 1453 275"><b>Panels, HDPE:</b> high-density polyethylene characterised by its resistance to chemical abrasives. As a polymer, it is unaffected by corrosion. Due to its light elastic nature, it offers high resistance to impact, making it very difficult to break.</p> <p data-bbox="363 304 627 331"><a href="#">Data Sheet</a> <a href="#">Certificate</a></p>
<p data-bbox="156 427 280 454">JL1520000</p> 	<p data-bbox="363 427 547 454"><b>MADERA 2 Flat</b></p> <p data-bbox="363 456 1477 515">Swings for children made of different materials such as wood and steel. Resistant to abrasion, corrosion and bad weather conditions.</p> <p data-bbox="363 544 884 571"><a href="#">Data Sheet</a> <a href="#">Certificate</a> <a href="#">Certificate Conformity</a></p>
<p data-bbox="180 696 256 723">JFS06</p> 	<p data-bbox="363 696 421 723"><b>Flop</b></p> <p data-bbox="363 725 1410 784">Fun and educative spring swing for children. Made of resistant materials according to the EN1176 standard.</p> <p data-bbox="363 813 884 840"><a href="#">Data Sheet</a> <a href="#">Certificate</a> <a href="#">Certificate Conformity</a></p>