

BENITO

magazine

REPORT

Technology-driven smart and sustainable logistics centre · page 4

TRENDS

Safe mobility takes a hold in cities · page 10

INNOVATION

A dozen new products in six months · page 14

COLLABORATION

The VORA, a new piece of equipment created with the Elisava Barcelona School of Design and Engineering · page 18



URBAN COLOR COLLECTION

MINSK BENCH & MIELEK CREAM COLOURED LITTER BIN

SUMMARY

REPORT · pages 4 - 9

Benito Days, a three-day event that paves the way for the whole year
A sustainable logistics centre with its own technology
Bicibus: the great little mobility project



TRENDS · pages 10 - 13

ReBnew comes to children's playground equipment
Other ways of getting around
Lighting up where it's necessary and only when it's necessary



INNOVATION · pages 14 - 17

Investing in innovation to improve the future



COLLABORATION · pages 18 - 19

It's not a piece of recreational equipment, nor a slide, nor a piece of furniture... It's the VORA
Adapting light to efficiency and safety



PROJECTS · pages 20 - 54

Lighting Projects
Urban Projects
Mobility Projects
Playground Projects
Global Projects



COVERS · page 55

Covers and grilles, the origin
Fire hydrants, the new product





The path has been paved to ensure we remain at the forefront of the Spanish market as the company capable of manufacturing everything that is required for public roads, while always bearing people in mind.



ANDREA CARANDELL
CHIEF EXECUTIVE OFFICER

The first six months of 2023 have seen Benito give the definitive boost to the new range of mobility to add to the four existing categories: Lighting, Street Furniture, Children's Playgrounds and Covers and Grilles. An assessment of all the projects executed in this first year reveals how and exactly how hard we have been working. In the wake of the Company's 30th anniversary, we are focusing on the future with solvency and new ideas. This second issue of our Magazine provides a summary of this work.

We began the year by celebrating 'Benito Days', a three-day initiative consisting of internal training sessions and workshops held with a view to focusing on a year that, in Spain, has coincided with general elections, and in which changes are

expected to occur throughout Europe with regard to getting around, particularly in cities, due to the consequences of the climate emergency. These workshops laid the foundations for a number of innovative projects, the most noteworthy of which are: enhanced Apolo spotlights and Tomsik light fixtures featuring remote management solutions, new designs for a collection of multi-coloured benches and litter bins, and the first playground equipment installed with the material known as Rebnew, made from recycled plastic...

We have been working together with other entities and architects on extremely interesting projects such as the construction of the Vora playground structure installed in school grounds and the street furniture project in Mar Bella, with the

landscape designer Martí Franch, both of which are in Barcelona. Moreover, we are also involved in the modernisation of football pitch floodlights and in the construction and the provision of guidance on safe bicycle parks.

In the field of exports, we have continued to consolidate our presence in countries including Italy and France and we have opened up new markets, thereby expanding this area of business. The path has been paved to ensure we remain at the forefront of the Spanish market for the manufacture of everything required for public roads, while providing services to people and bearing them in mind. □

BENITO DAYS, THREE DAYS FULL OF IDEAS AND INNOVATION

The January workshops served to disclose the Company's new line of catalogues and tools and all the year's new products



LIGHTING TRAINING AT BENITO DAYS

Listening, asking questions, answering them and contributing. The three days of the first edition of Benito Days, held in January, were based on this premise. More than a hundred people attended this internal event geared to disclosing all the ongoing innovative work carried out by the Company's different departments, as well as to provide training on the new ranges of products.

The first day, dedicated to street furniture and new forms of mobility, placed an emphasis on the Company's ability to manufacture products with materials such as wood and cast iron, thereby ensuring a long service life. On the other hand,

the benefits of ReBnew, 100% recycled and recyclable plastic, were also highlighted. This material is not affected by water, is unbreakable and requires no maintenance.

Sustainable mobility is gradually turning into a new range of products. From products designed to enhance bicycle paths and safe

Andrea Carandell:
"Levels of knowledge at Benito are extremely high. We ensure projects emerge"



bicycle parks were in evidence at the event. Other elements that are essential for low-emission urban areas to operate smoothly are automatic bollards with a top light and an automatic control system.

LISTENING, RESPONDING AND CONTRIBUTING

The exchange of knowledge has enabled us to offer clients a comprehensive service from the inception to the completion of a project

The Lighting department presented the lighting projects they have been developing, designed to guarantee energy savings of up to 75%, as well as the innovative system for programming light fixtures and preventing excessive amounts of light that might harm the health of both people and wildlife in each location.

The changes to LED lighting in soccer fields, stadiums and sports venues were highlighted, with the system developed by the company OnField.

On the last day, digital tools were made available to those in attendance to disclose the projects and



GRAPHIC MATERIAL FOR ALL SALES REPS

to make use of the 3D Plan platform designed to enable clients to test their own designs.

Finally, Andrea Carandell concluded by stating that "levels of knowledge

are extremely high at Benito. We ensure projects emerge". This was all too clear to see at Benito Days.. □



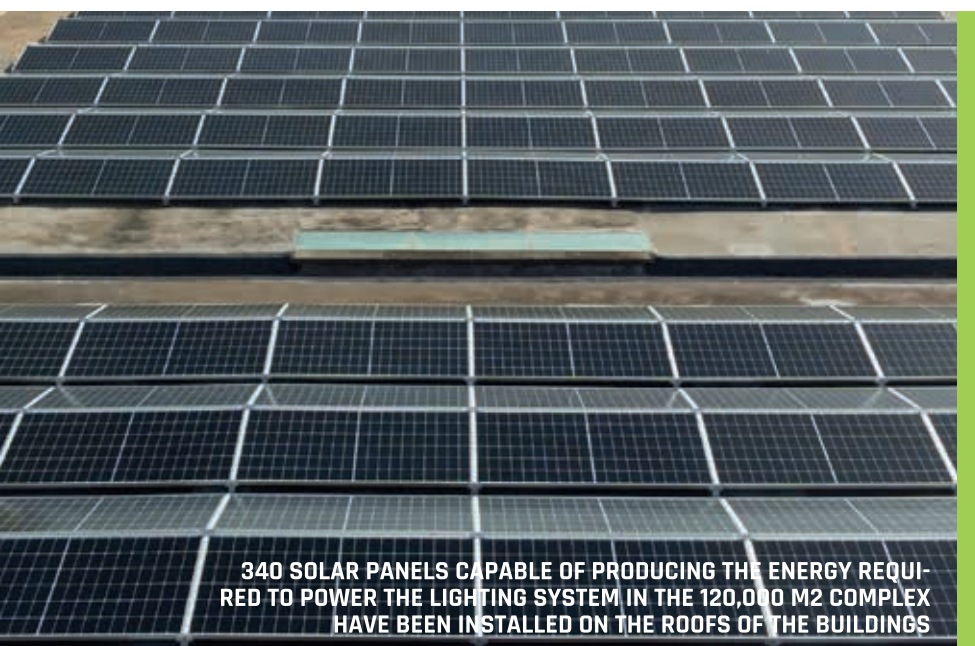
**ASK US
FOR PRINTED
BROCHURES!**



BENITO URBAN USES PART OF THE INDUSTRIAL COMPLEX TO PROVIDE LOGISTICS SERVICES TO THIRD PARTIES

A TECHNOLOGY-DRIVEN SMART AND SUSTAINABLE LOGISTICS CENTRE

The lighting of BENITO's 120,000 m² logistics center is powered by solar energy.
LED projectors reduce consumption



340 SOLAR PANELS CAPABLE OF PRODUCING THE ENERGY REQUIRED TO POWER THE LIGHTING SYSTEM IN THE 120,000 M² COMPLEX HAVE BEEN INSTALLED ON THE ROOFS OF THE BUILDINGS

The logistics sector, which is booming, accounts for 30% of total energy consumption in Spain. It is, therefore, a candidate for improving energy efficiency if the European requirements of Agenda 30 are to be met. BENITO has four of its own head offices, two of which are logistics centres. An energy efficiency project has just been completed at the 120,000 m² Sant Bartomeu unit, the results of which have been exceptional, including the use of advanced technology in the complex's lighting system.

The finished product warehouses, in which there is an additional manufacturing area, are old.

They used to belong to a textile company. This is a very open, translucent facility with a number of columns that hinder the work being carried out. Moreover, these buildings had a scarcity of light coming through the roof. The first change was to open skylights in the roof, which let in natural light.

340 solar panels have been installed on the roofs of the buildings, enough to power part of the logistics centre's lighting system

However, the main project consisted of two joint initiatives: the installation of self-consumption photovoltaic panels and the design of a single centrally controlled system of various lighting networks, OnField, developed by the company's lighting department and which has been used in projects executed for Benito's clients all over the world. A touch screen with a map of the areas inside the building is used to



turn the lights on and off in accordance with their use. The map ends up being the monitoring button panel. With regard to solar power, a total of 340 self-consumptions panels of 380 Wp each have been installed, equal to a nominal power of 100 kWp and sufficient to meet the plant's needs. An annual photovoltaic production of 150,775 kWh is planned, which represents annual savings of 94.32 tons of CO₂ and 12.96 tons of



UFO SPOTLIGHTS AT THE SANT BARTOMEU DEL GRAU PLANT

The OnField system, designed and developed by BENITO, enables lighting to be regulated intelligently to maximise savings

oil equivalent. The Company's senior management believes that the investment will be recovered in 5 to 7 years, but this predication has improved. "We have self-consumed 9,568 MWh in two weeks, while we used to consume 25,414 MWh in the same period of time", they explain. Actual self-consumption was 38% compared to the forecast of 34%. □

BICIBUS: A GREAT LITTLE MOBILITY PROJECT

BENITO works together with the platform that designed the Bicibus, the purpose of which is to improve urban infrastructure for the continuous use of bicycles

The bicibus project began 3 years ago and this model has already been exported to numerous Spanish cities and has given rise to replica models abroad. In Catalonia, it has already been implemented in 30 towns, 78 educational centres participate and more than 117 bicibus lines have been installed. The initiative consists of children going to school by bicycle on a safe circuit accompanied by their parents or teachers one day a week, usually on Fridays. This action is conducted as part of a course, whereby the students become familiar with the route and then go on their own from the age of 10 or 11. The motto of the initiative is that cities should be healthy for everyone, regardless of whether they are 8 or 80 years old, thereby benefitting all citizens.

The platform responsible for designing the bicibus is called Chain of Changes (Cambios en Cadena). The

Cities should be healthy for every citizen, regardless of whether he is 8 or 80 years old. This is the philosophy for riding bicycles

name arises from the fact that the aim "is to achieve this chain of changes throughout society, turning the bicycle into the means of transport for both exercising at the weekend and for going to work, school, shopping, etc.". 2,007 children and 1,772 adults have already registered on the bicibus management APP.

The platform, through BENITO, gets in touch with institutions to advise them on their bicycle lane networks and their mobility plans. One of the recommendations is that they install safe bicycle racks.



BICIBUS IN BARCELONA



BICYCLE LANE IN VIC

THE PERFECT PARTNER FOR PEOPLE THAT COMBINE CYCLING AND SUSTAINABILITY

BENITO is the perfect partner for municipalities that believe in cycling and sustainability. Bicycle lane dividers and markings, optimal signage to prevent collisions, flexible bollards to guarantee cyclists' safety and parking spaces to ensure they never lose their bike. It is important for BENITO to continue participating in this change, creating new designs based on needs and manufacturing products geared to improving people's health and lives.

"Without them, people are not going to go out on their bicycle because they're afraid it will be stolen". This initiative, acknowledged by the United Nations in 2022, demonstrates that important changes can be made in society when working together. □



ECO-FRIENDLY AND MAINTENANCE-FREE CHILDREN'S PLAYGROUND

ReBnew, BENITO's 100% recycled and recyclable patented material, now used in children's playground equipment

The use of materials made from recycled plastic is the order of the day. Every initiative to reduce the presence of plastic in our lives counts. Facing reality is tough and there is currently more single-use plastic waste than ever before: an additional 6 million metric tons, equivalent to almost one kilo for every person on the planet.

Benito began working with recycled plastic in 2018. Containers disposed of in yellow bins were transfor-



med into a compact plank-shaped block to make a bench. It looked like a plank of wood, but it was actually made from recycled plastic.

This was the first step. This new material, named ReBnew, won the Barcelona Provincial Council tender to install 6,087 benches in different towns in the province. Five years have gone by and the benches are still in excellent condition.

The first projects for children's playground equipment in the Play range manufactured in ReBnew began to be implemented in the first half of 2023, becoming the first company in the sector to do so. A collection has been created by adding colour and combining it with a touch of austere design. Its biggest advantage is undoubtedly durability, the certainty that it will not require any maintenance and that it is as safe as any other product.

If society has advanced at all, it is in the inclusion of everyone in public spaces. Considerable efforts have been made in the field of play-



MODULAR PLAYGROUND EQUIPMENT INSTALLED IN SEGOVIA

ground equipment and technical solutions are available to overcome any type of difficulty. This range of equipment features spring ri-

ders and seesaws, slides, swings, dynamic recreational structures, three-dimensional nets and safety flooring, among others, which

comply with the requirements of both governmental authorities and Afamour (Spanish Association of Manufacturers of Urban Furniture and Children's Playgrounds).

The technology is on the market and a single project features all the sensibilities and elements required

The result is a universal, inclusive design using clean material with no wear and tear

to achieve a universal design that makes no distinction between people, and is really inclusive, with a variety of playground experiences and challenges.

The result is playgrounds suited to everyone, making use of a material, recycled plastic, which is already part of the circular economy system. □

The collection has grown in 2023



The Citizen bench was the first product in a collection designed by Eugeni Quitllet.



The ReBnew Gea litter bin is a combination of a unique, modern design and the robustness of the material.



ReBnew tree pits can be easily cut to adapt them to the space in question.

OTHER WAYS OF GETTING AROUND

Changing mobility means using your car less. Bicycles are the order of the day, and with them comes the need for safe riding and parking

The Law on Climate Change and Energy Transition approved by Congress aims to reduce CO2 emissions by at least 23% by 2030 compared to 1990 levels. To achieve this, the Recovery, Transformation and Resilience Plan (PRTR by its acronym in Spanish) has been launched with a budget of 1,500 million euros, 500 million euros of which is from European funds, with the aim of digitising and decarbonising urban mobility.

This gives rise to the possibility of financing projects associated with changes in trends related to ways of getting around. The bicycle is regaining ground, as are scooters, a form of transport that, despite not being subject to any definitive regulations, is on the streets. The intermodality between public



BICYCLE LANE
IN BARCELONA

transport and the bicycle will prevail, allowing for the connection of bicycle lanes with interchanges, railway and bus stations connected to educational, health and sports facilities and shopping centres.

To this end, our streets will need to be fitted with equipment such as bollards, including reflective, flexi-

ble and automatic models, bicycle lane dividers, speed bumps, adapted lighting and safe bicycle racks. The range is wide, from 5 spaces and with the possibility of dual electronic locking device controlled from a mobile phone application such as the BENITO BIKE APP, which is already available. There is no looking back. □

BENITO BIKE
APP



¡AVAILABLE NOW!

BENITO BICYCLE PARKS PROVIDE TOTAL SECURITY



SECURE SCOOTERS

Scooters are another alternative in new mobility trends. They, like bicycles, need a secure place. These individual boxes with an electronic keyboard-operated locking system and with the possibility of installing a charging point are the solution.



LIGHTING UP WHERE IT'S NECESSARY AND ONLY WHEN IT'S NECESSARY

We are not only striving for efficient lighting solutions through the use of LEDs, but also by reducing light pollution in the night sky and implementing healthy, safe improvements

The concept of lighting is changing. Streets and public spaces in Spain must be lit up pursuant to the law. However, this does not mean that streetlights have to be on all night. New technologies enable the different times of the day to be adapted to the appropriate amount of light, as well as every area of a town or city. This is one of the trends in the lighting sector.

Moreover, there are new challenges, one of which is to reduce light pollution in the night sky. Another is to preserve the health of both the people and wildlife inhabiting each area, preventing it from disappearing. In this regard, the Tunnable White system has been developed, the technology that best imitates natural light. When turned on, this system operates with white light – colder light – and

We at BENITO
innovate in energy
efficiency on a
continuous basis

as time goes by it changes to yellow light – warmer light – so as not to bother you.

Going a step further in relation to automation, this system can be implemented with motion sensors designed to turn the light on or off in accordance with the movement detected. As Albert de Ramos, head of the Lighting Department at Benito, explains, "we are on the right path. There is room for improvement and savings by basing the efficiency of the systems and the control thereof on lighting up where it's necessary and only when it's necessary". □



ZEBRA LIGHT FIXTURE MOTION SENSORS ACTIVATE THE LIGHTING WHEN PEDESTRIANS PASS BY

KEYS TO GOOD LIGHTING

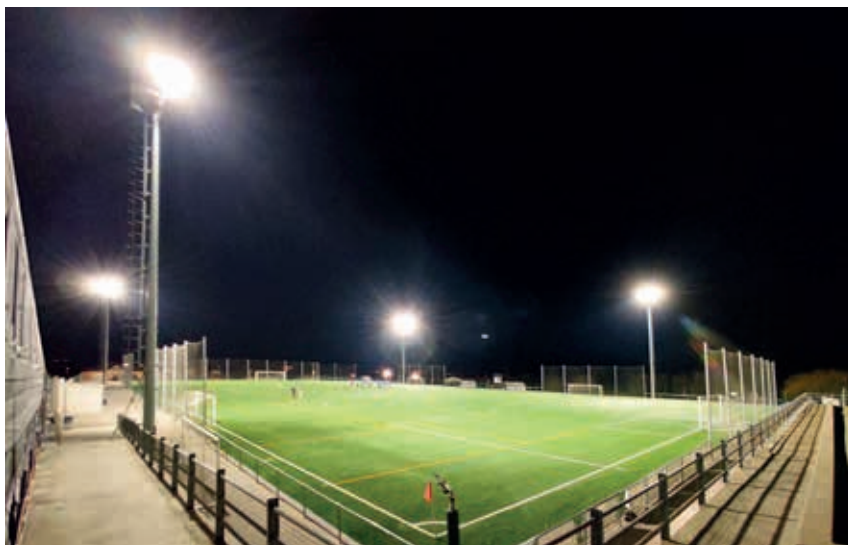
1. The use of efficient technology such as high-energy efficiency LEDs, as they consume less energy and have a longer lifespan.
2. Directing the light where it is needed, avoiding dispersion and, therefore, light pollution. The use of proper optics.
3. Appropriate colour temperature. Warm lights to create a pleasant atmosphere and to prevent glare and white lights to improve safety.
4. Control and automation systems with sensors that allow the light to be turned on and off in accordance with the movement detected.

INVESTING IN INNOVATION TO IMPROVE THE FUTURE

The latest developments in outdoor lighting produced by our team of experts

APOLO SPORT FLOODLIGHT

The floodlight par excellence for lighting up sports facilities. Thanks to the improvements implemented, this solution is now **lighter, more efficient and easier to install**.



TOMSK R STREET LAMP

Featuring a minimalist design, this street lamp is based on the successful Tomsk model and consists of an LED module with flow recovery. **It can be installed on a cylindrical or rectangular column, or on a facade.**



CICLO STREET LAMP

This street lamp is characterised by a simple, minimalist and non-invasive aesthetic language. One of its biggest advantages is the possibility of combining **up to six spotlights in both axes in a completely personalised manner**.



CIRCULAR LITTER BIN

BENITO has redesigned this classic piece of equipment by adding a **triple reinforcement in the form of a 75-mm wide strip of ribbing in the central section**. This new feature, which has no welding, provides one of the best-selling litter bins on the market with additional strength.



RAMBLA BOLLARD

The Rambla automatic telescopic bollard comes with a remote control system and a red/green LED light ring. In addition, **it is highly reflective due to its embossed textured finish**.



MAR DELINEATOR POST

With its minimalist and functional aesthetics, the Mar beacon is ideal for peri-urban environments, roundabouts and parks. **The use of oversized materials and an anchoring system give it additional durability and resistance**, in addition to being highly efficient due to the properties of its LED module.



FIRE HYDRANTS

BENITO has added **a new line of products to its portfolio: hydrants**. Both the dry column and underground models can be used to connect hoses or to fill the fire brigade's water tanks in the event of a fire.

INNOVATION



MIELEK LITTER BIN & MINSK BENCH

Olive

Marson

Cream

Bordeaux



COLOUR COLLECTION

BENITO has transferred **the improvements in visual comfort implemented in interior decoration to the street**. Its Colour collection includes the Minsk bench and the Minsk or Mielek litter bin, in accordance with the customer's needs with regard to size, in various colours: bordeaux, cream and olive.

MINSK BENCH

Developed internally by BRC Design, the Minsk bench stands out for its sober and minimalist design. However, its minimally invasive aesthetics hide a **significant robustness, as it features a ductile cast iron enclosure around its five wooden slats.**



REBNEW COLLECTION

BENITO is expanding its collection of recycled furniture by replacing pine wood with ReBnew, a maintenance-free material, in some of the Company's most emblematic benches, planters, bins and fences.



REB LINE

BENITO has decided to go one step beyond in their commitment to the environment, creating **a line of playground equipment made entirely of ReBnew recycled material.** This includes all kinds of equipment: slides, swings, spring riders and seesaws, multi-purpose units, etc., which are more robust and require no maintenance due to being made of recycled plastic.



BERNA LINE

This line presents inclusive and challenging proposals, so that all children can have fun. In addition, the elements that make it up are **100% produced with high-quality materials developed following sustainability criteria.**



IT'S NOT A RECREATIONAL STRUCTURE, IT'S NOT A SLIDE... IT'S THE VORA

BENITO has manufactured a piece of equipment aimed at pacifying the city, designed by the Elisava school and promoted by the Barcelona City Council

The new piece of street furniture known as Vora has been installed in front of the Estel school in the Sant Andreu district of Barcelona. This structure, designed in the form of a modular grandstand, is made up of two large sloping pieces of wood with spaces in which to sit, hide and climb on one side, while the rear side rests on planters located at two different heights.

This piece of furniture, in addition to providing a form of entertainment and serving as a play area, acts as a barrier for passers-by between the space itself and the vehicle thoroughfare. It emerged as a pilot project in 2020 within the

framework of the European urban mobility initiative 'Furnish Kids'. It was designed by a team of Elisava researchers led by Roger Páez and Toni Montes, who have their own

definition of Vora: 'It's a project that can't be classified. It's not a climbing frame, it's not a slide, it's not a children's recreational structure, it's actually all that in one. Moreo-



ADAPTING LIGHT TO EFFICIENCY AND SAFETY



CHILDREN PLAYING IN THE VORA INSTALLED IN FRONT OF THE ESTEL SCHOOL

ver, it can be used in different ways by replacing some of its parts”.

A few months ago, the Barcelona City Council decided to promote the facility at other schools as part of the 'We protect schools' campaign, thereby helping to equip the pacified spaces springing up around the city. The philosophy is to make both children and adults feel comfortable all over the city”.

The City Council has emphasised the fact that, although the initiative is public, “there are research hubs such as Elisava and industrialists such as Benito that are aware that this transition is inevitable”.

The school’s educational community has asked for the Vora to be left where it is as it is a new meeting place and the children have made it their own, and the City Council has agreed. The Vora is here to stay. □



LIGHTING PLANNED WITH NO MOTION SENSORS



LIGHTING PLANNED WITH MOTION SENSORS

BENITO took part in the project consisting of the new intelligent lighting system installed in Parc del Molinet in Santa Coloma de Gramanet. As a manufacturer, the Company provided 26 light fixtures for the busiest points. Sensor-controlled lighting has been implemented to meet the aims of safety and coexistence in a public space. The system also respects human health, the park’s own biodiversity and achieves significant reduced consumption and energy savings.

The project arose within the framework of a people-oriented urban laboratory led by the CICAT cluster with members of the Urban Centric Lighting working group. A single system features different colour temperatures, intensity and light levels, as well as instant and autonomous adjustment with no need to communicate with a central control system. □

A TEAM OF EXPERTS AT THE SERVICE OF OUR CUSTOMERS

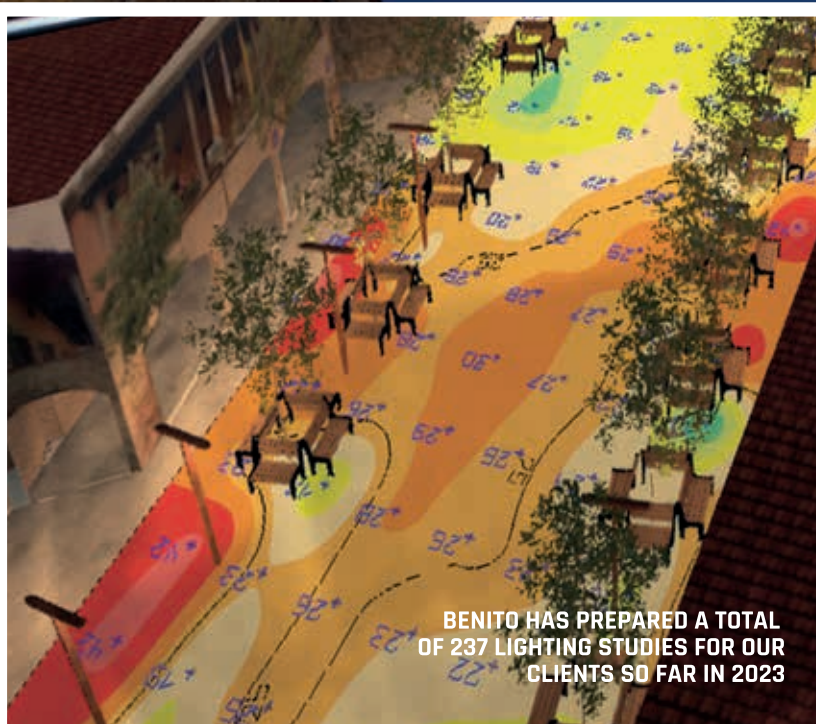
We work together with architects, lighting designers and landscape artists, thereby ensuring our projects comply with the current requirements and regulations in force and, at the same time, are lit up on a human scale.

We are familiar with the effect of lighting on the comfort and health of living beings.

Aware of the responsibility involved in planning a lighting project, we at BENITO take every variable into account, thus guaranteeing that each and every project adapts to the needs and regulations of the environment in question.

Our team of experts, composed of engineers and lighting designers, conducts an in-depth analysis of the needs of each project in order to propose the ideal solution, always relying on the reliability and precision of the technology used in our light fixtures, capable of reproducing the lighting study in its finest details, so as not to waste a single lumen.

Do you have a lighting project? Get in touch with us and we will provide you with a lighting study.




REDEVELOPMENT WITH SAVINGS AT THE LA SOLANA FOOTBALL GROUND

The installation of LED floodlights has enhanced the lighting system and the investment will be paid off in three years

A 20 Apolo L C3 spotlights and 4 Apolo L C5 spotlights, adapted to operate with the OnField control system, have been installed at the La Moheda football ground, in the town of La Solana, in Ciudad Real.

The overhaul of the lighting system took the size of the pitch into account, which has hybrid artificial grass and a capacity for 2,000 spectators.

In addition, micro reflector optics were used, thereby mitigating the effects of light pollution.

By switching to LED units and conducting a specific lighting study, energy savings have been 75% on average and the return on investment is estimated at less than four years. 



LA SOLANA FOOTBALL GROUND

MORE EFFICIENT SPORTS FACILITIES IN BANYOLES

The OnField control system and LED spotlights guarantee savings of up to 85%



BANYOLES FOOTBALL GROUND

The Banyoles sports complex, in the province of Gerona, consists of an 11-a-side football pitch and a 7-a-side pitch, where handball is also played, as well as changing rooms, a covered grandstand, an office, and a bar. This facility, located opposite the lake bearing the name of the town, has undergone a complete overhaul of the Miquel Coromina Moretó stadium lighting system.

Taking both the increase in energy costs and environmental issues into account, 28 spotlights have been installed, including the Apolo L 1000W model with C-5000K optics to illuminate an adjacent track at the same time, and the Apolo M model. Power has been reduced from 111.8

kW to 28 kW, 72% less. The spotlights prevent the effects of light pollution, as they are installed facing the ground.

The project features the OnField control system, achieving energy savings of up to 85%. The OnField system bases the intensity of the light on the activity taking place at the time. The economic savings are more than half and the Banyoles Town Council will see a return on this investment in 3.5 years. The change to LED lighting has also been implemented at the old football ground, located in the town centre. 12 Apolo L and 9 Apolo M spotlights have been installed at this facility, which is also equipped with the OnField control system, giving rise to a 71% reduction in the electricity bill. □

TRANSFORMING THE WAZIERS FOOTBALL GROUND IN FRANCE

The town has managed to save around 70% thanks to the ONfield Sports remote management system

Waziers is a French town in the Hauts-de-France region, in the north of the country, with its own football club and ground. This is a Calse II FFF (French Football Federation) ground.

The change in lighting has resulted in the installation of 12 1500 W Apolo XL spotlights and 4 500 W Apolo M spotlights in four 16-metre high towers. The level of light is 200 lux with a degree of uniformity of 0.7, thereby ensuring that dark areas and shadows are not created.

The lighting system features the OnField Sports system, designed to enable you to control when the floodlights should be turned on and at what intensity in accordance with the activity being undertaken at the time. This has resulted in energy savings of 70%. □



WAZIERS FOOTBALL GROUND



'ON ICE' LIGHTING IN FINLAND

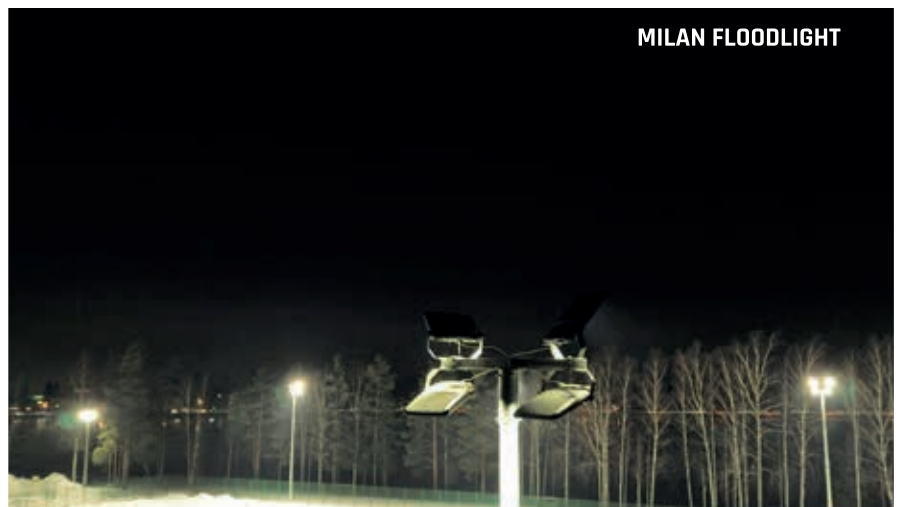
Lighting project for a sports court in Imatra, eastern Finland

Benito has installed 26 Milan XXL 460 W spotlights and 4 Milan XL 250 W spotlights in the town of Imatra, Finland.

This project consists of the installation of a lighting system at the Imatrankoski sports field located alongside the Koski school. School-children and other citizens alike are regulars on this field, which serves as an ice skating rink in the winter and an athletics and basketball facility in the summer, when an artificial grass pitch is installed.

This sports ground opened in October 2021 and the final overhaul was completed in the summer of 2022. The lighting system consists of different optics and versatile ac-

cessories to guarantee operations, taking into account the environmental factors in the area and what the facility is being used for at the time. □



MILAN FLOODLIGHT



NEW STREET LAMPS IN ISRAEL

2,000 street lamps have been installed in the towns of Petah Tikva and Givat Shmuel

Petah Tikva and Givat Shmuel, towns near Tel Aviv, located in the central district of Israel, have chosen to change their lighting systems to LED. To do so, they opted for the Elium and Neovilla models in accordance with the location: avenues and wide streets with high levels of traffic, and small streets and promenades.

2,000 street lamps have been installed to date in the first phase. The change will continue to be implemented over the next two years. Benito also participated in the upgrading of the lighting systems in every train station in the country. □



VIALIA EVO STREET LAMPS



LED LIGHTING IN DOHA, CATAR

Installation of a lighting system in a hotel area

In order to provide a service around the Rizos Gulf Hotel Doha, in Qatar, 126 Vialia Evo light fixtures with 5-metre Ter columns have been installed.

This area is located alongside the sports facilities at which the Football World Cup was held and an Accor Group hotel.

All the products are designed to withstand extreme weather conditions and, in addition, the light fixtures have been designed for the implementation of the remote management system. □


456 PROJECTS TO REPLACE STREET LAMPS IN 6 MONTHS

Street lamps with average savings of 65% in kW in the first year

The Benito Lighting department has developed almost 460 projects to replace street lamps in the first half of 2023, or in other words, more than 58,000 light fixtures have been installed.

The most important thing is that these projects represent average savings in kW of 65% and, therefore, significant economic savings for the municipalities that have decided to install the LED system. In addition, the impact of artificial night light has been reduced, and both light pollution and intrusive light have been minimised. Lliçà d'Amunt and Sant Antoni de Vilamajor, in Catalonia, are among the towns to have implemented these projects.



The goal is to ensure well-lit streets with an efficient system both in terms of energy and costs. Moreover, this model of street lamp features an aerodynamic, resistant shape, with a unique result. 

Photos: Giselida Escrigas



DELINEATOR POSTS ON BARCELONA'S COASTAL RING ROAD

The project was designed to increase levels of security in the area

Dozens of Tomsk model steel delineator posts with LED lighting have been installed along Barcelona's Coastal Ring Road, with light focused on the pavement, thereby providing pedestrians and passing vehicles with a sensation of complete safety while creating eco-friendly and minimally intrusive lighting. □



TOMSK DELINEATOR POSTS



Photos: Melquíades Rodríguez

RGBW MILAN SPOTLIGHTS

LIGHTING UP DON QUIXOTE

RGBW lighting at the Campo de Criptana mills, in Castilla-La Mancha

The way in which Don Quixote saw the windmills in the book 'Don Quixote of La Mancha' is told as follows:

"At this point they discovered thirty or forty windmills in that field, and as soon as Don Quixote saw them, he said to his squire:

— Adventure is guiding our things better than we would like; because you see there, friend Sancho Panza, where thirty or a few more rampaging giants are discovered, with whom I plan to do battle and take the lives of all of them, with whose remains we will begin to enrich; that this is a good war and it is a great service to God to remove such bad seed from the face of the earth.

—What giants? - said Sancho Panza.

— Those you see there," answered his master".

The Molinos Hills, in Campo de Criptana, Ciudad Real, are one of the region's most emblematic tourist attractions. The latest investment by the Government of Castilla-La Mancha consisted of the artistic illumination of the mills that worried the nobleman so much. This work was entrusted to the Benito lighting department, in a project that posed a major technical challenge. 32 Milan XXL 480 W RGBW spotlights were installed together with the OnField control system, capable of illuminating from the white of the windmills to a range featuring purple, red, blue and green. Automatic, scheduled scenes have been imple-

mented and the system is controlled from the Office of Tourism using a tablet and remotely through the 4G network.

The project was far from easy, however, it should be emphasised that we successfully overcame the distance barrier with regard to Bluetooth coverage, a task that everyone saw as being difficult at the beginning. The different mills are more than 90 metres apart.

The result is the spectacular sight of the mill lit up and the rest of the area in darkness. As such, there is no light pollution in an area people visit to enjoy the starlit sky. □





ANDORRA BATHED IN COLOUR

The Epizen shopping centre lit up by RGBW spotlights

The decorative colour lighting on the building housing the Epizen shopping centre in the Principality of Andorra is a fine example of the possible options in ornamental lighting.

Milan XXL spotlights with RGBW technology were installed to light up the facade. This consists of an area of 60,000 m². □



The background image shows a man and a young girl sitting on a modern wooden bench with white metal armrests. To their left is a large, grey, modern litter bin with a white lid. They are in an urban park setting with a metal fence and parked cars in the background.

URBAN PROJECTS

MIELEK LITTER BIN & MINSK BENCH

WE DESIGN FOR A SUSTAINABLE, INCLUSIVE AND PEOPLE-ORIENTED CITY

We have been planning the city of the future for 30 years

Design is a word that has defined BENITO ever since the Company was founded. We have been designing items of street furniture with such renowned names as Rafael Mo-neo, Eugeni Quitllet and Javier Mari-scal for 30 years.

Why? The answer is simple: we are passionate about the product and believe that comfort also entails living in

pleasant environments. And as this is something we worry about in our own home, why not extend it to the urban environment? This is the premise pursuant to which we plan all our designs and on which we base ourselves when assessing urban planners and landscapers for the best furniture for each project.

Our team of designers is also capable of developing the best landscape solutions when the need arises.

OUR ICONIC NEOBARCINO, AS WELL IN THE SUPER-ISLANDS IN BARCELONA

The descendent of the first Barcino in the urban furniture range is still impeccable



NEOBARCINO BENCHES AND CHAIRS

Remaining impeccable over time is amazing. Our Neobarmino model benches and chairs are still some of the most sought-after products in the catalogue.

Before NeoBarcino it was Barcino, which has the honour of being the first bench designed by the company in 1992. It is named after the city of Barcelona, more specifically as a tribute to it, and to the Olympic Games held there the same year.

This model of benches and chairs has been installed on Avenida Diagonal, in Plaza del Sol and in Ciutadella de Barcelona. They have recently been installed in the so-called super-islands or green hubs of Barcelona, delighting passers-by.

This model has been adapted over time, always based on the initial design, and we now have the NeoBarcino Eco model, made from recycled plastic rather than wood. □



NEOBARCINO TABLES AND BENCHES

REBNEW FURNITURE FOR LATVIA

Maintenance-free Ecosens benches and sets of Kuk tables and benches are the products chosen by Ogre, in Latvia

The Latvian town of Ogre has decided to commit to sustainability by choosing products from the ReBnew range to create rest areas in different locations.

First of all, the Ecosens model with steel legs and recycled plastic slats was installed in the local train station to provide travellers with somewhere to sit.

Outside the Lidl supermarket, a landscaped car park has been redesigned with a picnic area equipped with three sets of Kuk tables and benches. This picnic area allows users to take a break after shopping or strolling around.

In both cases, the products in question are made of ReBnew recycled plastic, which is maintenance-free and resistant to any adverse weather conditions and humidity. The material used comes from 231 kilos of recycled yellow bin plastic. □



KUK TABLES AND BENCHES







ELA MAD BENCHES

A HAVEN OF PEACE IN ROME

A magnificent set of Ela benches in the Italian capital

Rome has been known as Urbs Aeterna, or the Eternal City, since ancient history. Rome is the beginning of a civilisation and an empire that occupied much of Europe. Now, although it is an in-

credibly busy city, it still has parks and spots away from the noise.

A set of Ela benches has been installed in one of these areas, made of water-repellent reinforced moulded concrete with a matte stainless steel

structure anchored to the ground. In addition, these benches feature wooden slats and backrests to ensure greater comfort when sitting and enjoying the peace and quiet of the surroundings. □

SITTING IN BLUE

Goteborg benches in the vicinity of Paris

Nanterre is a town with an important financial centre, as it is home to part of the Défense district, located on the northwest extension of the Champs-Élysées in Paris. Benito has installed 33 of its blue Goteborg benches in one of the area's parks. They are ideal for landscaped areas and, in this case, give the park a touch of colour. □

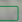


GOTEBORG BENCH

ORGANISING BINS

Santa Cristina de Aro has installed personalised bin covers

Santa Cristina de Aro, on the Costa Brava, has implemented the selective collection system. This means that every street has an area containing bins in which residents are required to leave their waste depending on the day of the week in accordance with a schedule drawn up by the town council.

To cover them, we have chosen a solution consisting of personalised cabinets equipped with a magnetic door system to prevent animals from opening them or due to weather conditions. In addition, old images of the town have been chosen to make them more attractive. 



THE MANUFACTURER, A KEY COMPONENT IN THE PLANNING OF BICYCLE LANE EQUIPMENT

Bicycle lanes won't work without the appropriate guidance

Mobility is changing and the use of the bicycle is growing. Planning a bicycle lane project involves taking a series of variables into account to ensure safety and functionality. It must be equipped with delineator posts, be set well apart from motorised traffic, be well signed, have the necessary lighting, be continuous and have a good network of bicycle racks, etc.

WE at BENITO manufacture all the different components for this type of equipment. As manufacturers, we are an essential part of the processes involved in developing a project. In addition, we work in partnership with the entity "Cambios en Cadena", capable of implementing mobility plans focused on the use of bicycles, when required. ☐



FOLLOWING IN THE STEPS OF THE NETHERLANDS

The Netherlands and its capital, Amsterdam, are the prime example of the use of the bicycle. The city has almost 900,000 bicycles for a population of close to 882,000 inhabitants. They recently opened an underground bicycle park nine metres below the surface with room for 7,000 bikes. Achieving this level, bridging the gap, is the goal Europe has set. Will it be possible? The path has been laid.



MOBILITY PROJECTS

GOTA BICYCLE LANE
DIVIDERS

KILOMETRES MORE BICYCLE LANES IN REUS

Reus promotes sustainable mobility with
Gota bicycle lane dividers

Reus has over 20 kilometres of bicycle lanes and the network continues to expand with projects involving connecting the city with Tarragona. Many of them are in the city centre and on streets where the speed limit is 30 kilometres per hour, however new bicycle lanes have also been implemented on the roads entering the city from east to west and from north to south.

Benito has installed the dividers along the entire length of Avenida Sant Bernat Calbó and work is still underway on calle Falset, Avenida Salou, camí de Bellisens and calle Astorga. All these projects involved public tenders for bicycle lane dividers and there are also plans to install bicycle racks at different points on these roads. □

**BENITO
BICYCLE APP
QR CODE**



¡AVAILABLE NOW!

SECURE BICYCLE RACK IN GIRONA

LARGE-SCALE BICYCLE RACK IN GIRONA

This is a flexible structure located next to the railway and bus stations

Railway stations and secure bicycle racks will be forever associated. The latter allows for a real change in the way of getting around cities.

Gerona is installing a bicycle rack at the TAV station, the bus station and near the Renfe train station. More specifically, a bicycle park with a capacity of 70 bicycles has been installed in the Central Park. Manufactured in a metal structure based on colourful laminated profiles, it is designed to be flexible and can be expanded or downsized, and even moved to another location in the future if necessary.

It consists of a dual-level area with room for 60 bicycles and another area for 10 bicycles of a special width or size. It also features 12 lockers, a self-repair point with tools and an area for dealing with bicycle-related

issues. It will operate through a mobile application in the near future, subject to prior registration. Control is very important, as you can monitor occupancy and activities in real time using security cameras, as well as lighting with motion detectors.

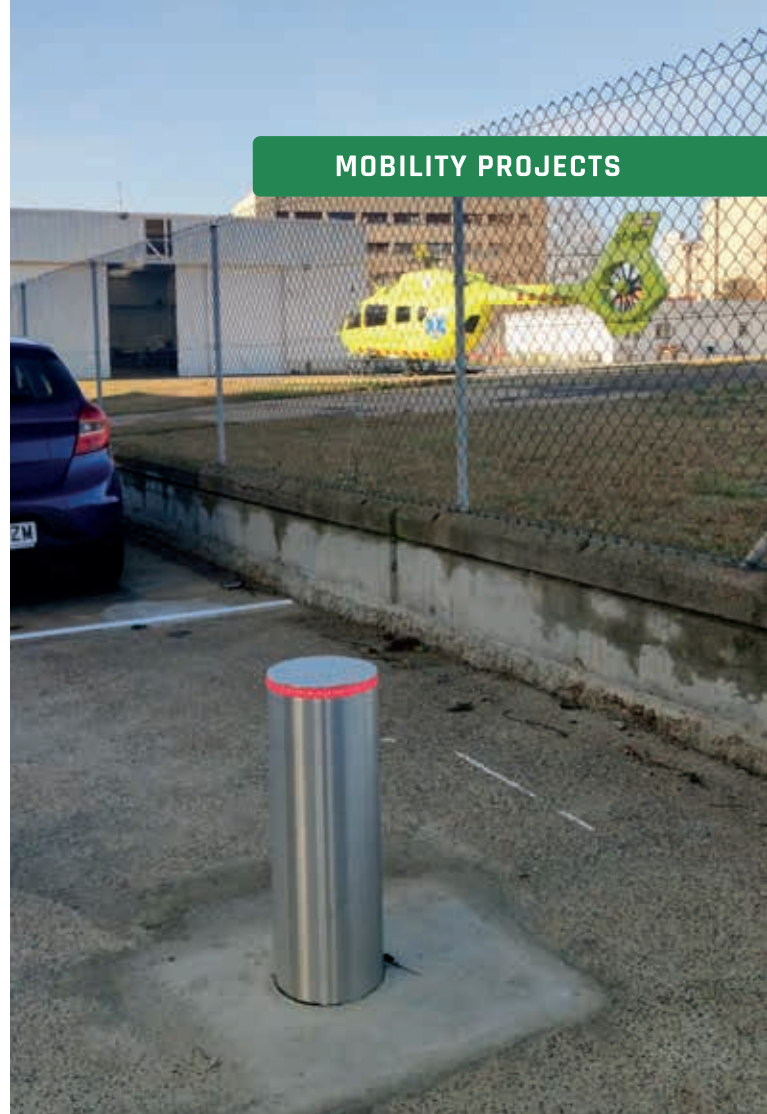
All these features help prevent bicycle theft, one of the biggest concerns for users. □



AS GOOD AS IT GETS: HIGH-SECURITY BOLLARDS

Automatic remote controlled bollards have been installed in the surroundings of Parc Taulí Hospital in Sabadell and the historic old town of Sant Antoni in Ibiza

Automatic telescopic bollards with LED lighting guarantee maximum security wherever they are installed. In Sabadell, automatic system bollards have been installed around Parc Taulí Hospital to allow vehicles with a permit to come and go. These bollards are made of stainless steel and are equipped with a crown with a red and green LED signal to indicate whether a vehicle can pass or not.



MOBILITY PROJECTS



AUTOMATIC BOLLARDS

Moreover, 36 automatic bollards and 24 fixed bollards have been installed in Ibiza to control access to the town centre of Sant Antoni. More specifically, they are located on calles Vara del Rey, Sant Antoni, Ample, Rossel, Ignasi Riquer, Santa Agnès, Bisbe Torres, Bisbe Cardona, in the church square and on Passeig de Ses Fonts. In this case, the town council defines the opening and closing times in accordance with the needs of service vehicles. □

THE KEYS TO A SUCCESSFUL CHILDREN'S PLAYGROUND

Children's playgrounds must be based on a universal design that takes the needs of the project into account beforehand

Benito, an active member of AFA-MOUR, promotes the importance of designing inclusive and accessible recreational areas. The Company's product and project design department places a priority on functionality, aesthetics, durability, cost, adaptation to the environment and sustainability. Accessibility is essential, creating children's recreational areas where everyone, regardless of their abilities, can enjoy themselves to the full. Inclusivity is achieved by providing a wide variety of recreational experiences

to ensure everyone feels at home. In addition to traditional equipment, trafficable flooring made of absorbent material, architectural solutions to create shady areas and other items of furniture are also installed.

From design to installation, high standards of safety are maintained, with the aim of creating recreational areas geared to reinforcing the importance of inclusion in the community.

**CHILDREN'S PLAYGROUND WITH THE PINT MODULAR STRUCTURE
IN THE PROVINCE OF TARRAGONA**

ALCALÁ DE HENARES COMMITS TO ROBINIA WOOD IN ONE OF ITS MOST ICONIC SQUARES

The town joins the quest for sustainability through the use of natural materials such as Robinia wood for the new leisure area in Plaza del Barro

The new children's leisure area in Plaza del Barro, located in district II of Alcalá de Henares, was opened to the public in late February. 50 years ago, this iconic spot was an open field, and the initiatives of local residents have turned it into a place for meeting up and celebrating.

The Comprehensive Park and Garden Redevelopment Plan promoted

by the municipal Government team has resulted in an investment in Alcalá de Henares of almost 500,000 euros for the complete redevelopment of the square, in "a clear commitment to the enhancement of these spaces geared to neighbourly coexistence", in the words of the mayor, Javier Rodríguez Palacios.

Redevelopment work has been carried out in four areas, both

in the square and in the surrounding streets. One of the most notable changes involved the expansion of the playground, which has doubled in size.

This project has given rise to the creation of two recreational areas with equipment made of robinia wood for different users, depending on whether they are under or over 6 years of age. □



ROY LINE MODULAR RECREATIONAL STRUCTURES

REDEVELOPMENT OF 7 RECREATIONAL AREAS IN VIC

The town of Vic, in the province of Barcelona, has allocated € 250,000 to the redevelopment of some of its parks

Of the almost 50 parks in the town of Vic, the first to be redeveloped were Divina Pastora, Somoto, Pascual Blanca, Sant Jaume, Nadal, Estación and Passeig Pep Ventura.

To this end, Vic Town Council has invested € 250,000 in the rehabilitation and repair of different recreational areas. This amount has been divided into three categories of improvements: paving, fencing and recreational equipment.

The aim of this initiative was to implement products executed with more sustainable materials such as robinia wood, which gives the areas a natural appearance, as well as improving levels of safety. In relation to this last point, flooring made of rubber, sand or tree bark has been added to ensure falls are well cushioned.



RECREATIONAL STRUCTURES MADE OF ROBINIA WOOD

The fences have also been replaced to facilitate access for all types of people, regardless of their degree of mobility. Vic has allocated a total of 350,000 euros to the creation and redevelopment of children's playgrounds in the last two years. And this is just the beginning. □

This is ideal for people who think that teaching goes beyond recreational activities themselves, who want children to be taught to respect nature, as well as those who are simply striving to add an artisanal touch to their projects.

PLAYGROUND PROJECTS



ROY BOAT



BALANCE CIRCUIT



ROY MULTI-PURPOSE
RECREATIONAL STRUCTURE



100% SUSTAINABLE RECREATIONAL EQUIPMENT IN ULLASTRET

Ullastret is the first town in Spain to invest in the Reb line

Known for its historic Iberian city, the town of Ullastret, in the province of Girona, is the first in the country to have installed an area with recreational equipment made of ReBnew, a 100% recycled and recyclable plastic.

One of the town council's main requirements was that the material used did not need any type of maintenance, due to it being a small town with a small municipal workforce. Hence, all the equipment selected – swings, spring riders and multi-purpose structures – is from the Reb line, designed in line with eco-design and open playability criteria.

Citizen Eco model benches made with the same recycled polymer as the recreational equipment have been added to complete the facility. ☐





ALU TOWER, CUAT NET AND MER MERRY-GO-ROUND

VINARÓZ CONCLUDES THE REDEVELOPMENT WORK ON THE PLAZA DE ESPAÑA CHILDREN'S PLAYGROUND

The work consisted of replacing the recreational equipment and the paving

The Vinaroz Town Council, in the province of Castellón, has concluded the redevelopment of the children's playground in Plaza de España, the biggest in the municipality.

This work consisted of the replacement of the playground equipment, which was in poor condition, with new elements: a large-format tower with three slides at different heights, a climbing net and a merry-go-round adapted for the enjoyment of all children, including those with reduced mobility.

This was a very important investment for the town council, and Carmen Morellà, the town councillor for Works and Services, explains that it was decided to allocate the Provincial Government's grant for the Castellón Avanza plan to this project. □





SANT FELIU DE GUÍXOLS REDEVELOPS THREE OF ITS CHILDREN'S PLAYGROUNDS

The coastal town has begun redeveloping its children's leisure areas

Last year, the coastal town of Sant Feliu de Guíxols, Girona, undertook the total redevelopment of three children's playgrounds, the work having been concluded in January. The town council decided on large-scale equipment in order to give each playground its own identity and inclusive equipment has been added to all three playgrounds to guarantee the enjoyment of every single child.

Natural materials with neutral tones such as robinia wood were chosen for the Plaça de la Llibertat area. The most noteworthy of the products installed include the balance circuits, as well as the spring riders and rustic seesaws.

On the other hand, the Passeig del Mar and l'Avinguda Canàries areas stand out for their bright colours, especially when it comes to the rubber flooring. As for the recreational equi-

ment, the former features a boat with platforms, slides and nets designed for children to exercise their different motor skills, while the latter has a maintenance-free aluminium structure with several slides. Both have swings, spring riders and seesaws to maximise playability.

Items of furniture such as benches, litter bins and water fountains have also been installed. □



SEAFRONT THEME PARK
IN SANT FEU DE GUÍXOLS



PLAYGROUND PROJECTS

BALANCE EQUIPMENT IN ROBINIA WOOD



ARTIC LINE AND ALU LINE MODULAR PLAY STRUCTURES





ROBINIA WOOD PLAYGROUND EQUIPMENT IN THE TOWN OF CANILLO

NEW ROBINIA PLAYGROUND IN ANDORRA

The town of Canillo has installed several handcrafted structures made of robinia wood

Regarded as the peak of Andorra, the parish of Canillo is the biggest in the principality. Benito has installed colourful rubber flooring and various items of recreational equipment in the eponymous capital, which serves as the gateway to the Granvalira ski resort.

This equipment includes booths with slides, spring riders, seesaws, swings and a balance circuit. Everything is made of robinia wood, a noble, highly resistant, maintenance-free material. In addition, this material is 100% natural and, as such, blends in perfectly with the mountainous surroundings of Canillo. □



DISTRICT 6 IN BUCHAREST INSTALLS A SKATE PARK AND AN AGILITY CIRCUIT

Once again, the Romanian city has entrusted Benito with the construction of a new skateboarding facility and an area for dogs

A 1,154 m² plot of land has been developed at the intersection between Timisoara Boulevard, one of the busiest in the country, and Leaota Street, in district 6 in the city of Bucharest.

This piece of land was in poor condition and was an inconvenience to citizens passing through the area. An investment of almost 200,000 euros has been used in the installation of a skate park for the enjoyment of children not interested in traditional team sports and a dog park that serves as a meeting place for pet owners. In addition, around 400 m² have been allocated to the creation of green spaces. □



OPEN-AIR FITNESS IN QUALIANO

The Italian town has benefitted from funds granted by the Naples City Council to execute the project



This town in the metropolitan area of Naples has had to wait 8 years for the pleasure of an outdoor space dedicated to sporting activities. The result is a meeting point for people of all ages and different capabilities wishing to engage in different sports in a safe and healthy manner. □



GOING THROUGH THE 5 RANGES

Comprehensive projects are the order of the day. Five ranges have been installed in the same area: light fixtures, urban furniture, mobility equipment, recreational equipment and covers and grilles

Supplying four consolidated product ranges such as lighting, street furniture, children's recreational equipment, and covers and grilles enables Benito to offer all the products for many of the urban facilities undergoing redevelopment. When the project involves the rehabilitation or the creation of a new square or park, equipment from different ranges is often needed.

With the impetus of new mobility, for which a fifth range has been created, the current trend is to group different products in a single place, examples of which follow below. □



EQUIPPING TENERIFE AIRPORT

Bollards, light fixtures and benches as part of the expansion of Tenerife North - Ciudad de La Laguna Airport

Located in the municipality of San Cristóbal de La Laguna, Tenerife North - Ciudad de La Laguna Airport is the second biggest on the island in terms of numbers of passengers, the fifth biggest in the Canary Islands and the fourteenth biggest in Spain.

The improvement of the access roads to the airport, completed at the end of last year, included the upgrading of the lighting system with LED technology, thereby ensuring greater efficiency, and the implementation of items of urban furniture such as Kube benches, with and without wooden slats, and fixed stainless steel bollards throughout the complex. □



BANCOS KUBE

AN OASIS OF RECREATION AND REST

Two pieces of recreational equipment, litter bins and benches in a small town in Barcelona

The upgrading of parks and play and rest areas has spread to all parts of the peninsula, including small towns.

A small park has been created In Castellnou del Bages, Barcelona, an area in which children can play while adults rest. Three items of recreational equipment have been installed: a wooden swing, a see-saw and a multi-purpose structure with two slides, in addition to Doria model large-capacity selective collection bins and Citizen benches. □

PINT LINE CHILDREN'S PLAYGROUND
WITH CITIZEN BENCHES AND DORIA LITTER BINS



SAFE FURNITURE IN A SQUARE IN LAVAU, FRANCE

Bicycle racks, fences and safety bollards have been installed, as well as benches, street lamps and fountains, in shades of green in line with the surroundings



KUBE BENCH AND TOMSK LIGHT FIXTURES

OMEGA BICYCLE RACK

Lavaur is a town in the department of Tarn in the French region of Occitania. As part of an operation to clean up one of its squares, a set of street furniture has been installed in a park, featuring benches from the Kube range and Omega bicycle racks, complemented by bollards and St-André fences.

The Kube bench is made of concrete, a solution for

areas subject to extreme temperatures, a characteristic it shares with the steel bicycle rack painted in green.

The facility has been completed with modern Tomsk light fixtures known for their robustness and durability, as well as an individual water fountain.

The overall sturdy appearance of the complex and its simple aesthetics are consistent with the characteristics of the town, famous for its Saint-Alain cathedral. □



KUBE MAD BENCHES AND LETO 2 PLAY STRUCTURE



KUBE MAD BENCHES AND TOMSK SPOTLIGHTS

A COMPLETE PLAYGROUND IN THE TOWN OF ALBAL

A Leto recreational structure is the central element in a square equipped with new lighting and furniture

Various pieces of equipment have been installed in a square in Albal, a town in the province of Valencia, the highlight of which is a children's recreational structure. This is a product from the Leto line, made of sustainable materials such as FSC wood, a rice husk slide and ECO Play panels.

This recreational equipment is ideal for both rural and urban environments. In this case, it has been combined with different light fixtures from the Tomsk series, a column with RGBW Milan spotlights and Kube benches and bins. The latter are made of pre-cast grey concrete with treated tropical wood slats as seats. □





BLUE COLOURED SHADE SAIL AT THE FORMULA 1 TRACK IN CATALONIA

EXPERIENCING FORMULA 1 IN MONTMELÓ

A large sunshade serves as an awning to protect the grandstand from the sun and Pik tables have been installed

The Barcelona-Catalunya Circuit, in Montmeló, opened on 10 September 1991. This is the venue for all motorsport and motorcycling competitions and championships. However, it also offers experiences of all kinds related to driving.

In one of the circuit's grandstands, a series of interconnected sails have been installed to form a large blue awning to protect spectators from the sun. This large area has a view of the entire track and is also visible from outside the circuit.

This infrastructure project was completed with around thirty Pik tables and their respective benches in a covered picnic area. Our Pik table is made of ReBnew, a product manufactured from recycled plastic, which makes it extremely durable and consistent. All this



PIK REBNEW TABLES

equipment was ready for use at the Spanish Formula 1 Grand Prix held between 2 and 4 June this year. □

SPECIAL MARKINGS ON COVERS AND GRILLS

Product innovation is of paramount importance in improving performance

Benito's origins lie in cast iron covers and grilles. These products are essential in street development and have evolved over time. Small innovative ideas that help us to improve our products and to make them more competitive. Special markings for each individual project is one such new development.



For example, the 50 x 30 Benito fence is one of the most replicated on the market, but we need to go one step further and think about the changes taking place, such as climate change and higher levels of rainfall. To this end, the Company's product design team has been redesigning our grilles, adding various anti-slip areas and adapting the slope of the grille to prevent water from flowing

over it and into the drain. Likewise, it has a space that collects water.

Regarding covers, special mention should be made of our composite models, a material that makes them lighter, more resistant and easier to lift. They do not rust or corrode and have no mechanically moving parts, meaning they are quieter. □

FIRE HYDRANTS, THE NEW PRODUCT

Surface and low-level fire hydrants, adaptable to all types of connections

Hydrants are one of the most recent products in the Benito catalogue. Also known as fire hydrants, they are a basic, necessary piece of equipment installed in different urban environments, connected to the mains for the provision of water in the event of a fire. They are located outside buildings and must always be signed appropriately. The nominal diameter, standard number and name of the manufacturer must also be clearly indicated.

Hydrants are mandatory in all buildings with a downward evacuation height greater than 28 metres and an ascending height greater than 6 metres, as well as in buildings with a high occupancy density and a built area of between 2,000 m² and 10,000 m².

All our models adapt to all types of fitting. We produce two models of surface hydrant, a basic model and one equipped with a protective cap. We also supply two underground hydrants, a single and a dual model. □



reBnew

MAINTENANCE-FREE RECYCLED MATERIAL

WE HAVE REUSED MORE THAN
2 100 TONS
OF WASTE FROM THE YELLOW CONTAINER

WE HAVE RECOVERED THE EQUIVALENT OF THE WASTE GENERATED
BY **70.000 SPANIARDS IN ONE YEAR**

TURNING THEM INTO...



3172
CITIZEN ECO
BENCHES

2348
GEA
LITTER BINS



687
PICNIC
TABLES

721
REB
PLANTERS



BENITO

info@benito.com
tel. +34 93 852 1000

IP830

