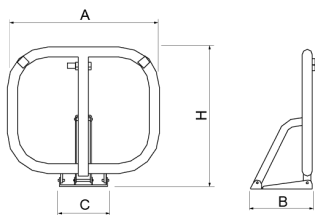
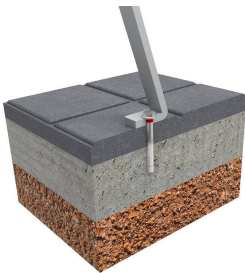




Bollard made of galvanised steel tube treated with Ferrus, a protective process that guarantees high resistance to corrosion. This treatment consists of three layers applied after shot cleaning all impurities: zinc plated, epoxy primer coating and yellow RAL 1021 polyester powder coating.



Ref.	A	B	C	H
H290	610	250	194	545



Recommended anchoring: by means of three expansion bolts.

