



Installation of Milan XL RGBW luminaires in the Sipinen River valley, Kajaani (Finland), a landscape lighting project that enhances the natural environment and improves the nighttime experience.

Kajaani (Finland)



The Monastery of Montserrat, one of Catalonia's most iconic landmarks, features intelligent and sustainable lighting by Benito Urban, combining technology, energy efficiency, and respect for cultural heritage.

Monastery of Montserrat



Castelldefels Castle is presented in all its splendour thanks to the RGB lighting that enhances it at night

Castelldefels



The coloured lighting of the Epizen building in Andorra welcomes visitors

Andorra

BENITO

-Street Lighting

Kajaani (Finland)

Installation of Milan XL RGBW luminaires in the Sipinen River valley, Kajaani (Finland), a landscape lighting project that enhances the natural environment and improves the nighttime experience.



MILAN XXL RGBW
APMXXLR



The landscape lighting project for the Sipinen River valley in Kajaani (Finland) incorporates Milan XXL RGBW luminaires to enhance the natural surroundings and improve the experience of the space at night.

The lighting design, developed by LITE-designs for the city of Kajaani, aims to highlight the river landscape through precise lighting that respects the environment. The luminaires integrate discreetly into the landscape, emphasising the paths and natural elements of the valley without altering its character.

The installation was carried out by contractor Aventi Oy and includes vandal-resistant protection solutions from Tehomet, ensuring durability and resilience in an exposed public space. The architectural control system allows the lighting to be managed efficiently, adapting to the needs of the environment.

The result is an intervention that combines technology, design, and landscape sensitivity to reinforce the nighttime identity of the Sipinen River valley.



V. | The constant improvement and evolution of our products may result in some modifications of the technical specifications and characteristics of the products without prior notice.

BENITO

info@benito.com
tel. 93 852 1000

BENITO

-Street Lighting

Monastery of Montserrat

The Monastery of Montserrat, one of Catalonia's most iconic landmarks, features intelligent and sustainable lighting by Benito Urban, combining technology, energy efficiency, and respect for cultural heritage.



LINEO RGBW
APLR



MILAN XL RGBW
APMXLR



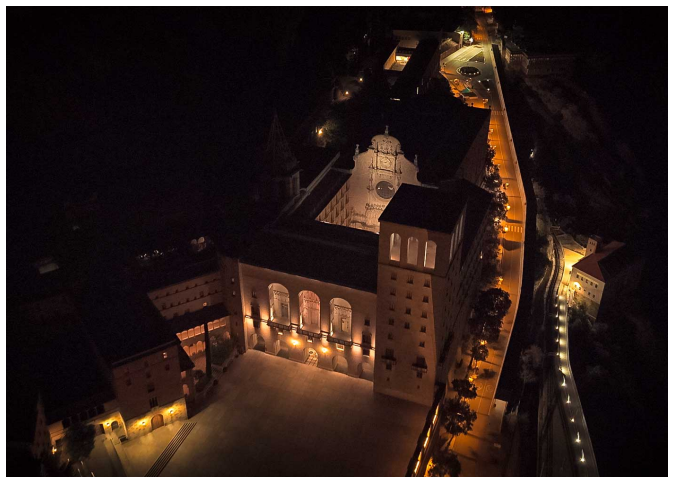
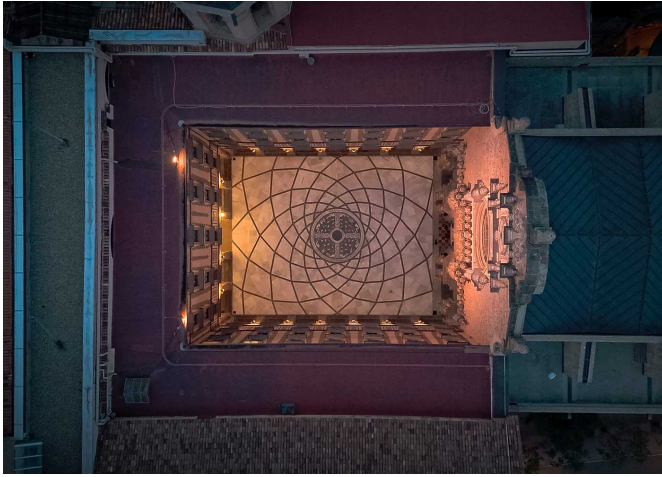
MILAN XXL RGBW
APMXXLR



The **Monastery of Montserrat**, one of Catalonia's most iconic landmarks, now boasts a renewed night-time image thanks to the installation of over **50 LED projectors** and **40 meters of linear luminaires** developed by **Benito Urban**. This cutting-edge system achieves a **40% energy saving**, reducing CO₂ emissions and maintenance costs. Controlled via a **smart app**, the lighting allows adjustment of brightness, colour, and personalized scenes, managing each light point independently.

The project merges **technology, precision, and environmental sensitivity**, enhancing the architecture and spirituality of the site without disturbing its natural balance. The **Milan RGBW, Lineo RGBW, and Ciclo RGBW** models provide dynamic, efficient lighting that respects the historical setting.

Through this project, **Benito Urban** reaffirms its commitment to **technological innovation** applied to cultural heritage, combining **tradition, sustainability, and emotion** in a visually inspiring result.



V. | The constant improvement and evolution of our products may result in some modifications of the technical specifications and characteristics of the products without prior notice.

BENITO

info@benito.com
tel. 93 852 1000

Castelldefels Castle is presented in all its splendour thanks to the RGB lighting that enhances it at night



MILAN XL RGBW
APMXMLR



MILAN XXL RGBW
APMXXLR



This castle, located on the Catalan coast, is a historical and cultural treasure that deserves to be fully appreciated. The technology used to illuminate it with changing colours is a sign of the commitment to preserve and disseminate the cultural heritage of the region. Moreover, a Bluetooth Low Energy remote control system has been implemented, which allows the intensity of the light to be regulated according to the time of day. With this system, greater energy efficiency is achieved, and the lighting can be adapted to the specific needs of the moment. This innovative technology not only improves the aesthetics of the castle, but also contributes to preserving the environment. In short, Castelldefels Castle has become a benchmark in terms of smart and sustainable lighting.

This initiative not only enhances the castle, but also makes it more accessible and attractive to visitors, who can enjoy a unique experience during their night-time visit.



V. | The constant improvement and evolution of our products may result in some modifications of the technical specifications and characteristics of the products without prior notice.

BENITO

info@benito.com
tel. 93 852 1000

BENITO

-Street Lighting

Andorra

The coloured lighting of the Epizen building in Andorra welcomes visitors



MILAN XXL RGBW
APMXXLR

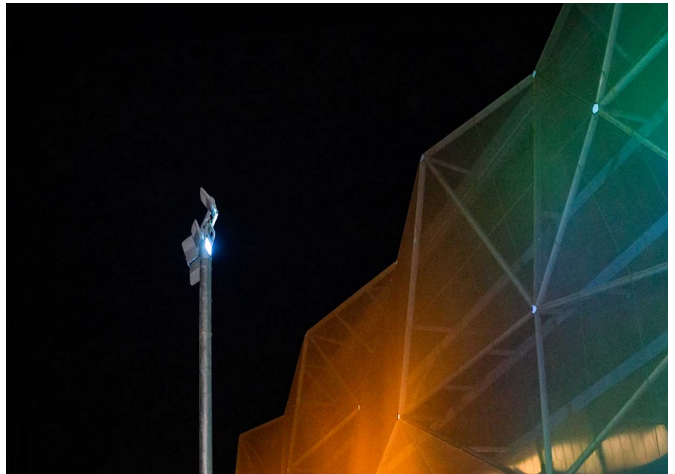
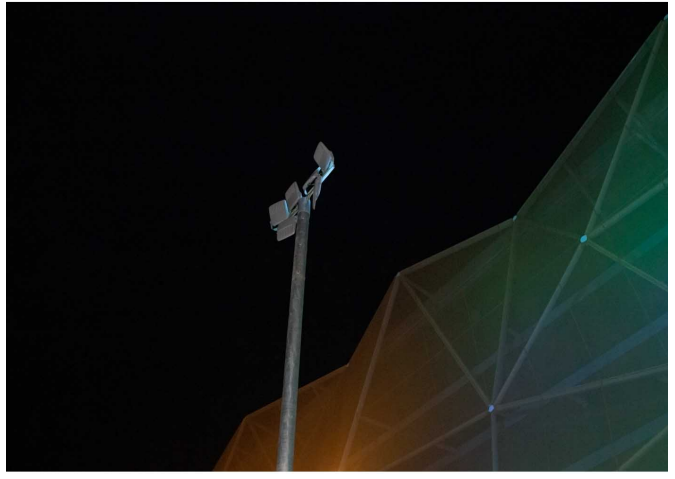


The decorative coloured lighting on the building that houses the Epizen shopping centre in Andorra is one of the examples of possibilities in ornamental lighting. This centre has 60,000 square metres in a building wrapped in metal and fabric structures that simulate crumpled paper. Milan XXL spotlights with RGBW have been installed.

Decorative lighting with LED spotlights does not entail any additional costs and instead gives buildings a more attractive appearance.

BENITO

info@benito.com
tel. 93 852 1000



V. | The constant improvement and evolution of our products may result in some modifications of the technical specifications and characteristics of the products without prior notice.

BENITO

info@benito.com
tel. 93 852 1000