



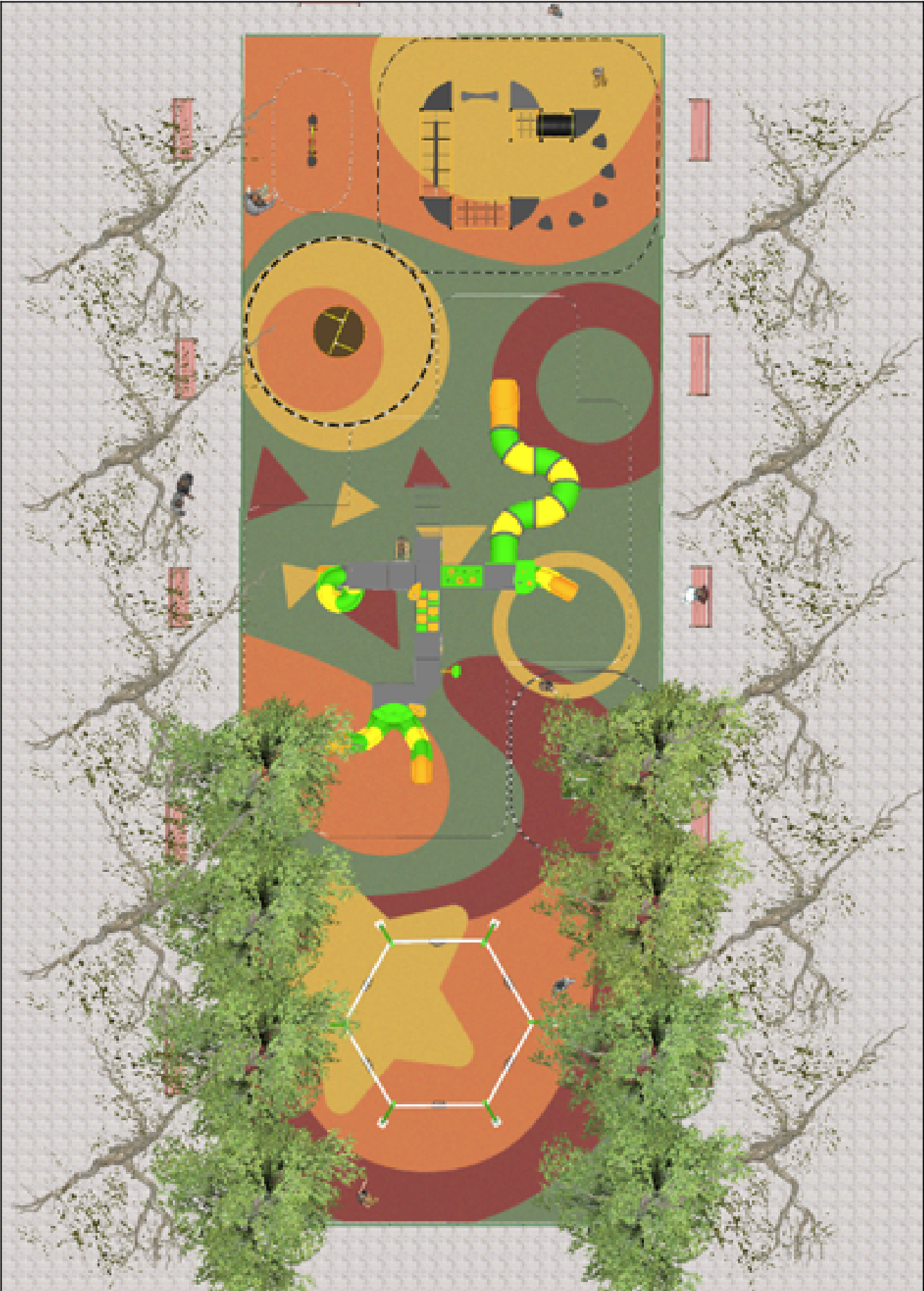
## PROJECT

PROJ-135-2022

Surface: 408 m<sup>2</sup>

Email: [info@benito.com](mailto:info@benito.com)

Telephone: +34 93 852 1000



# BENITO

-Playground Equipment



# BENITO



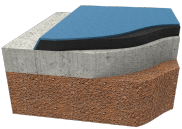


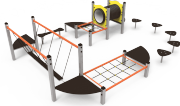

-Playground Equipment



# BENITO

-Playground Equipment



Product	Description
<p>JALU10</p> 	<p><b>Elix</b> The ALU collection <b>maximises playability</b>. Including lots of slides, bridges and dynamic elements, the ALU line encourages children to play, even those with disabilities. Its bright colours don't go unnoticed and the quality of materials guarantee high durability.</p> <p><a href="#">Data Sheet</a></p>
<p>JC05</p> 	<p><b>Sputnik</b> <b>Structure, Metal:</b> hot dip galvanised and powder-coated rotating shaft. Colours: JC05 - RAL6018, RAL1028 / JC05B - RAL2008, RAL1028.</p> <p><a href="#">Data Sheet</a> <a href="#">Certificate</a> <a href="#">Certificate Conformity</a></p>
<p>JCC</p> 	<p><b>Continuous Rubber</b> Anti-slip, non-toxic, ecological RECYCLED AND RECYCLABLE quality rubber. Continuous rubber pavements made of high quality materials according to the EN-1177 European security standard.</p> <p><a href="#">Data Sheet</a></p>
<p>JFS14</p> 	<p><b>Gus</b> Fun and educative spring swing for children. Made of resistant materials according to the EN1176 standard.</p> <p><a href="#">Data Sheet</a> <a href="#">Certificate</a></p>
<p>JL2060000</p> 	<p><b>Hexa Crome</b> Swings for children made of different materials such as wood and steel. Resistant to abrasion, corrosion and bad weather conditions.</p> <p><a href="#">Data Sheet</a> <a href="#">Certificate</a> <a href="#">Certificate Conformity</a></p>
<p>JPV413</p> 	<p><b>Loop 4</b> <b>Structure, Metal:</b> hot-dip galvanised and powder coated 80x80x2mm posts resistant to abrasion, corrosion and bad weather conditions. 2mm thick AISI 304 polished stainless steel slide surface curved and molded in one piece. Ø32mm protective bars made of AISI 304 stainless steel.</p> <p><a href="#">Data Sheet</a> <a href="#">Acreditative Letter</a> <a href="#">Certificate Conformity</a></p>
<p>JROK02</p> 	<p><b>Roko 2</b> Bouldering is a form of climbing that consists of climbing small walls, without the need for protective materials such as ropes or harnesses. With the ROKO modular elements we managed to turn this sport into a game and bring it to urban spaces. This line, characterised by its giant geometric shapes, is produced with high-quality materials that provide socialisation and climbing spaces for older children and teenagers. A game option with different levels of height to find different challenges depending on one's skills.</p> <p><a href="#">Data Sheet</a> <a href="#">Certificate</a></p>