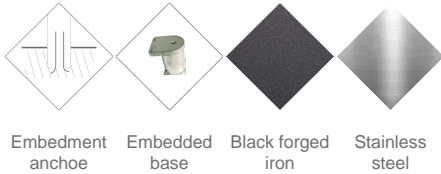




H214F
Pilon

HOSPITALET DURABLE



Embedment anchoe Embedded base Black forged iron Stainless steel

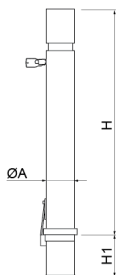
Regulations and certifications:



Durable Hospitalet-style bollard, manufactured from high-impact resistant Composites, is 100% recyclable and offers excellent durability even under heavy use. It features a stainless steel top ring, which reinforces its strength and provides a higher-quality finish. The satin black wrought iron finish is ideal for integration into diverse urban environments. It exhibits high corrosion resistance, with no risk of rust, guaranteeing optimal performance in humid or saline environments. Thanks to these properties, it significantly reduces long-term maintenance costs, making it a particularly suitable solution for replacements and areas with recurring impacts. Recommended anchoring: recessed base.

Materials & Finishes:

Stainless steel: Structural alloy with a high chromium and nickel content, resistant to corrosion. High resistance to weather, humidity, UV rays and chemical agents present in urban environments. Thanks to the natural formation of a protective passive layer, stainless steel does not require additional coatings, ensuring excellent durability, low maintenance and a clean, timeless appearance – even under demanding conditions such as coastal or industrial areas.



Ref.	Ø A	H	Wt
H214F	3.74"	39.37"	6 Lbs
H214FM/1C	3.74"	39.37"	14 Lbs

Hospitalet Durable Mobile
H214FM



BENITO

info@benito.com
tel. 93 852 1000

Pilon HOSPITALET DURABLE

H214F

Downloads: [Project sheet](#) | [CAD](#) |



BENITO

info@benito.com
tel. 93 852 1000