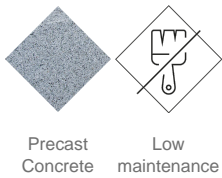


H372
Bollard
Kube



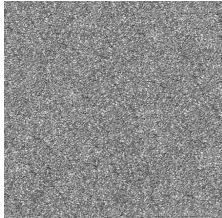
Regulations and certifications:



Kube design bollard, made of rough, granite-gray precast concrete. It rests on a prepared surface under its own weight.

Materials & Finishes:

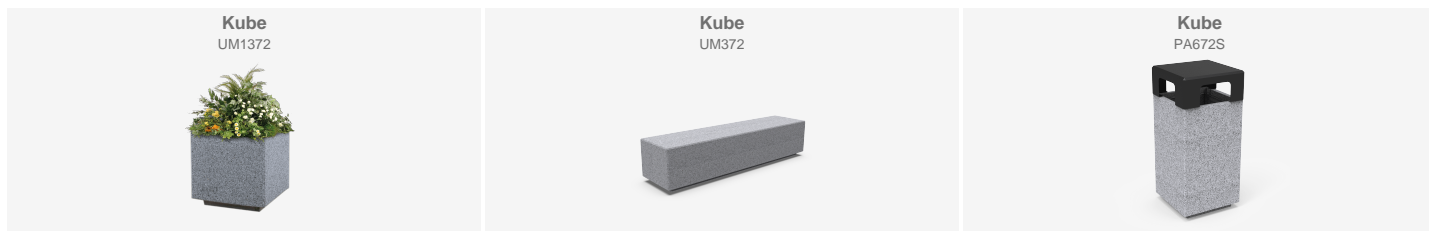
Concrete: Reinforced concrete with a pickled and water-repellent finish. Manufactured with cement, sand, and gravel embedded within a metal structure. Shot blasting results in a high-quality, durable texture.



Gray



Ref.	A	B	H	H1	Wt
H372	4.72"	4.72"	39.37"	7.87"	66 Lbs



Downloads: [Maintenance guide](#) | [Project sheet](#) | [CAD](#) | [Mounting instructions](#) |