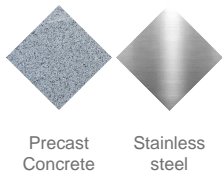
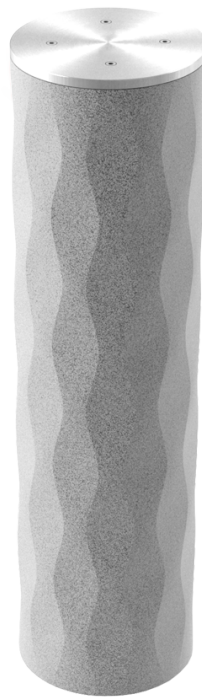


H374  
**Bollard**  
**Petrus**

By BRC Design © © BENITO



Regulations and certifications:



**Petrus designer bollard, made of precast reinforced concrete with a finely etched finish, designed to permanently prevent vehicle entry. Finished with brushed stainless steel sheeting.**

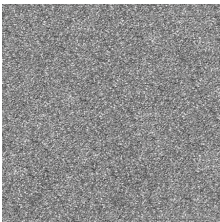
**Optional: WITH LED light crown, for maximum visibility thanks to its red/green LED crown, traffic light function.**

**Recommended anchoring, with chemical anchor, using three bolts screwed into the base of the bollard.**

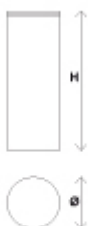
Materials & Finishes:

**Stainless steel:** Structural alloy with a high chromium and nickel content, resistant to corrosion. High resistance to weather, humidity, UV rays and chemical agents present in urban environments. Thanks to the natural formation of a protective passive layer, stainless steel does not require additional coatings, ensuring excellent durability, low maintenance and a clean, timeless appearance – even under demanding conditions such as coastal or industrial areas.

**Concrete:** Reinforced concrete with a pickled and water-repellent finish. Manufactured with cement, sand, and gravel embedded within a metal structure. Shot blasting results in a high-quality, durable texture.



Gray



Ref	Ø	H	Wt
H374L	8.66 in	800mm	161 Lbs
H374	8.66 in	800mm	161 Lbs



Downloads: [Project sheet](#) |

