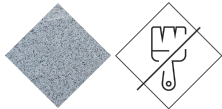




UM1673

Planter

Kube Nin



Precast
Concrete

Low
maintenance

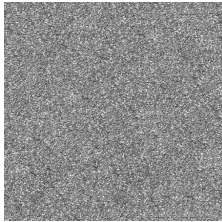
Regulations and certifications:



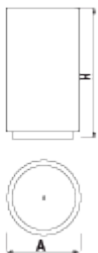
NIN designer Planter , total dimensions (Ø x H)19.69x38.58 in, made of granite-white precast concrete. It rests on a prepared surface under its own weight.

Materials & Finishes:

Concrete: Reinforced concrete with a pickled and water-repellent finish. Manufactured with cement, sand, and gravel embedded within a metal structure. Shot blasting results in a high-quality, durable texture.



Gray



Ref.	A	B	H	Wt
UM1372	22.83"	22.83"	22.83"	353 Lbs
UM1373	19.69"	19.69"	38.58"	419 Lbs
UM1673	19.69"	19.69"	34.65"	419 Lbs



BENITO

info@benito.com
tel. 93 852 1000

Downloads: [Project sheet](#) | [BIM](#)