

Optimal signaling system for determining the location and entry of pedestrian crossings, as well as speed bumps manufactured on site (concrete or asphalt).

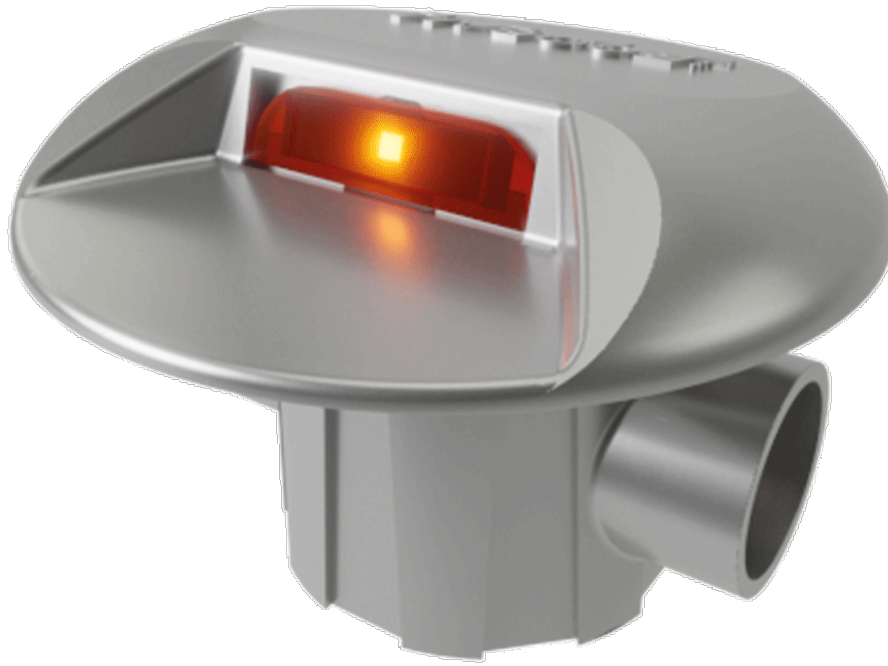
Increases the driver's level of attention.

They can form transverse lines indicating the need to reduce speed, reinforcing the lines formed by the rough bands.

Increases the driver's attention in advance of the point of danger.

They act as reinforcements for arrest lines at particularly dangerous points.

[HD image](#)



V. 2025-12-04 | The constant improvement and evolution of our products may result in some modifications of the technical specifications and characteristics of the products without prior notice.