

BENITO

-Street Lighting



Project

PROJ-045-2022

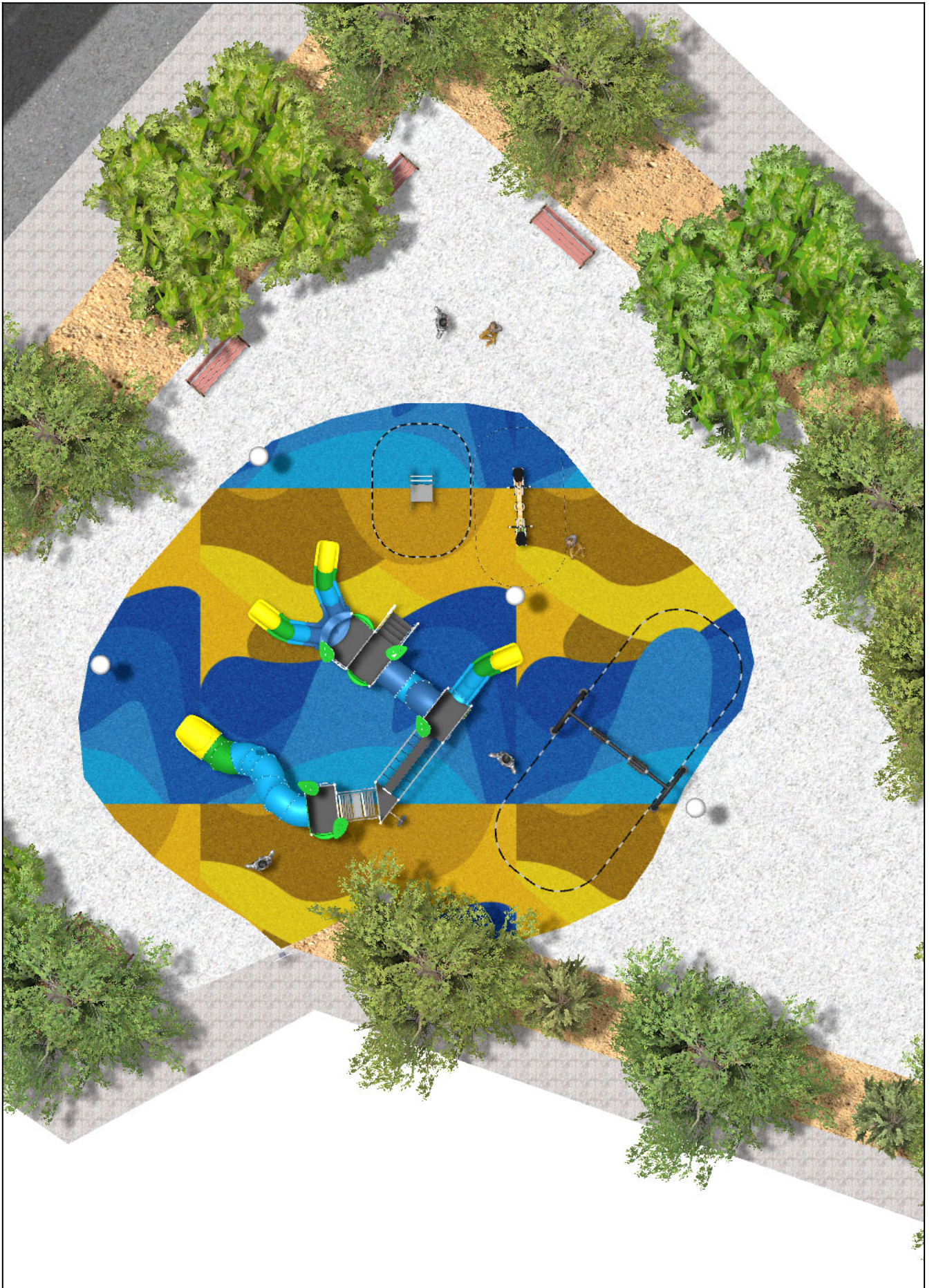
Surface: 160 m²

Email: info@benito.com

Telephone: +34 93 852 1000

BENITO

-Street Lighting



BENITO


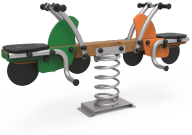



-Street Lighting



BENITO

-Street Lighting



Product	Description
<p>ILCZ</p> 	<p>Citizen Clear Decorative or functional luminaire ideal for residential areas (green spaces, pedestrian areas, parks...). Extensive optical and light distributions, glare control and cut-off suitable for pedestrians. Excellent relation between efficiency and cost.</p> <p>Data Sheet ILCZ</p>
<p>JFS10</p> 	<p>Rider Fun and educative see-saw for children. Made of resistant materials according to the EN1176 standard.</p> <p>Data Sheet Certificate Certificate Conformity</p>
<p>JJMM03</p> 	<p>Julián Designed by Javier Mariscal. Half-artist half-designer, his childlike strokes and Latin aesthetic combine perfectly with this kind of product.</p> <p>Data Sheet Certificate Certificate Conformity</p>
<p>JKSP11000</p> 	<p>Curvo Mixto Swings for children made of different materials such as wood and steel. Resistant to abrasion, corrosion and bad weather conditions.</p> <p>Data Sheet Certificate Certificate Conformity</p>
<p>UM301</p> 	<p>Citizen Exclusive CITIZEN design Bench , total dimensions (length x height x depth) 1800x820x650 mm, manufactured with ductile iron legs (treated with the Ferrus process, the triple-layer protector for iron, which guarantees optimal corrosion resistance). Epoxy primer finish and Marson-colored polyester powder paint. Five tropical wood planks (treated with a triple-layer Lignus coating, a fungicidal, insecticidal and water-repellent protector) in a natural finish. Stainless steel hardware. Recommended anchoring: four M10 expansion bolts depending on the surface and project. Optional items not included: Customizable marking with 74x35 mm aluminum plate or milled board.</p> <p>Data Sheet UM301 Data Sheet Certificate TMA/851/2021</p>